


| | | |
|--|------------------------|---|
| WAAS CH 53422 W09A | APP CRS 093° | Rwy Idg 8002 TDZE 8 Apt Elev 8 |
|--|------------------------|---|

RNAV (GPS) RWY 9L

MIAMI-OPA LOCKA EXEC (OPF)

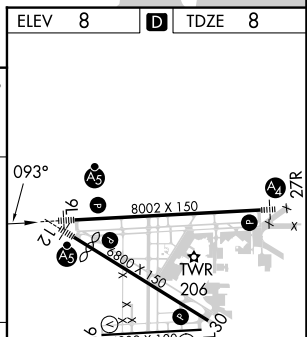
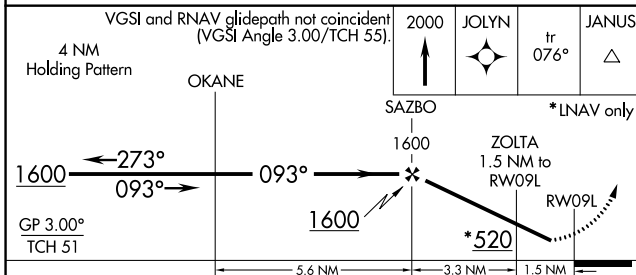
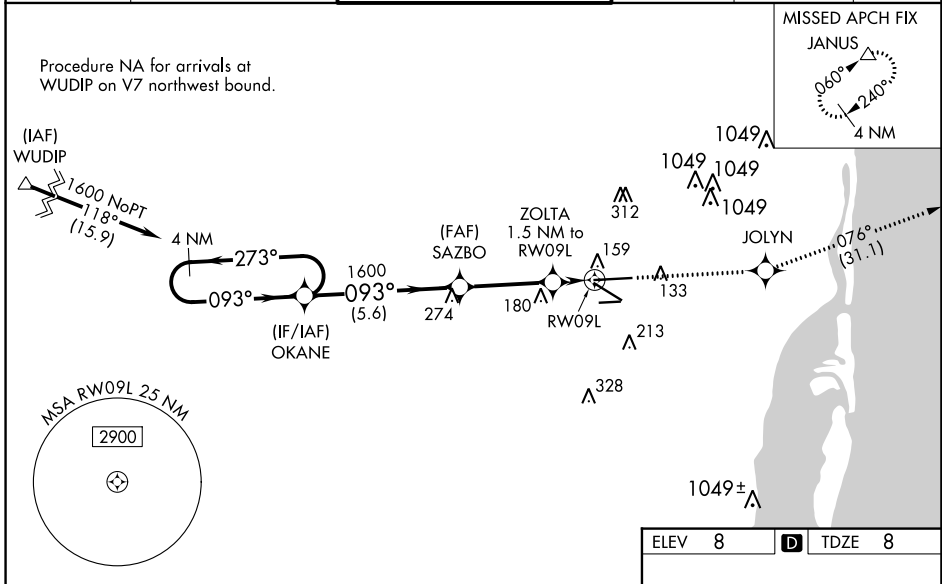
⚠ Baro-VNAV NA when using Miami Intl altimeter setting. For uncompensated Baro-VNAV systems, LNAV/VNAV NA below -15°C (5°F) or above 43°C (109°F). DME/DME RNP-0.3 NA. Helicopter visibility reduction below 3/4 SM NA. When local altimeter setting not received, use Miami Intl altimeter setting and increase all DA/MDA 20 feet and Circling Cat D visibility 1/4 SM. For inop MALSRL, increase LNAV/VNAV all Cats visibility to 1 mile, LNAV Cats A and B visibility to 1 mile and Cats C and D visibility to 1 1/2 miles. For inop MALSRL, when using Miami Intl altimeter setting, increase LPV all Cats visibility to 3/8 mile, LNAV/VNAV all Cats visibility to 1 1/2 miles and LNAV Cats A and B visibility to 1 mile. Inop table does not apply to LPV all Cats. Caution: Lights on highway 0.7 NM north may be mistaken for runway.

MALSRL



MISSED APPROACH:
Climb to 2000 direct JOLYN and on track 076° to JANUS and hold.

| | | | | | |
|----------------------|---------------------------------------|--|---------------------------|--------------------------|----------------------|
| ATIS 125.9 | MIAMI APP CON 128.6 306.975 | OPA LOCKA TOWER * 134.675 (CTAF) 0 | GND CON 120.025 | CLNC DEL 119.2 | GCO 119.45 |
|----------------------|---------------------------------------|--|---------------------------|--------------------------|----------------------|



| CATEGORY | A | B | C | D |
|--------------|-------|-------------|------------------------------|------------------------------|
| LPV DA | | 258-3/4 | 250 (300-3/4) | |
| LNAV/VNAV DA | | 321-3/4 | 313 (400-3/4) | |
| LNAV MDA | | 420-3/4 | 412 (500-3/4) | |
| CIRCLING | 540-1 | 532 (600-1) | 620-1 3/4 612 (700-1 3/4) | 740-2 1/4 732 (800-2 1/4) |

MIRL Rwy 9R-27L
HIRL Rws 9L-27R and 12-30 0