

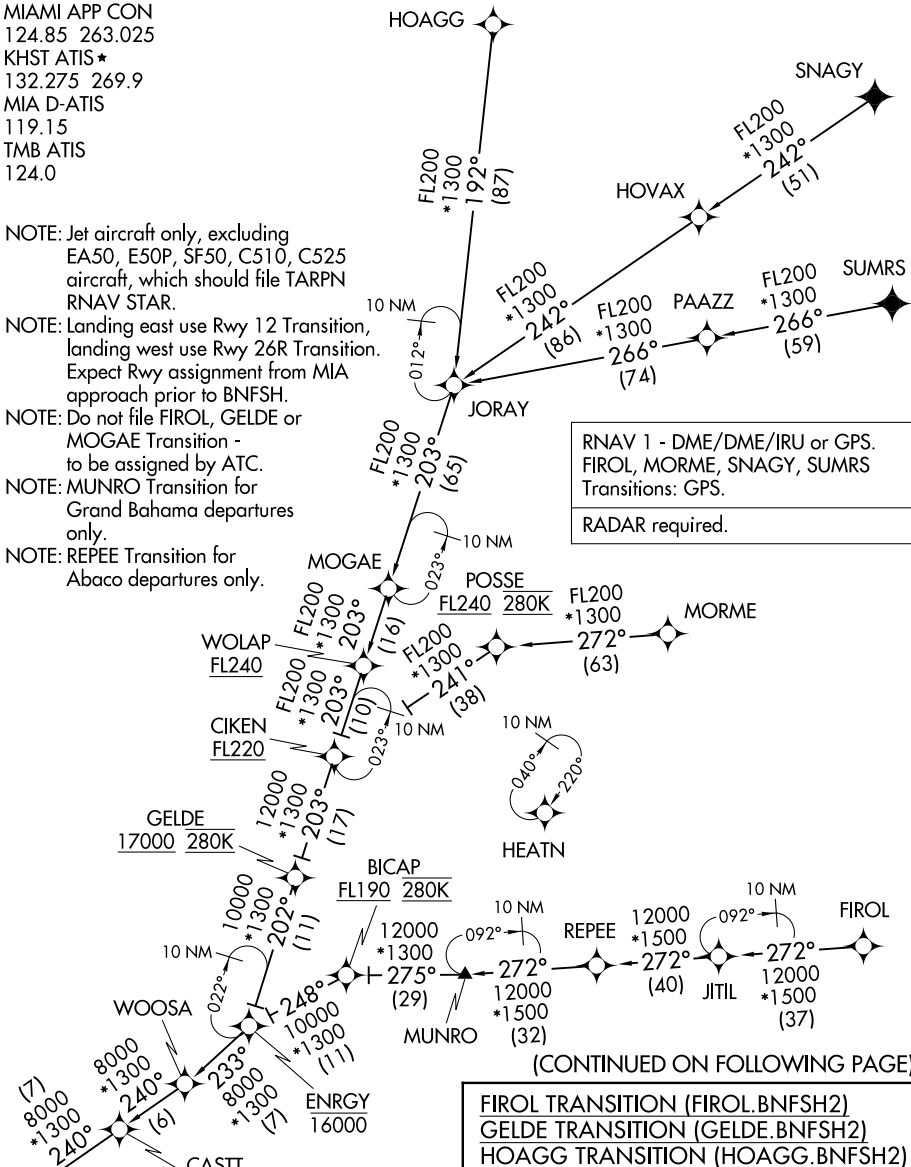
BNFSH TWO ARRIVAL(RNAV) Transition Routes

MIAMI, FLORIDA

MIAMI APP CON
 124.85 263.025
 KHST ATIS*
 132.275 269.9
 MIA D-ATIS
 119.15
 TMB ATIS
 124.0

- NOTE: Jet aircraft only, excluding EA50, E50P, SF50, C510, C525 aircraft, which should file TARPN RNAV STAR.
- NOTE: Landing east use Rwy 12 Transition, landing west use Rwy 26R Transition. Expect Rwy assignment from MIA approach prior to BNFSH.
- NOTE: Do not file FIROL, GELDE or MOGAE Transition - to be assigned by ATC.
- NOTE: MUNRO Transition for Grand Bahama departures only.
- NOTE: REPEE Transition for Abaco departures only.

RNAV 1 - DME/DME/IRU or GPS.
 FIROL, MORME, SNAGY, SUMRS
 Transitions: GPS.
 RADAR required.



(CONTINUED ON FOLLOWING PAGE)

- FIROL TRANSITION (FIROL.BNFSH2)
- GELDE TRANSITION (GELDE.BNFSH2)
- HOAGG TRANSITION (HOAGG.BNFSH2)
- MOGAE TRANSITION (MOGAE.BNFSH2)
- MORME TRANSITION (MORME.BNFSH2)
- MUNRO TRANSITION (MUNRO.BNFSH2)
- REPEE TRANSITION (REPEE.BNFSH2)
- SNAGY TRANSITION (SNAGY.BNFSH2)
- SUMRS TRANSITION (SUMRS.BNFSH2)

BNFSH
 11000
 See following page
 for arrival routes.

NOTE: Chart not to scale.

SE-3, 28 NOV 2024 to 26 DEC 2024

SE-3, 28 NOV 2024 to 26 DEC 2024

BNFSH TWO ARRIVAL(RNAV) Transition Routes

MIAMI, FLORIDA

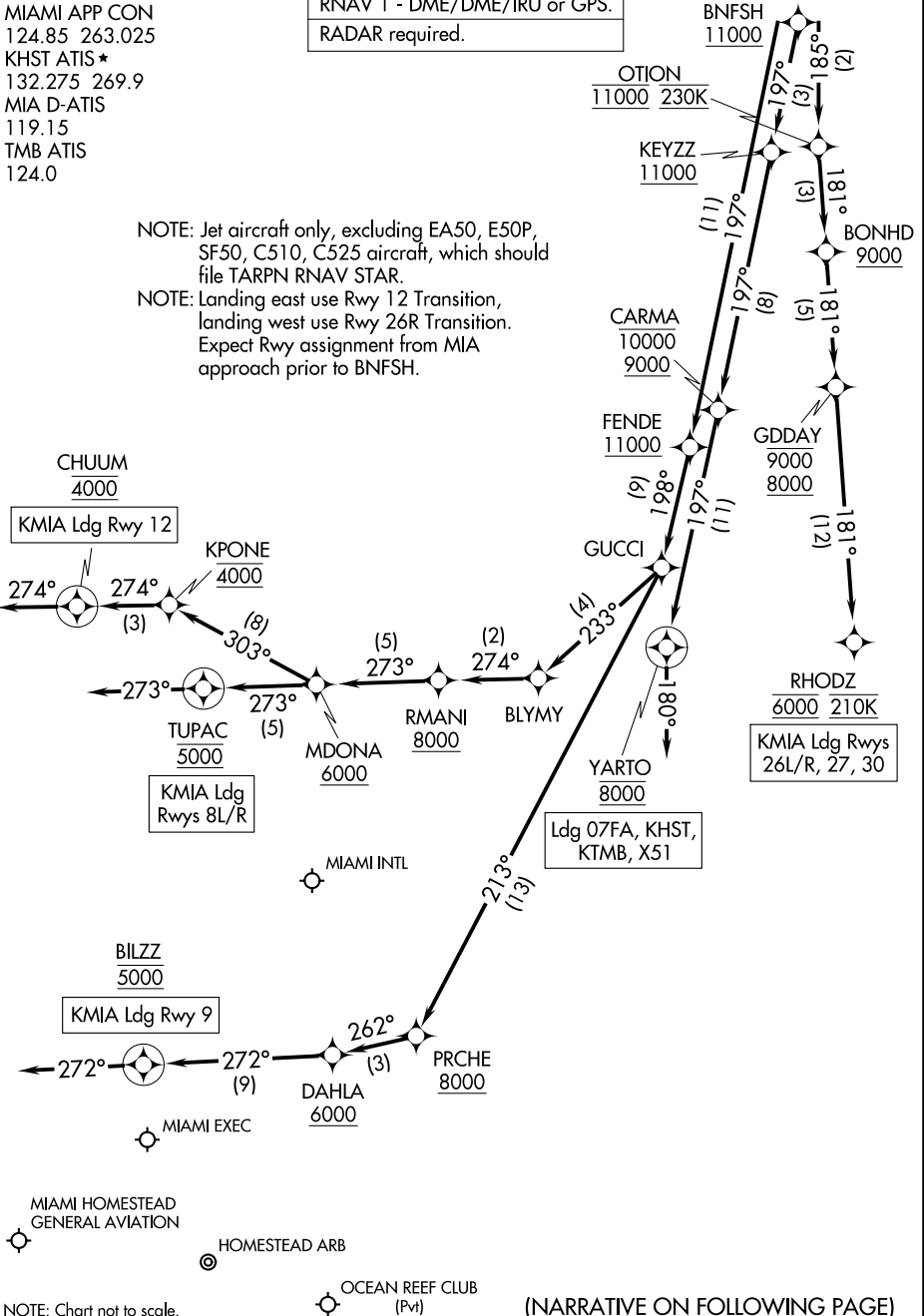
BNFSH TWO ARRIVAL(RNAV) Arrival Routes

MIAMI, FLORIDA

MIAMI APP CON
 124.85 263.025
 KHST ATIS *
 132.275 269.9
 MIA D-ATIS
 119.15
 TMB ATIS
 124.0

RNAV 1 - DME/DME/IRU or GPS.
 RADAR required.

NOTE: Jet aircraft only, excluding EA50, E50P, SF50, C510, C525 aircraft, which should file TARPEN RNAV STAR.
 NOTE: Landing east use Rwy 12 Transition, landing west use Rwy 26R Transition. Expect Rwy assignment from MIA approach prior to BNFSH.



SE-3, 28 NOV 2024 to 26 DEC 2024

SE-3, 28 NOV 2024 to 26 DEC 2024

NOTE: Chart not to scale.

(NARRATIVE ON FOLLOWING PAGE)

BNFSH TWO ARRIVAL(RNAV) Arrival Routes

MIAMI, FLORIDA

ARRIVAL ROUTE DESCRIPTION

LANDING KMIA RUNWAYS 8L/R: From BNFSH on track 197° to cross FENDE at or above 11000, then on track 198° to GUCCI, then on track 233° to BLYMY, then on track 274° to cross RMANI at or above 8000, then on track 273° to cross MDONA at or above 6000, then on track 273° to cross TUPAC at 5000, then on track 273°. Expect RADAR vectors to final approach course.

LANDING KMIA RUNWAY 9: From BNFSH on track 197° to cross FENDE at or above 11000, then on track 198° to GUCCI, then on track 213° to cross PRCHE at or above 8000, then on track 262° to cross DAHLA at or above 6000, then on track 272° to cross BILZZ at 5000, then on track 272°. Expect RADAR vectors to final approach course.

LANDING KMIA RUNWAY 12: From BNFSH on track 197° to cross FENDE at or above 11000, then on track 198° to GUCCI, then on track 233° to BLYMY, then on track 274° to cross RMANI at or above 8000, then on track 273° to cross MDONA at or above 6000, then on track 303° to cross KPONE at 4000, then on track 274° to cross CHUUM at 4000, then on track 274°. Expect RADAR vectors to final approach course.

LANDING KMIA RUNWAYS 26L/R, 27, 30: From BNFSH on track 185° to cross OTION at 11000 and at 230K, then on track 181° to cross BONHD at or above 9000, then on track 181° to cross GDDAY between 8000 and 9000, then on track 181° to cross RHODZ at 6000 and at 210K. Expect ILS or LOC Rwy 26L, Rwy 26R, or RADAR vectors Rwy 27, Rwy 30 approach.

LANDING 07FA/X51/KHST/KTMB: From BNFSH on track 197° to cross KEYZZ at or above 11000, then on track 197° to cross CARMA between 9000 and 10000, then on track 197° to cross YARTO at 8000, then on heading 180° or as assigned by ATC. Expect RADAR vectors to final approach course.