

FOI ZZ THREE DEPARTURE (RNAV) Departure Routes
(FOI ZZ3.FOI ZZ) 21 MAR 24
MIAMI, FLORIDA
MIAMI INTL (MIA)

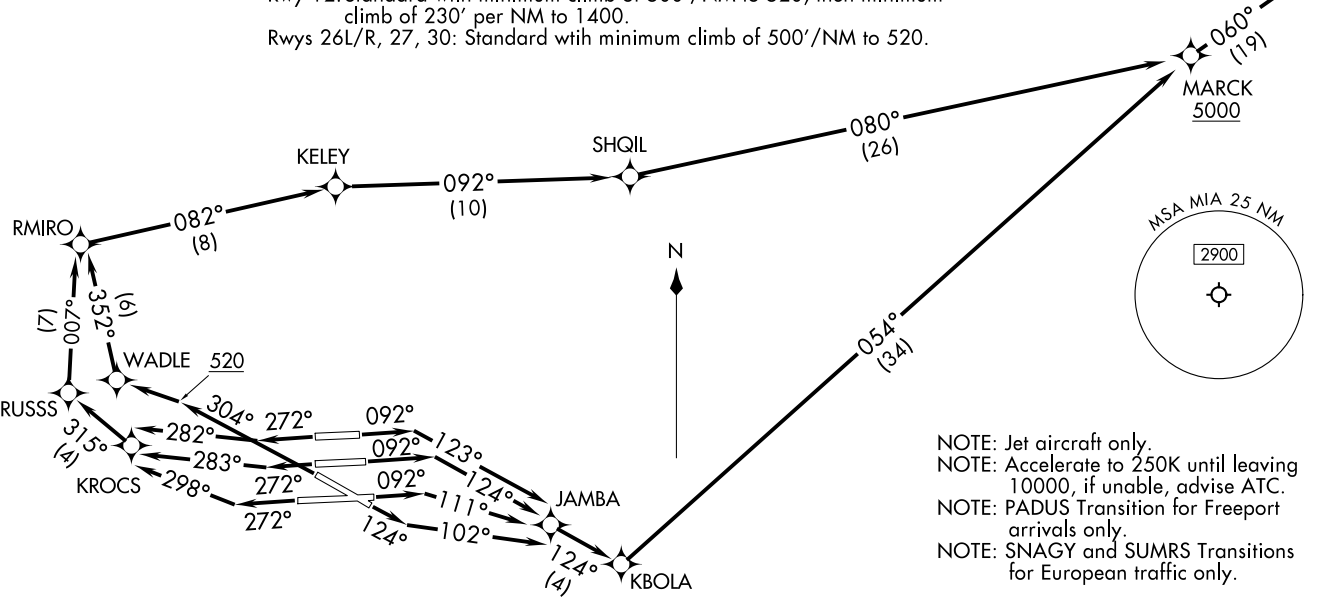
MIAMI DEP CON
119.45 290.325
D-ATIS
133.675
CLNC DEL
135.35
CPDLC
GND CON
(Rwys 8L/R, 12, 26L/R)
121.8 348.6
(Rwys 9, 27, 30)
127.5 348.6
MIAMI TOWER
118.3 256.9

**TOP ALTITUDE:
5000**

RNAV-1 DME/DME/IRU or GPS.
SNAGY and SUMRS Transitions: RNAV 1-GPS.
RADAR required.

TAKEOFF MINIMUMS
Rwy 8L: Standard with minimum climb of 500'/NM to 520, then minimum climb of 215' per NM to 1400.
Rwy 8R: Standard with minimum climb of 500'/NM to 520, then minimum climb of 235' per NM to 1400.
Rwy 9: Standard with minimum climb of 500'/NM to 520, then minimum climb of 240' per NM to 1400.
Rwy 12: Standard with minimum climb of 500'/NM to 520, then minimum climb of 230' per NM to 1400.
Rwys 26L/R, 27, 30: Standard with minimum climb of 500'/NM to 520.

See following page for transition routes.
FOI ZZ



NOTE: Chart not to scale.

NOTE: Jet aircraft only.
NOTE: Accelerate to 250K until leaving 10000, if unable, advise ATC.
NOTE: PADUS Transition for Freeport arrivals only.
NOTE: SNAGY and SUMRS Transitions for European traffic only.

(CONTINUED ON FOLLOWING PAGE)

(FOI ZZ3.FOI ZZ) 24081
FOI ZZ THREE DEPARTURE (RNAV) Departure Routes
AL-257 (FAA)
MIAMI INTL (MIA)
MIAMI, FLORIDA

(FOLZZ3.FOLZZ) 24081

AL-257 (FAA)

MIAMI INTL (MIA)
MIAMI, FLORIDA

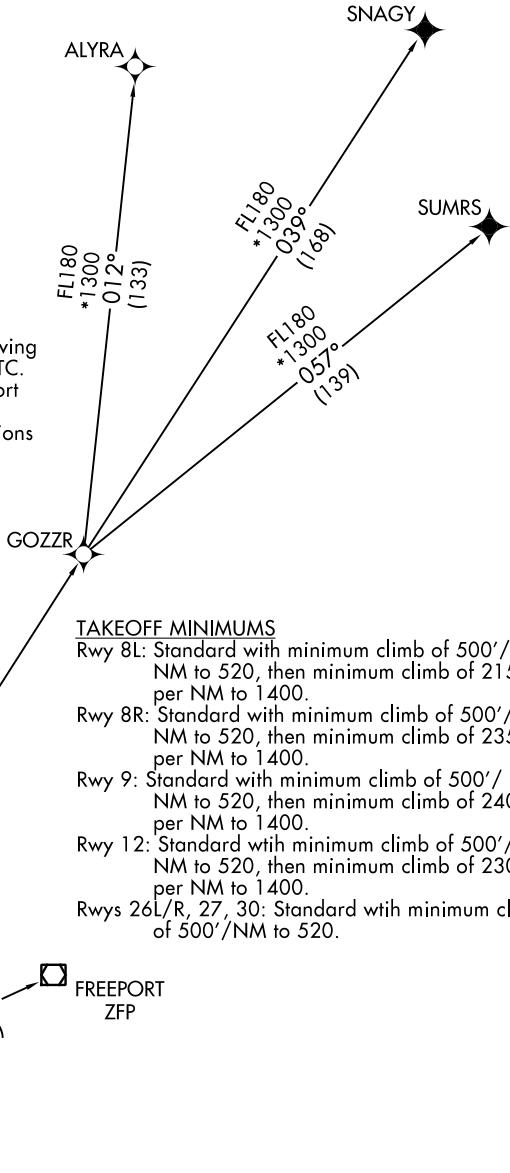
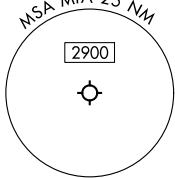
FOLZZ THREE DEPARTURE (RNAV) Transition Routes

MIAMI DEP CON
119.45 290.325
D-ATIS
133.675
CLNC DEL
135.35
CPDLC
GND CON
(Rwys 8L/R, 12, 26L/R)
121.8 348.6
(Rwys 9, 27, 30)
127.5 348.6
MIAMI TOWER
118.3 256.9

**TOP ALTITUDE:
5000**

RNAV-1 DME/DME/IRU or GPS.
SNAGY and SUMRS Transitions: RNAV 1-GPS.
RADAR required.

- NOTE: Jet aircraft only.
- NOTE: Accelerate to 250K until leaving 10000, if unable, advise ATC.
- NOTE: PADUS Transition for Freeport arrivals only.
- NOTE: SNAGY and SUMRS Transitions for European traffic only.



TAKEOFF MINIMUMS

- Rwy 8L: Standard with minimum climb of 500'/NM to 520, then minimum climb of 215' per NM to 1400.
- Rwy 8R: Standard with minimum climb of 500'/NM to 520, then minimum climb of 235' per NM to 1400.
- Rwy 9: Standard with minimum climb of 500'/NM to 520, then minimum climb of 240' per NM to 1400.
- Rwy 12: Standard with minimum climb of 500'/NM to 520, then minimum climb of 230' per NM to 1400.
- Rwys 26L/R, 27, 30: Standard with minimum climb of 500'/NM to 520.

(CONTINUED ON FOLLOWING PAGE)

NOTE: Chart not to scale.

FOLZZ THREE DEPARTURE (RNAV) Transition Routes
(FOLZZ3.FOLZZ) 21/MAR/24

MIAMI, FLORIDA
MIAMI INTL (MIA)

SE-3, 28 NOV 2024 to 26 DEC 2024

SE-3, 28 NOV 2024 to 26 DEC 2024

FOLZZ THREE DEPARTURE (RNAV)



DEPARTURE ROUTE DESCRIPTION

SEE ADDITIONAL REQUIREMENTS ON AAUP

TAKEOFF RUNWAY 8L: Climb on heading 092° to intercept course 123° to JAMBA, then on track 124° to KBOLA, then on track 054° to cross MARCK at or above 5000, thence. . .

TAKEOFF RUNWAY 8R: Climb on heading 092° to intercept course 124° to JAMBA, then on track 124° to KBOLA, then on track 054° to cross MARCK at or above 5000, thence. . .

TAKEOFF RUNWAY 9: Climb on heading 092° to intercept course 111° to JAMBA, then on track 124° to KBOLA, then on track 054° to cross MARCK at or above 5000, thence. . .

TAKEOFF RUNWAY 12: Climb on heading 124° to intercept course 102° to JAMBA, then on track 124° to KBOLA, then on track 054° to cross MARCK at or above 5000, thence. . .

TAKEOFF RUNWAY 26L: Climb on heading 272° to intercept course 283° to KROCS, then on track 315° to RUSSS, then on track 007° to RMIRO, then on track 082° to KELEY, then on track 092° to SHQIL, then on track 080° to cross MARCK at or above 5000, thence. . .

TAKEOFF RUNWAY 26R: Climb on heading 272° to intercept course 282° to KROCS, then on track 315° to RUSSS, then on track 007° to RMIRO, then on track 082° to KELEY, then on track 092° to SHQIL, then on track 080° to cross MARCK at or above 5000, thence. . .

TAKEOFF RUNWAY 27: Climb on heading 272° to intercept course 298° to KROCS, then on track 315° to RUSSS, then on track 007° to RMIRO, then on track 082° to KELEY, then on track 092° to SHQIL, then on track 080° to cross MARCK at or above 5000, thence. . .

TAKEOFF RUNWAY 30: Climb on heading 304° to 520, then direct WADLE, then on track 352° to RMIRO, then on track 082° to KELEY, then on track 092° to SHQIL, then on track 080° to cross MARCK at or above 5000, thence. . .

. . . on track 060° to FOLZZ, then on assigned transition, maintain 5000. Expect clearance to filed altitude within 10 minutes after departure.

ALYRA TRANSITION (FOLZZ3.ALYRA)

FREEMONT TRANSITION (FOLZZ3.ZFP)

GOZZR TRANSITION (FOLZZ3.GOZZR)

PADUS TRANSITION (FOLZZ3.PADUS)

SNAGY TRANSITION (FOLZZ3.SNAGY)

SUMRS TRANSITION (FOLZZ3.SUMRS)

SE-3, 28 NOV 2024 to 26 DEC 2024

SE-3, 28 NOV 2024 to 26 DEC 2024