

GLADZ FOUR DEPARTURE (RNAV) (GLADZ4.GLADZ) 31OCT24

GLADZ FOUR DEPARTURE (RNAV) Departure Routes

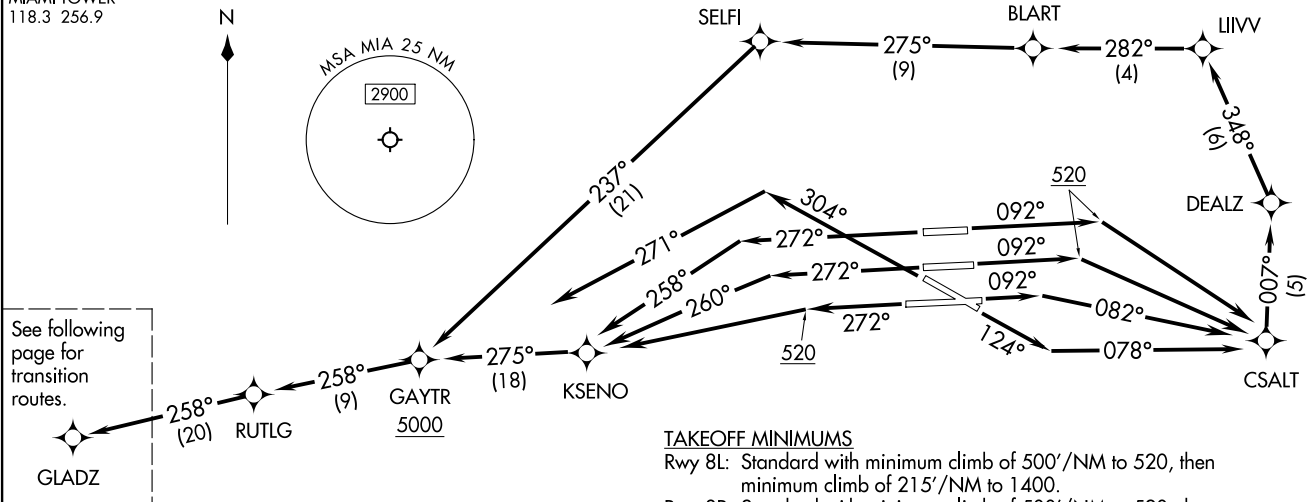
MIAMI, FLORIDA  
MIAMI INTL (MIA)

MIAMI DEP CON  
125.5 354.1 (Departing West)  
119.45 290.325 (Departing East)  
D-ATIS  
133.675  
CLNC DEL  
135.35  
CPDLC  
GND CON  
(Rwys 8L/R, 12, 26L/R) 121.8 348.6  
(Rwys 9, 27, 30) 127.5 348.6  
MIAMI TOWER  
118.3 256.9

**TOP ALTITUDE:  
5000**

RNAV-1 DME/DME/IRU or GPS.  
RADAR required for NON-GPS equipped aircraft.  
RADAR required.

NOTE: Jet aircraft only.  
NOTE: Accelerate to 250K until leaving 10000, if unable, advise ATC.  
NOTE: SHAAQQ and BAGGS transitions ATC assigned except aircraft departing MIA.



**TAKEOFF MINIMUMS**

- Rwy 8L: Standard with minimum climb of 500'/NM to 520, then minimum climb of 215'/NM to 1400.
- Rwy 8R: Standard with minimum climb of 500'/NM to 520, then minimum climb of 235'/NM to 1400.
- Rwy 9: Standard with minimum climb of 500'/NM to 520, then minimum climb of 240'/NM to 1400.
- Rwy 12: Standard with minimum climb of 500'/NM to 520, then minimum climb of 230'/NM to 1400.
- Rwys 26L/R, 27, 30: Standard with minimum climb of 500'/NM to 520.

NOTE: Chart not to scale.

(CONTINUED ON FOLLOWING PAGE)

(GLADZ4.GLADZ) 24305

AL-257 (FAA)  
Departure Routes

MIAMI INTL (MIA)  
MIAMI, FLORIDA

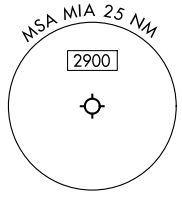
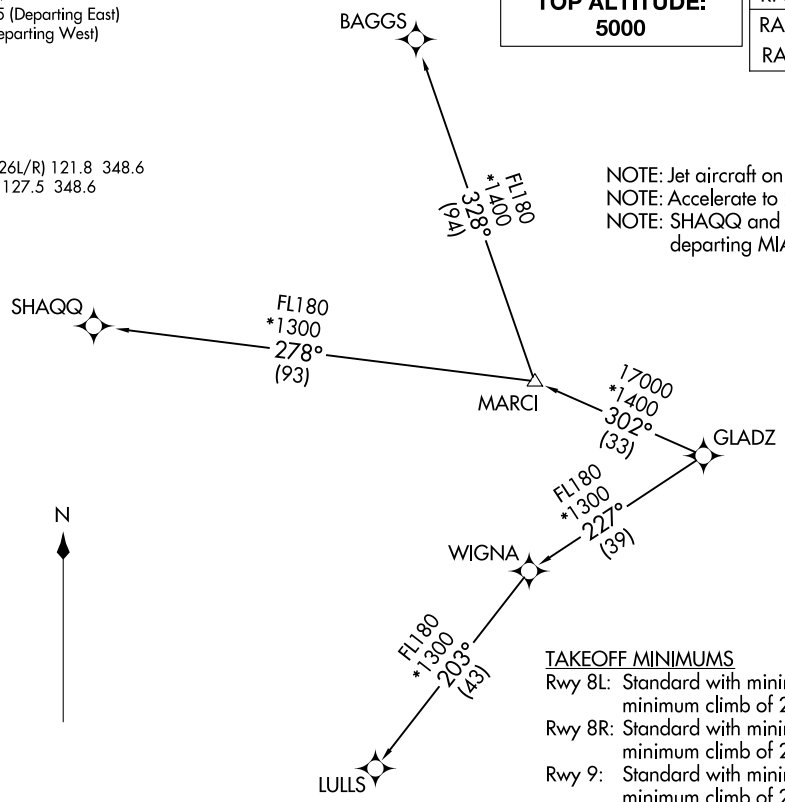
GLADZ FOUR DEPARTURE (RNAV) Transition Routes  
(GLADZ4, GLADZ) 31OCT24  
MIAMI, FLORIDA  
MIAMI INTL (MIA)

MIAMI DEP CON  
119.45 290.325 (Departing East)  
125.5 354.1 (Departing West)  
D-ATIS  
133.675  
CLNC DEL  
135.35  
CPDLC  
GND CON  
(Rwys 8L/R, 12, 26L/R) 121.8 348.6  
(Rwys 9, 27, 30) 127.5 348.6  
MIAMI TOWER  
118.3 256.9

**TOP ALTITUDE:  
5000**

RNAV-1 DME/DME/IRU or GPS.  
RADAR required for NON-GPS equipped aircraft.  
RADAR required.

NOTE: Jet aircraft only.  
NOTE: Accelerate to 250K until leaving 10000, if unable, advise ATC.  
NOTE: SHAQQ and BAGGS transitions ATC assigned except aircraft departing MIA.



TAKEOFF MINIMUMS

- Rwy 8L: Standard with minimum climb of 500'/NM to 520, then minimum climb of 215'/NM to 1400.
- Rwy 8R: Standard with minimum climb of 500'/NM to 520, then minimum climb of 235'/NM to 1400.
- Rwy 9: Standard with minimum climb of 500'/NM to 520, then minimum climb of 240'/NM to 1400.
- Rwy 12: Standard with minimum climb of 500'/NM to 520, then minimum climb of 230'/NM to 1400.
- Rwys 26L/R, 27, 30: Standard with minimum climb of 500'/NM to 520.



NOTE: Chart not to scale. (CONTINUED ON FOLLOWING PAGE)

(GLADZ4, GLADZ) 24305  
GLADZ FOUR DEPARTURE (RNAV) Transition Routes  
AL-257 (FAA)  
MIAMI INTL (MIA)  
MIAMI, FLORIDA

# GLADZ FOUR DEPARTURE (RNAV)



## DEPARTURE ROUTE DESCRIPTION SEE ADDITIONAL REQUIREMENTS ON AAUP

TAKEOFF RUNWAYS 8L/R: Climb on heading 092° to 520, then direct CSALT, then on track 007° to DEALZ, then on track 348° to LIIVV, then on track 282° to BLART, then on track 275° to SELFI, then on track 237° to cross GAYTR at or above 5000, thence. . . .

TAKEOFF RUNWAY 9: Climb on heading 092° to intercept course 082° to CSALT, then on track 007° to DEALZ, then on track 348° to LIIVV, then on track 282° to BLART, then on track 275° to SELFI, then on track 237° to cross GAYTR at or above 5000, thence. . . .

TAKEOFF RUNWAY 12: Climb on heading 124° to intercept course 078° to CSALT, then on track 007° to DEALZ, then on track 348° to LIIVV, then on track 282° to BLART, then on track 275° to SELFI, then on track 237° to cross GAYTR at or above 5000, thence. . . .

TAKEOFF RUNWAY 26L: Climb on heading 272° to intercept course 260° to KSENO, then on track 275° to cross GAYTR at or above 5000, thence. . . .

TAKEOFF RUNWAY 26R: Climb on heading 272° to intercept course 258° to KSENO, then on track 275° to cross GAYTR at or above 5000, thence. . . .

TAKEOFF RUNWAY 27: Climb on heading 272° to 520, then direct KSENO, then on track 275° to cross GAYTR at or above 5000, thence. . . .

TAKEOFF RUNWAY 30: Climb on heading 304° to intercept course 271° to cross GAYTR at or above 5000, thence. . . .

. . . .on track 258° to RUTLG, then on track 258° to GLADZ, then on transition.  
Maintain 5000, expect clearance to filed altitude 10 minutes after departure.

BAGGS TRANSITION (GLADZ4.BAGGS)

LULLS TRANSITION (GLADZ4.LULLS)

SHAQQ TRANSITION (GLADZ4.SHAQQ)

SE-3, 28 NOV 2024 to 26 DEC 2024

SE-3, 28 NOV 2024 to 26 DEC 2024