

MIAMI ONE DEPARTURE
(MIA1.MIA) 05SEP24

MIAMI ONE DEPARTURE
(MIA1.MIA) 24249

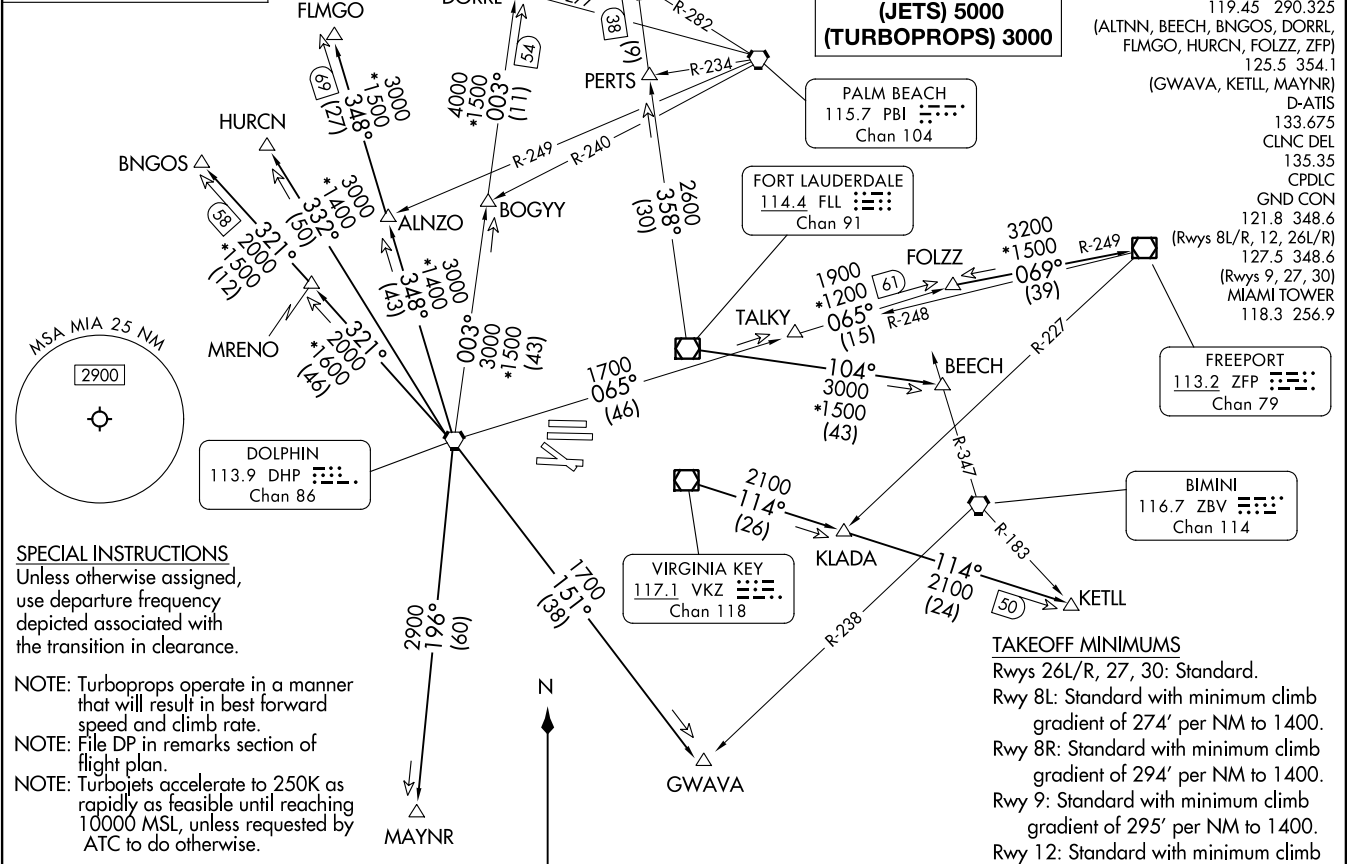
AL-257 (FAA)

MIAMI INTL (MIA)
MIAMI, FLORIDA

RADAR and DME required.

**TOP ALTITUDE:
(JETS) 5000
(TURBOPROPS) 3000**

MIAMI DEP CON
119.45 290.325
(ALTNN, BEECH, BNGOS, DORRL,
FLMGO, HURCN, FOLZZ, ZFP)
125.5 354.1
(GWAVA, KETLL, MAYNR)
D-ATIS
133.675
CLNC DEL
135.35
CPDLC
GND CON
121.8 348.6
127.5 348.6
(Rwys 8L/R, 12, 26L/R)
127.5 348.6
(Rwys 9, 27, 30)
MIAMI TOWER
118.3 256.9



SPECIAL INSTRUCTIONS
Unless otherwise assigned,
use departure frequency
depicted associated with
the transition in clearance.

- NOTE: Turboprops operate in a manner
that will result in best forward
speed and climb rate.
- NOTE: File DP in remarks section of
flight plan.
- NOTE: Turbojets accelerate to 250K as
rapidly as feasible until reaching
10000 MSL, unless requested by
ATC to do otherwise.

NOTE: Chart not to scale.

(CONTINUED ON FOLLOWING PAGE)

MIAMI, FLORIDA
MIAMI INTL (MIA)

MIAMI ONE DEPARTURE



DEPARTURE ROUTE DESCRIPTION

TAKEOFF ALL RUNWAYS: Climb on assigned heading for RADAR vectors to assigned transition. Jets climb and maintain 5000, props and turboprops climb and maintain 3000...

... Expect filed altitude ten (10) minutes after departure.

ALTNN TRANSITION (MIA1.ALTNN): From over FLL VOR/DME on FLL R-358 to ALTNN.

BEECH TRANSITION (MIA1.BEECH): From over FLL VOR/DME on FLL R-104 to BEECH.

BNGOS TRANSITION (MIA1.BNGOS): From over DHP VORTAC on DHP R-321 to BNGOS.

DORRL TRANSITION (MIA1.DORRL): From over DHP VORTAC on DHP R-003 to DORRL.

FLMGO TRANSITION (MIA1.FLMGO): From over DHP VORTAC on DHP R-348 to FLMGO.

FOLZZ TRANSITION (MIA1.FOLZZ): From over DHP VORTAC on DHP R-065 to FOLZZ.

FREEPOR TRANSITION (MIA1.ZFP): From over DHP VORTAC on DHP R-065 to FOLZZ then on ZFP R-249 to ZFP VOR/DME.

GWAVA TRANSITION (MIA1.GWAVA): From over DHP VORTAC on DHP R-151 to GWAVA.

HURCN TRANSITION (MIA1.HURCN): From over DHP VORTAC on DHP R-332 to HURCN.

KETLL TRANSITION (MIA1.KETLL): From over VKZ VOR/DME on VKZ R-114 to KETLL.

MAYNR TRANSITION (MIA1.MAYNR): From over DHP VORTAC on DHP R-196 to MAYNR.

SE-3, 28 NOV 2024 to 26 DEC 2024

SE-3, 28 NOV 2024 to 26 DEC 2024