

MIAMI, FLORIDA

AL-257 (FAA)

24137

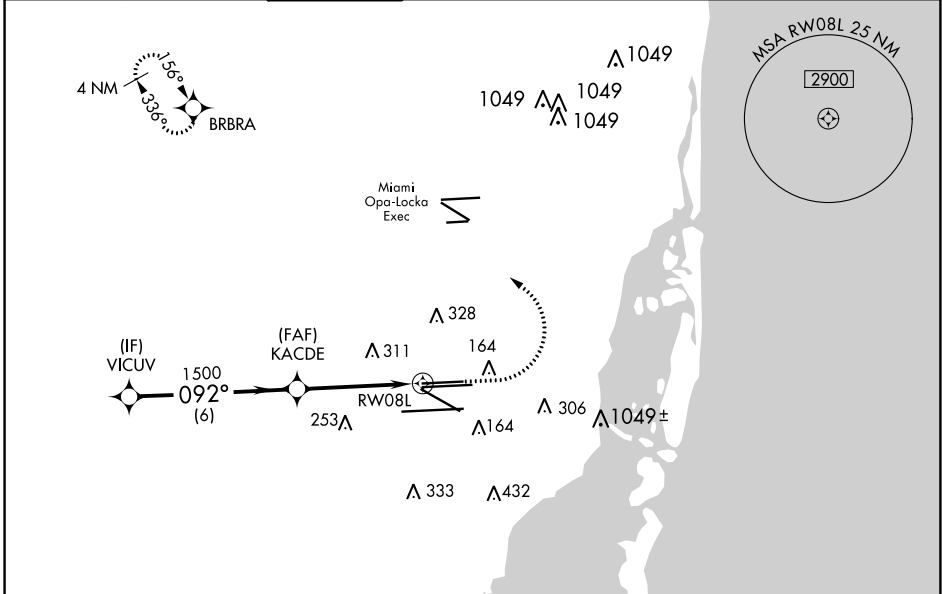
WAAS CH 42703 W08A	APP CRS 092°	Rwy Idg TDZE Apt Elev	8600 9 9
--	------------------------	-----------------------------	-------------------------------------

RNAV (GPS) RWY 8L

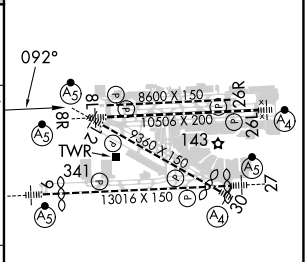
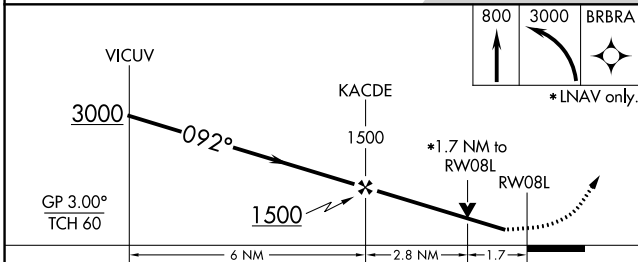
MIAMI INTL (MIA)

RNP APCH.	<p>▼ For uncompensated Baro-VNAV systems, LNAV/VNAV NA below 5°C (41°F) or above 54°C (130°F). Simultaneous approach authorized with Rwy 9. Rwy 8L helicopter: visibility reduction below 3/4 SM NA. LNAV procedure NA during simultaneous operations. Use of FD or AP providing RNAV track guidance required during simultaneous operations.</p>	<p>MISSED APPROACH: Climb to 800 then climbing left turn to 3000 direct BRBRA and hold.</p>
-----------	---	---

D-ATIS	MIAMI APP CON	MIAMI TOWER	GND CON	CLNC DEL	CPDLC
ARR 119.15 DEP 133.675	124.85 322.3	118.3 256.9	121.8 (8L/8R/12/26L/26R) 127.5 (9/27/30)	135.35	



ELEV	9	TDZE	9
------	---	------	---



CATEGORY	A	B	C	D
LPV DA		279-1	270 (300-1)	
LNAV/VNAV DA		513-1 3/8	504 (600-1 3/8)	
LNAV MDA	600-1	591 (600-1)	600-1 3/4	591 (600-1 3/4)

TDZ/CL Rwy 8R
REIL Rwys 8L and 26R
HIRL all Rwys

MIAMI, FLORIDA
Amdt 2B 30JAN20

25°48'N-80°17'W

MIAMI INTL (MIA) RNAV (GPS) RWY 8L

SE-3, 28 NOV 2024 to 26 DEC 2024

SE-3, 28 NOV 2024 to 26 DEC 2024