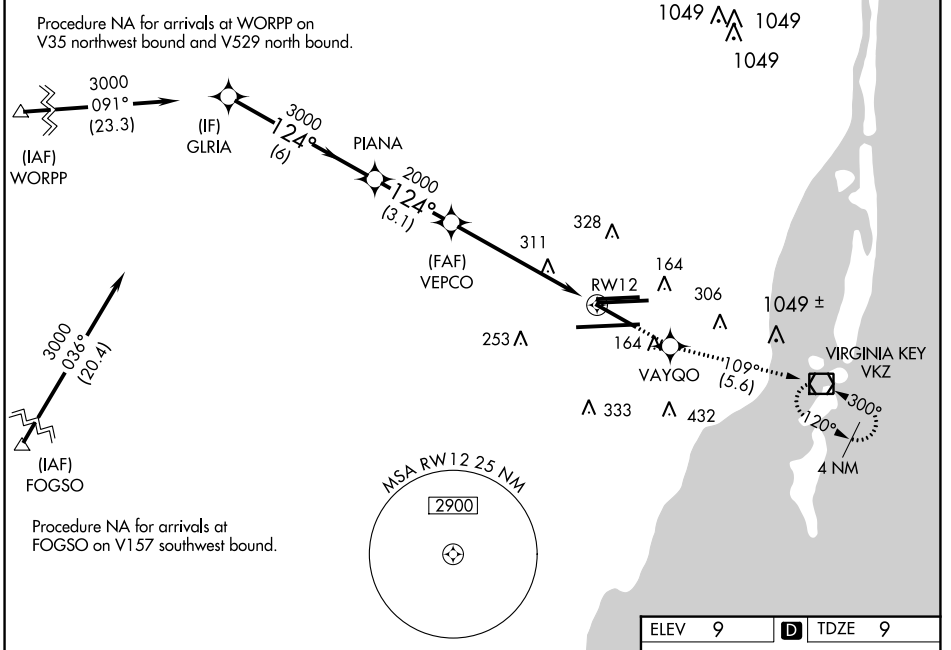


WAAS CH 61204 W12A	APP CRS 124°	Rwy Idg TDZE 9 Apt Elev 9	8579
--	------------------------	---	-------------

RNAV (GPS) Z RWY 12

MIAMI INTL (MIA)

RNP APCH - GPS.		MALSR		MISSED APPROACH: Climb to 3000 direct VAYGO and on 109° track to VKZ VOR/DME and hold, continue climb-in-hold to 3000.		
<p>▼ Rwy 12 helicopter visibility reduction below 3/4 SM NA. For uncompensated Baro-VNAV systems, LNAV/VNAV NA below 9°C or above 54°C. For inop ALS, increase LPV all Cats visibility to RVR 6000, LNAV/VNAV all Cats to 1 3/8 and LNAV Cat A/B to 5500.</p>						
D-ATIS ARR 119.15 DEP 133.675	MIAMI APP CON 124.85 322.3	MIAMI TOWER 118.3 256.9	GND CON 121.8 (8L/8R/12/26L/26R) 127.5 (9/27/30)	348.6	CLNC DEL 135.35	CPDLC



VGS1 and RNAV glidepath not coincident (VGS1 Angle 3.00/TCH 72).		3000	VAYGO	tr	VKZ
		↑	✧	109°	◻
<p>GLRIA PIANA VEPCO</p> <p>3000 — 124° — 3000</p> <p>GP 3.00° TCH 56</p> <p>2000</p> <p>1.6 NM to RWY 12</p>					
		6 NM	3.1 NM	4.4 NM	1.6 NM
CATEGORY	A	B	C	D	
LPV DA		391/40	382 (400-3/4)		
LNAV/VNAV DA		512/55	503 (600-1)		
LNAV MDA	600/40	591 (600-3/4)	600-1 1/4	591 (600-1 1/4)	

ELEV 9	TDZE 9
--------	--------

TDZ/CL Rwy 8R
REIL Rwys 8L and 26R
HIRL all Rwys

SE-3, 28 NOV 2024 to 26 DEC 2024

SE-3, 28 NOV 2024 to 26 DEC 2024