

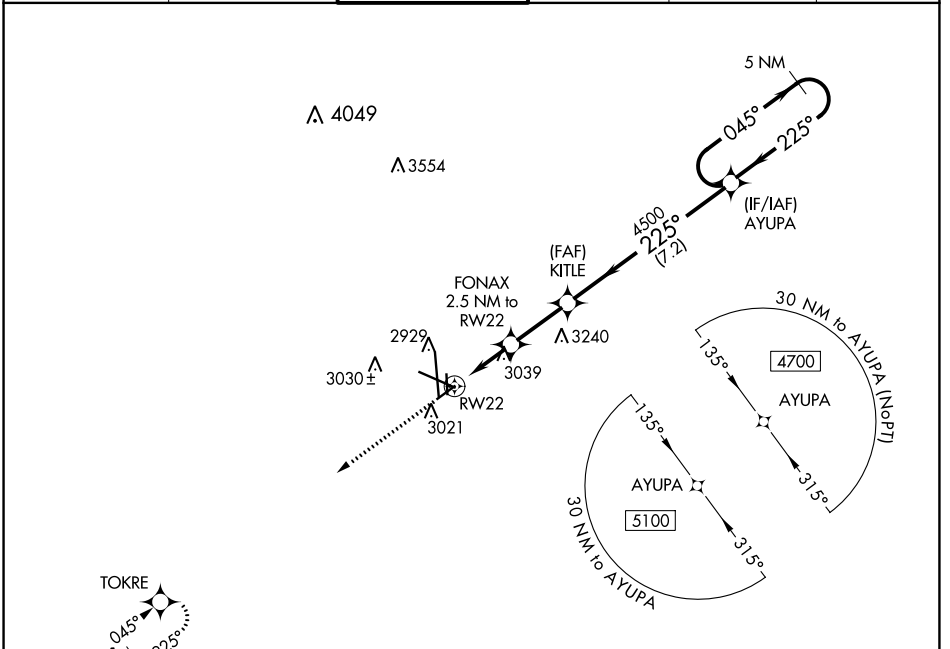
WAAS CH 50429 W22A	APP CRS 225°	Rwy Idg TDZE Apt Elev	4605 2855 2872
--	------------------------	-----------------------------	---

RNAV (GPS) RWY 22

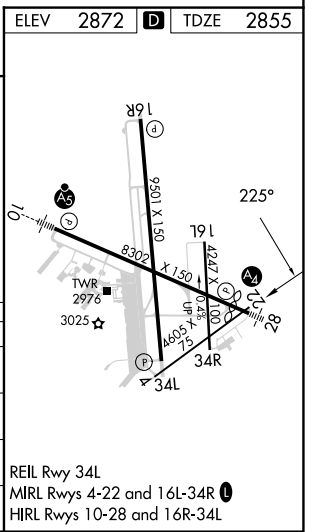
MIDLAND INTL AIR AND SPACE PORT (M.A.F.)

RNP APCH.	MISSED APPROACH: Climb to 5000 direct TOKRE and hold.
▼ For uncompensated Baro-VNAV systems, LNAV/VNAV NA below -11°C or above 25°C. Circling Rwy 16L NA at night.	

ATIS 126.8 235.975	MIDLAND APP CON* 124.6 290.4	MIDLAND TOWER* 118.7 (CTAF) 0273.45	GND CON 121.9 348.6	CLNC DEL 118.05 317.65	UNICOM 122.95
------------------------------	--	---	-------------------------------	----------------------------------	-------------------------



ELEV	2872	TDZE	2855
5000 TOKRE			
*LNAV only			
	FONAX 2.5 NM to RW22 *3700	KITLE 4500	AYUPA 5 NM Holding Pattern 4700
	*1.3 NM to RW22	2.5 NM	7.2 NM
CATEGORY	A	B	C
LPV DA	3055-3/4		200 (200-3/4)
LNAV/VNAV DA	3317-13/8		462 (500-13/8)
LNAV MDA	3320-1	465 (500-1)	3320-13/8 465 (500-13/8)
C CIRCLING	3440-1	568 (600-1)	3440-1 568 (600-1) 568 (600-1 1/2)
			3520-2 648 (700-2)



SC-3, 28 NOV 2024 to 26 DEC 2024

SC-3, 28 NOV 2024 to 26 DEC 2024