

WAAS CH <b>77924</b> <b>W22A</b>	APP CRS <b>223°</b>	Rwy Idg <b>5764</b> TDZE <b>2630</b> Apt Elev <b>2634</b>
----------------------------------------	------------------------	-----------------------------------------------------------------

# RNAV (GPS) RWY 22

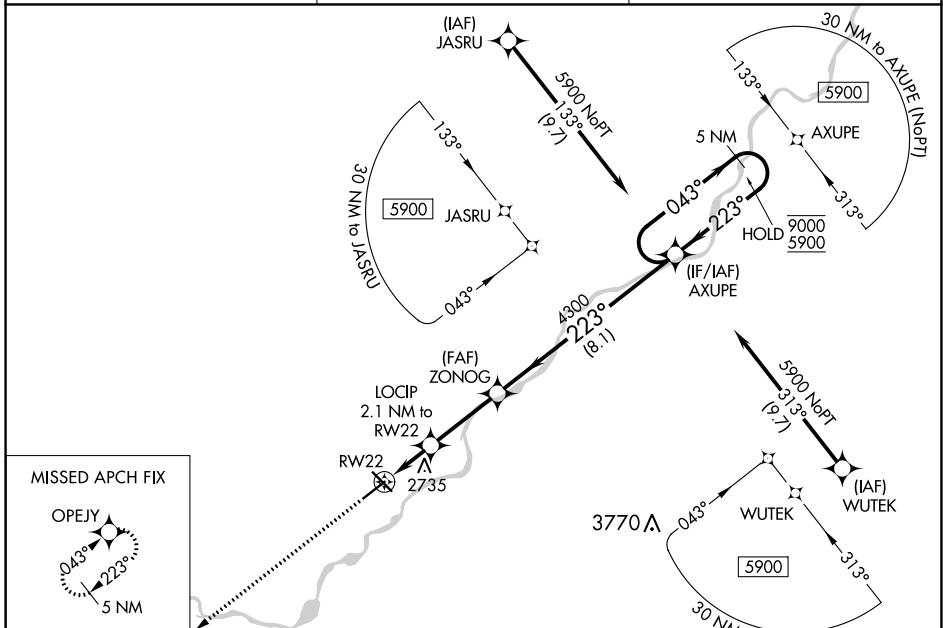
FRANK WILEY FLD (MLS)

RNP APCH-GPS.

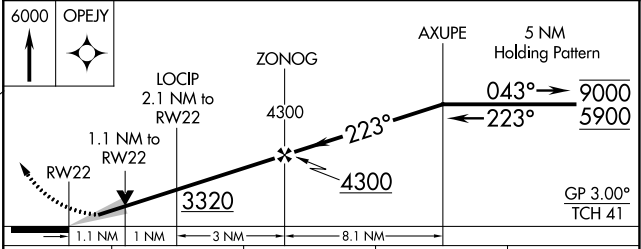
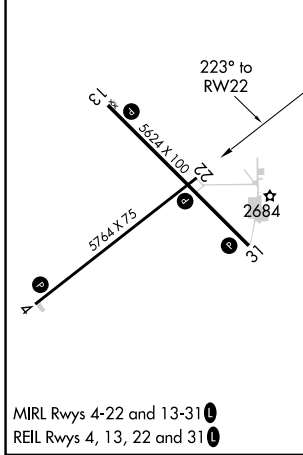
**⚠** Baro-VNAV and VDP NA when using Glendive altimeter setting. For uncompensated Baro-VNAV systems, LNAV/VNAV NA below -25°C or above 54°C. When local altimeter setting not received, use Glendive altimeter setting: increase LPV and LNAV/VNAV DA to 3047 and all visibilities ½ SM. Increase all MDA 180 feet and LNAV Cat C and D visibilities ¾ SM and Circling Cat C and D visibilities ½ SM.

MISSED APPROACH: Climb to 6000 direct OPEJY and hold, continue climb-in-hold to 6000.

ASOS <b>135.575</b>	SALT LAKE CENTER <b>126.85 305.2</b>	UNICOM <b>123.0 (CTAF) 0</b>
------------------------	-----------------------------------------	---------------------------------



ELEV 2634	<b>D</b>	TDZE 2630
-----------	----------	-----------



CATEGORY	A	B	C	D
LPV DA		2880-1	250 (300-1)	
LNAV/VNAV DA		2880-1	250 (300-1)	
LNAV MDA		3000-1	370 (400-1)	
<b>C</b> CIRCLING	3060-1 426 (500-1)	3100-1 466 (500-1)	3160-1½ 526 (600-1½)	3320-2¼ 686 (700-2¼)

NW-1, 28 NOV 2024 to 26 DEC 2024

NW-1, 28 NOV 2024 to 26 DEC 2024