

VORTAC MLF 112.1 Chan 58	APP CRS 344°	Rwy Idg TDZE Apt Elev N/A N/A 5042
--	------------------------	--

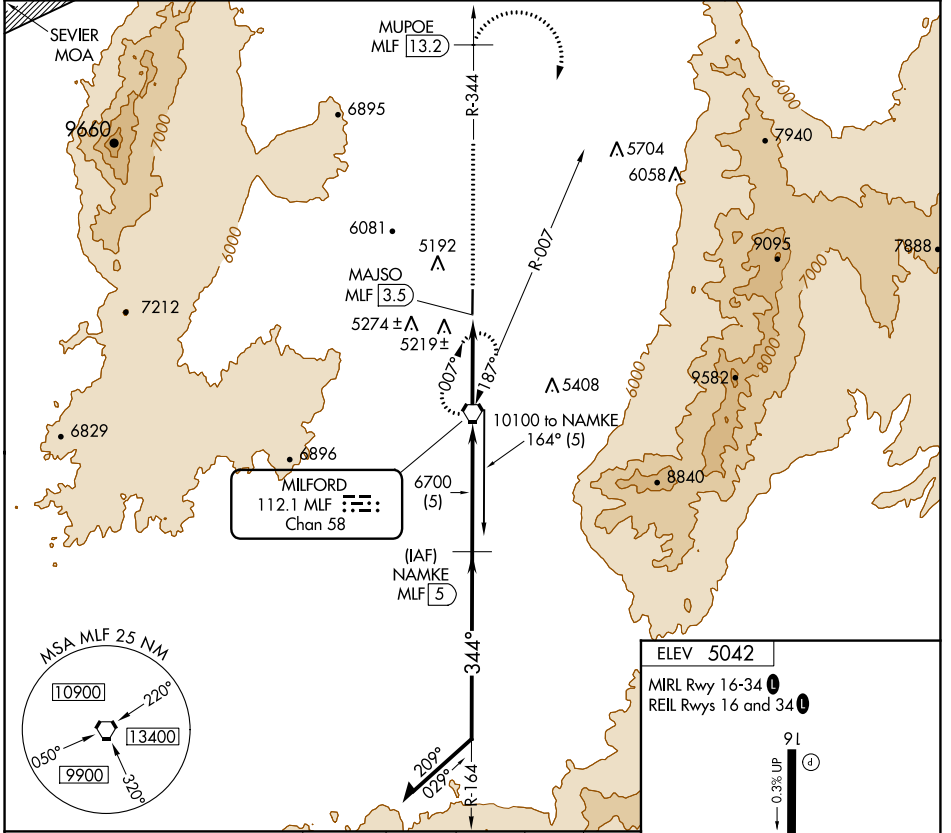
VOR/DME-A

MILFORD MUNI/BEN AND JUDY BRISCOE FLD (MLF)

⚠ When local altimeter setting not received, use Cedar City altimeter setting and increase all MDAs 180 feet, Circling Cat D NA. When VGSI inop, procedure NA at night. Visibility reduction by helicopters NA.

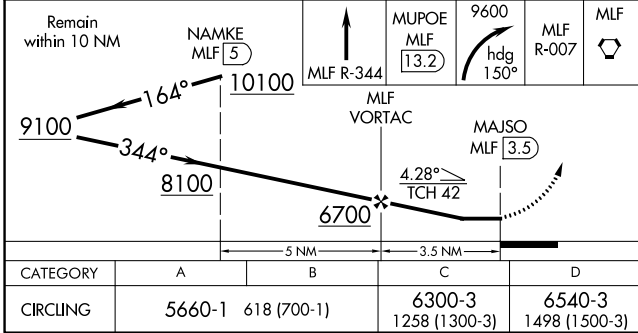
⚠ MISSED APPROACH: Climb on MLF VORTAC R-344 to MUPOE/MLF 13.2 DME then climbing right turn to 9600 on heading 150° and MLF VORTAC R-007 to MILFORD VORTAC and hold.

ASOS 135.025	SALT LAKE CENTER 125.575 379.275	UNICOM 122.8 (CTAF) 0
------------------------	--	---------------------------------



SW-4, 28 NOV 2024 to 26 DEC 2024

SW-4, 28 NOV 2024 to 26 DEC 2024



ELEV 5042

MRL Rwy 16-34

REIL Rws 16 and 34

91
0.3% UP
5000 X 7.5
34

344°