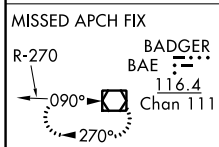
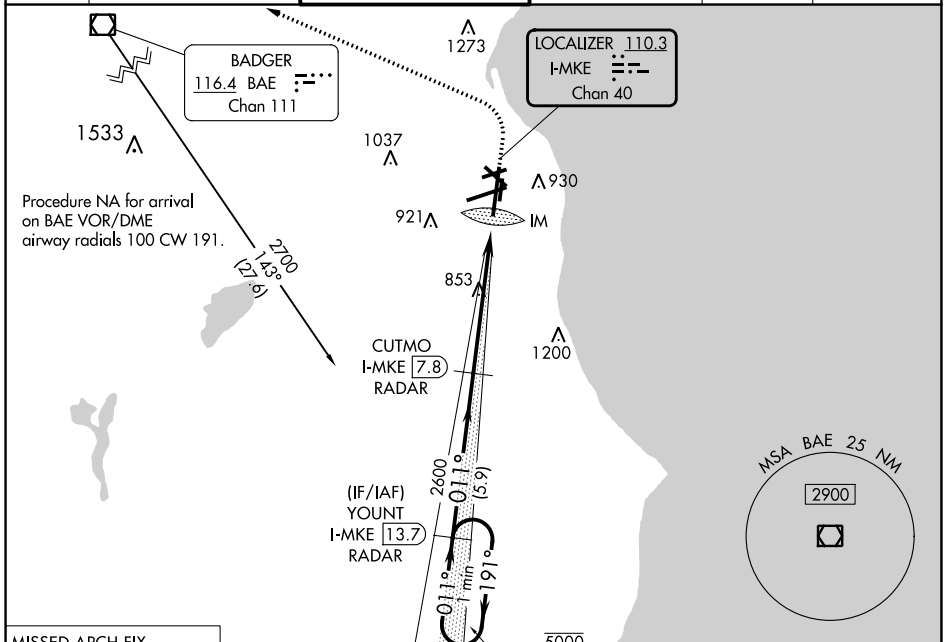


LOC/DME I-MKE 110.3 Chan 40	APP CRS 011°	Rwy ldg TDZE Apt Elev	9080 704 728
---	------------------------	-----------------------------	---

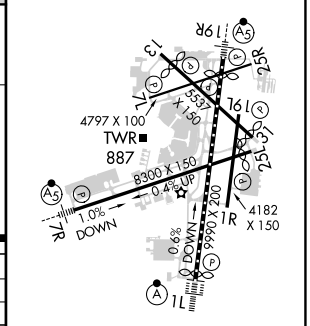
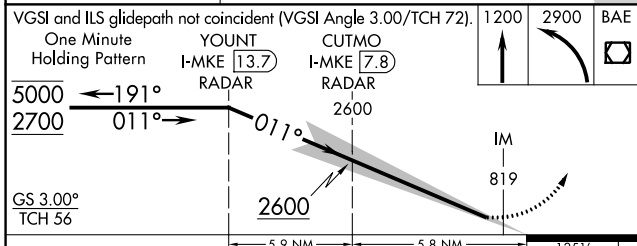
ILS RWY 1L (CAT II & III)

GENERAL MITCHELL INTL (MKE)

DME or RADAR required.		ALSIF-2	MISSED APPROACH: Climb to 1200 then climbing left turn to 2900 direct BAE VOR/DME and hold.		
D-ATIS 126.4	MILWAUKEE APP CON 126.5 307.0	MILWAUKEE TOWER 124.575 269.05	GND CON 121.8 263.125	CLNC DEL 120.8	CPDLC



ELEV 728	D TDZE 704
TDZ/CL Rwy 1L REIL Rws 1R, 7L, 13, 25L, 25R and 31	



CATEGORY	A	B	C	D
S-ILS 1L	CAT II RA 98/12 100 DA 804			
S-ILS 1L	CAT III RVR 06			

CATEGORY II & III ILS - SPECIAL AIRCREW & AIRCRAFT CERTIFICATION REQUIRED

HIRL Rws 1L-19R and 7R-25L
 MIRL Rws 1R-19L, 13-31, and 7L-25R

EC-3, 28 NOV 2024 to 26 DEC 2024