

LOC/DME I-BLY 110.3 Chan 40	APP CRS 191°	Rwy 19R Idg 9205 TDZE 672 Apt Elev 729	Rwy 19L Idg 4182 TDZE 675 Apt Elev 729
---	------------------------	---	---

ILS or LOC RWY 19R

GENERAL MITCHELL INTL (MKE)

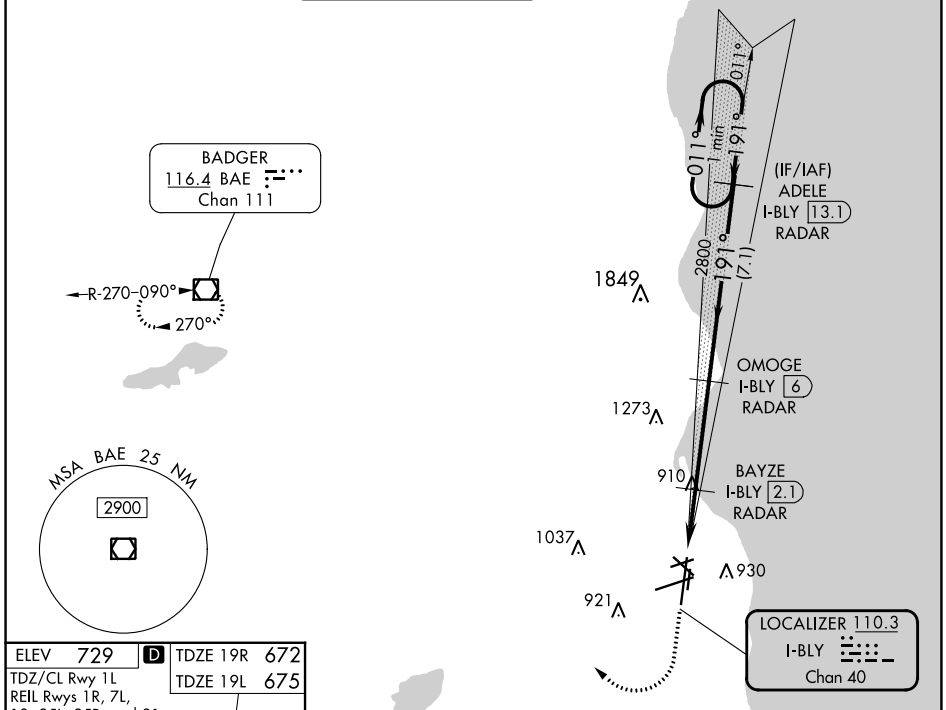
RADAR required for procedure entry, RADAR or DME required for LOC only.

▼ For inop HALS, increase visibility to 1 mile.
RVR 1800 authorized with use of FD or AP or HUD to DA.



MISSED APPROACH: Climb to 2800 then right turn direct BAE VOR/DME and hold.

D-ATIS 126.4	MILWAUKEE APP CON 126.5 307.0	MILWAUKEE TOWER 124.575 269.05	GND CON 121.8 263.125	CLNC DEL 120.8	CPDLC
------------------------	---	--	---------------------------------	--------------------------	-------

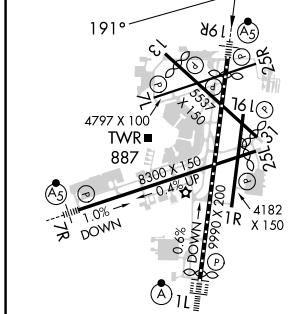


EC-3, 28 NOV 2024 to 26 DEC 2024

EC-3, 28 NOV 2024 to 26 DEC 2024

ELEV 729	TDZE 19R 672
TDZ/CL Rwy 1L	TDZE 19L 675

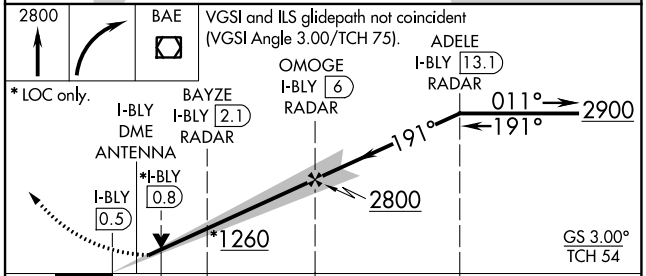
REIL Rwys 1R, 7L, 13, 25L, 25R, and 31



HIRL Rwys 1L-19R and 7R-25L
MIRL Rwys 1R-19L, 13-31, and 7L-25R
FAF to MAP 6.5 NM

Knots	60	90	120	150	180
Min:Sec	6:30	4:20	3:15	2:36	2:10

MILWAUKEE, WISCONSIN
Amdt 13A 26MAR20



CATEGORY	A	B	C	D
S-ILS 19R#	872/24 200 (200-1/2)			
S-LOC 19R	1160/24	488 (500-1/2)	1160/50	488 (500-1)
SIDESTEP 19L	1160-1	485 (500-1)	1160-1/2 485 (500-1/2)	1160-2 485 (500-2)
<input checked="" type="checkbox"/> CIRCLING	1240-1	511 (600-1)	1240-1/2 511 (600-1/2)	1360-2 631 (700-2)

42°57'N-87°54'W

GENERAL MITCHELL INTL (MKE)

ILS or LOC RWY 19R