

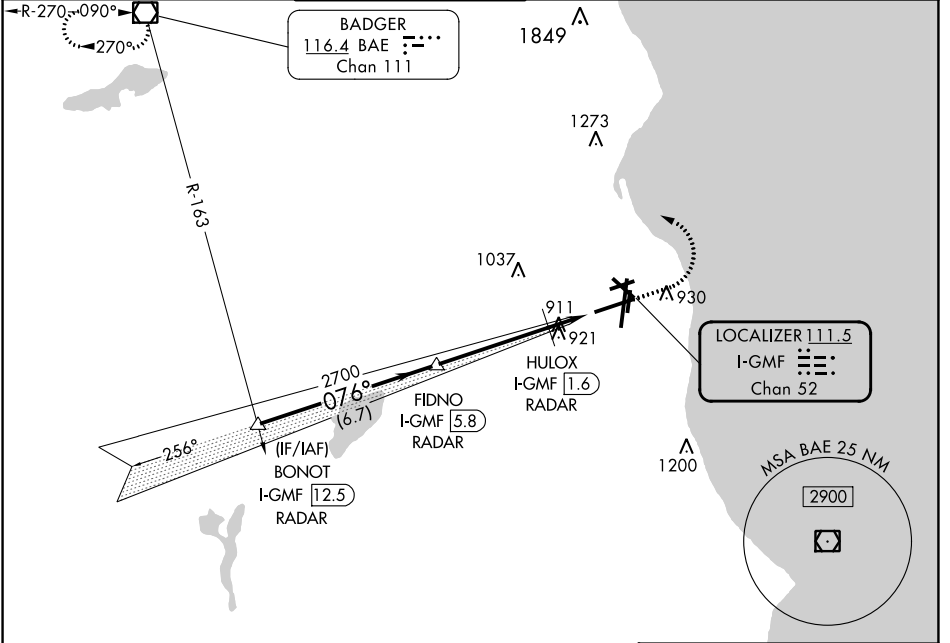
LOC/DME I-GMF 111.5 Chan 52	APP CRS 076°	Rwy Idg 8012 TDZE 729 Apt Elev 729
---	------------------------	---

ILS or LOC RWY 7R

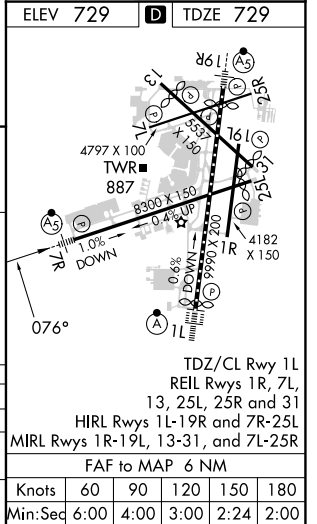
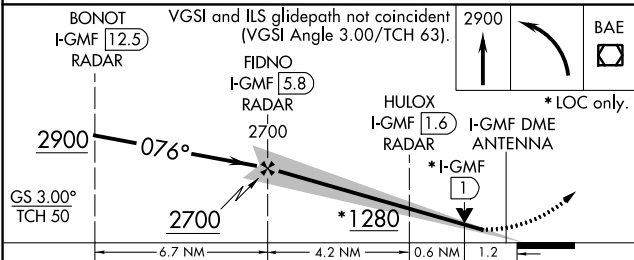
GENERAL MITCHELL INTL (MKE)

RADAR required for procedure entry. DME or RADAR required.		MALSR 	MISSED APPROACH: Climb to 2900 then left turn direct BAE VOR/DME and hold.	
# RVR 1800 authorized with use of FD or AP or HUD to DA.				

D-ATIS 126.4	MILWAUKEE APP CON 126.5 307.0	MILWAUKEE TOWER 124.575 269.05	GND CON 121.8 263.125	CLNC DEL 120.8	CPDLC
------------------------	---	--	---------------------------------	--------------------------	-------



BONOT I-GMF 12.5 RADAR	VGSI and ILS glidepath not coincident (VGSI Angle 3.00/TCH 63).	2900	BAE
FIDNO I-GMF 5.8 RADAR			
HULOX I-GMF 1.6 RADAR			



CATEGORY	A	B	C	D
S-ILS 7R #	929/24 200 (200-½)			
S-LOC 7R	1180/24	451 (500-½)	1180/45	451 (500-¾)
CIRCLING	1240-1	511 (600-1)	1240-1½	1360-2
			511 (600-½)	631 (700-2)

EC-3, 28 NOV 2024 to 26 DEC 2024

EC-3, 28 NOV 2024 to 26 DEC 2024