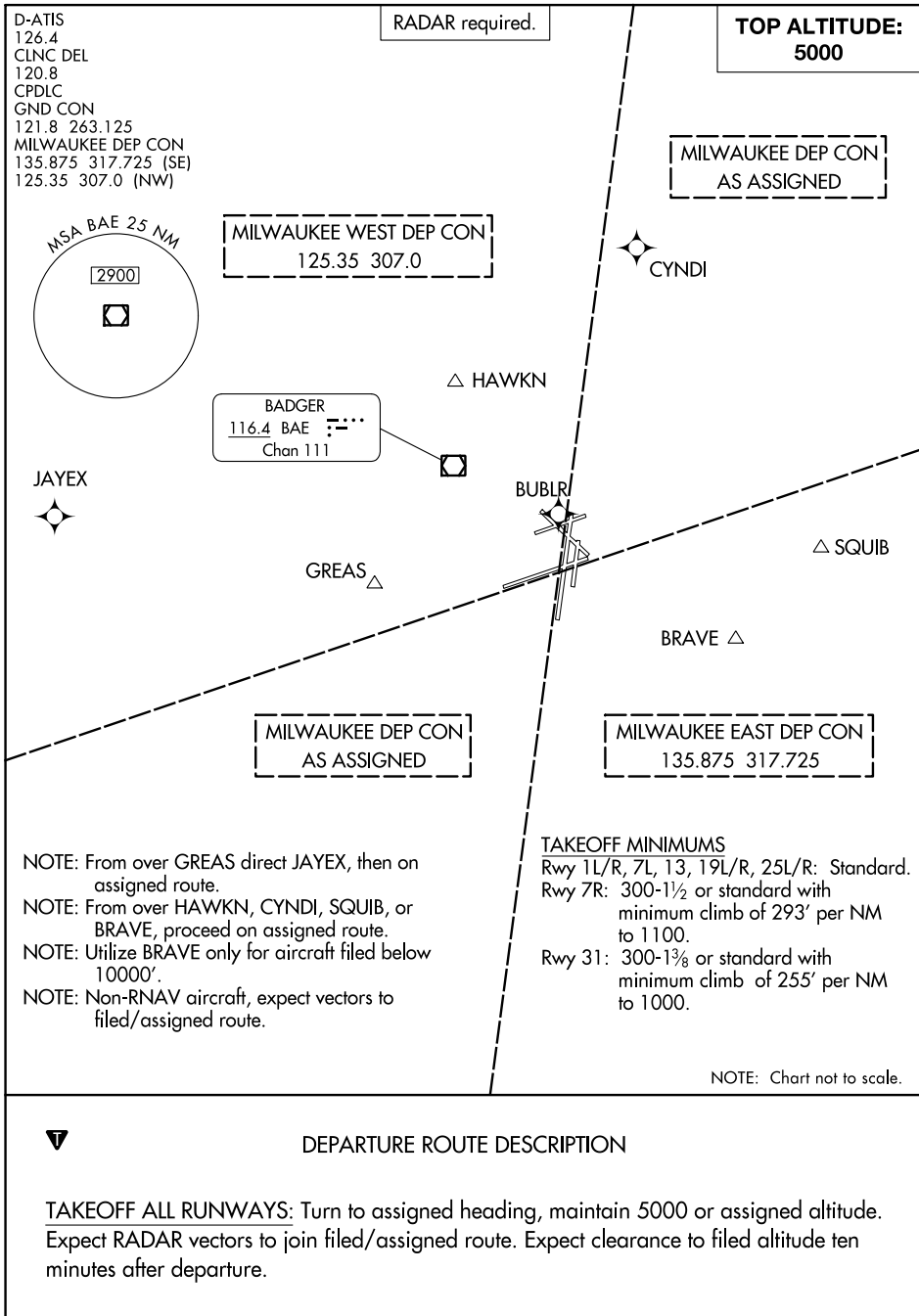


(MKE9.BUBLR) 23334

MITCHELL NINE DEPARTURE

AL-262 (FAA)

GENERAL MITCHELL INTL (MKE)
MILWAUKEE, WISCONSIN



EC-3, 28 NOV 2024 to 26 DEC 2024

EC-3, 28 NOV 2024 to 26 DEC 2024

- NOTE: From over GREAS direct JAYEX, then on assigned route.
- NOTE: From over HAWKN, CYNDI, SQUIB, or BRAVE, proceed on assigned route.
- NOTE: Utilize BRAVE only for aircraft filed below 10000'.
- NOTE: Non-RNAV aircraft, expect vectors to filed/assigned route.

TAKEOFF MINIMUMS
 Rwy 11L/R, 7L, 13, 19L/R, 25L/R: Standard.
 Rwy 7R: 300-1½ or standard with minimum climb of 293' per NM to 1100.
 Rwy 31: 300-1⅜ or standard with minimum climb of 255' per NM to 1000.

NOTE: Chart not to scale.



DEPARTURE ROUTE DESCRIPTION

TAKEOFF ALL RUNWAYS: Turn to assigned heading, maintain 5000 or assigned altitude. Expect RADAR vectors to join filed/assigned route. Expect clearance to filed altitude ten minutes after departure.

MITCHELL NINE DEPARTURE

(MKE9.BUBLR) 10AUG23

MILWAUKEE, WISCONSIN
GENERAL MITCHELL INTL (MKE)