

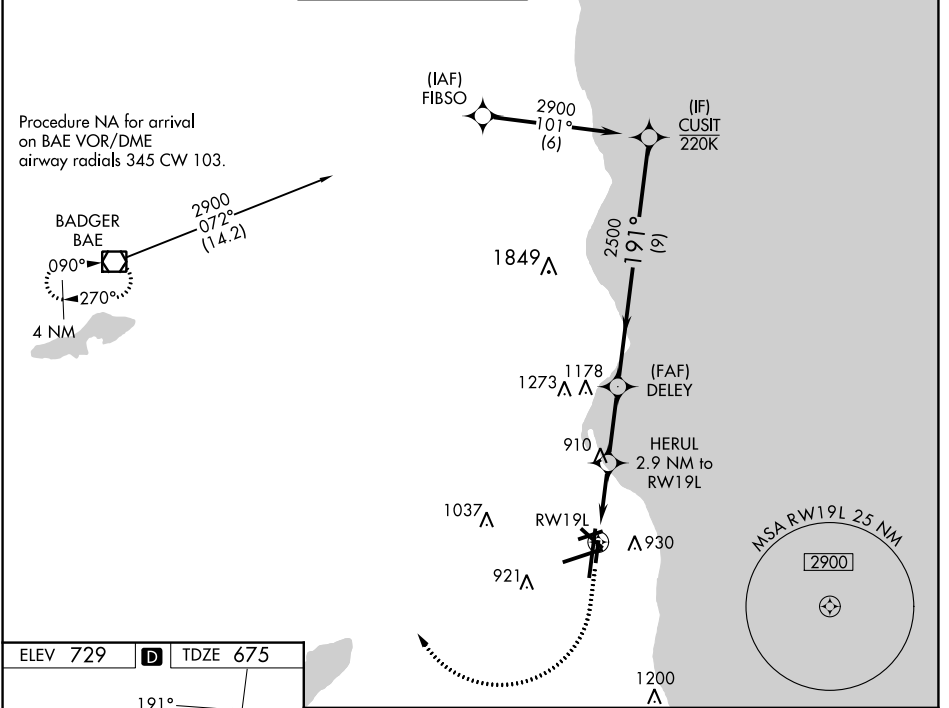
WAAS CH 42642 W19B	APP CRS 191°	Rwy Idg TDZE Apt Elev	4182 675 729
--	------------------------	-----------------------------	---

RNAV (GPS) RWY 19L

GENERAL MITCHELL INTL (MKE)

RNP APCH.	<p>▼ Rwy 19L helicopter visibility reduction below 3/4 SM NA. For uncompensated Baro-VNAV systems, LNAV/VNAV NA below -20°C or above 54°C.</p>	<p>MISSED APPROACH: Climb to 1600 then climbing right turn to 2900 direct BAE VOR/DME and hold.</p>
-----------	---	---

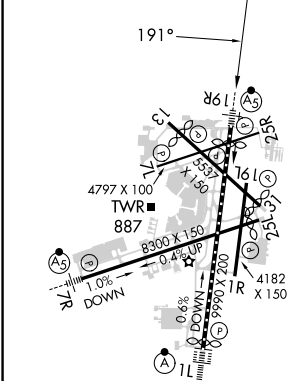
D-ATIS 126.4	MILWAUKEE APP CON 126.5 307.0	MILWAUKEE TOWER 124.575 269.05	GND CON 121.8 263.125	CLNC DEL 120.8	CPDLC
------------------------	---	--	---------------------------------	--------------------------	-------



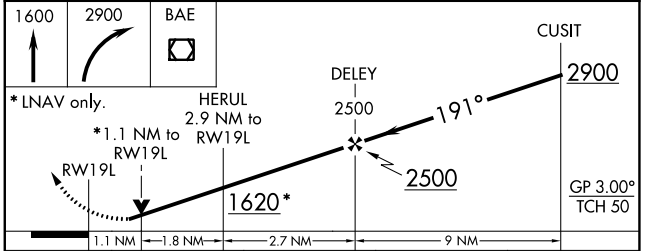
EC-3, 28 NOV 2024 to 26 DEC 2024

EC-3, 28 NOV 2024 to 26 DEC 2024

ELEV 729	D	TDZE 675
----------	----------	----------



TDZ/CL Rwy 1L
 REIL Rwy 1R, 7L, 13, 25L, 25R, and 31
 HIRL Rwy 1L-19R and 7R-25L
 MIRL Rwy 1R-19L, 13-31, and 7L-25R



CATEGORY	A	B	C	D
LPV DA	1032-1 357 (400-1)			
LNAV VNAV DA	1072-1 1/8 397 (400-1 1/8)			
LNAV MDA	1080-1 405 (400-1)	1080-1 1/8 405 (400-1 1/8)		
C CIRCLING	1240-1 511 (600-1)	1240-1 1/2 511 (600-1 1/2)	1360-2 631 (700-2)	