

WAAS CH 45742 W01A	APP CRS 011°	Rwy Idg TDZE Apt Elev	9080 704 728
--	------------------------	-----------------------------	---

RNAV (GPS) RWY 1L

GENERAL MITCHELL INTL (MKE)

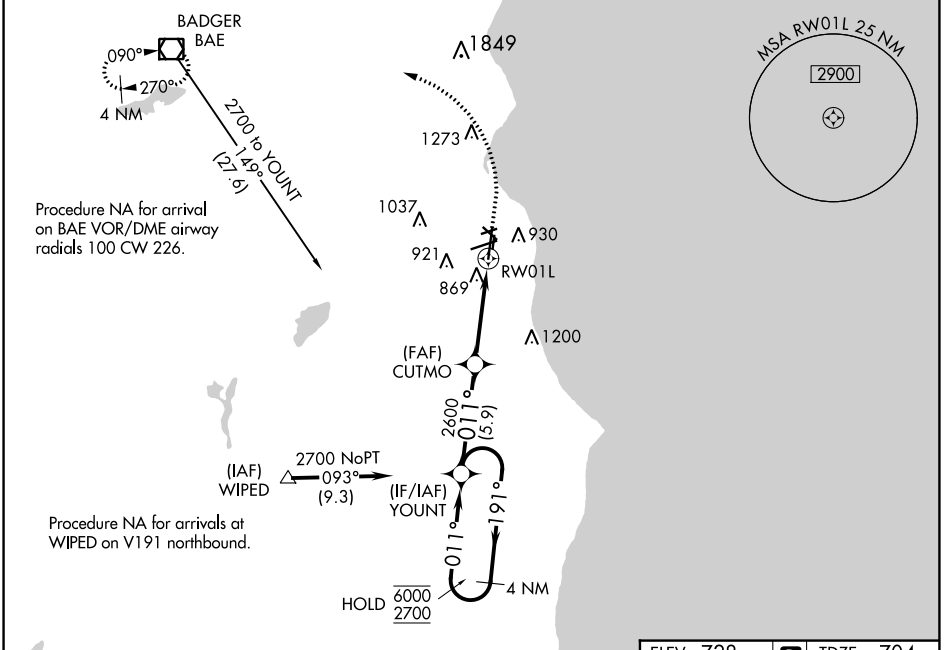
RNP APCH - GPS

▼ For uncompensated Baro-VNAV systems, LNAV/VNAV NA below -19°C or above 54°C. For inop ALS increase LNAV/VNAV all Cats visibility to RVR 6000, increase LNAV Cat C/D visibility to RVR 6000.

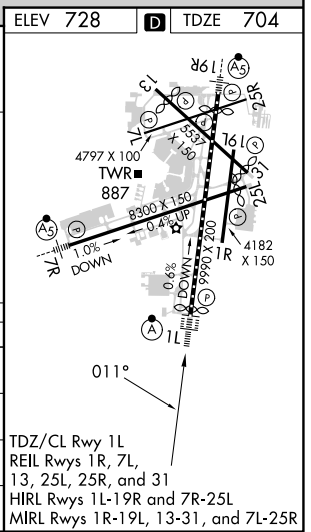


MISSED APPROACH: Climb to 1130 then climbing left turn to 2900 direct BAE VOR/DME and hold.

D-ATIS 126.4	MILWAUKEE APP CON 126.5 307.0	MILWAUKEE TOWER 124.575 269.05	GND CON 121.8 263.125	CLNC DEL 120.8	CPDLC
------------------------	---	--	---------------------------------	--------------------------	-------



VGSi and RNAV glidepath not coincident (VGSi Angle 3.00/TCH 72).		1130	2900	BAE
4 NM Holding Pattern YOUNT 6000 ← 191° 2700 011° →				
GP 3.00° TCH 56		1.1 NM to RW01L		
CATEGORY	A	B	C	D
LPV DA	904/18		200 (200-1/2)	
LNAV/VNAV DA	1120/40		416 (400-3/4)	
LNAV MDA	1120/24	416 (400-1/2)	1120/40	416 (400-3/4)
C CIRCLING	1240-1	512 (600-1)	1240-1 1/2 512 (600-1 1/2)	1360-2 632 (700-2)



MILWAUKEE, WISCONSIN
Amdt 2A 10AUG23

42°57'N-87°54'W

GENERAL MITCHELL INTL (MKE) RNAV (GPS) RWY 1L

EC-3, 28 NOV 2024 to 26 DEC 2024

EC-3, 28 NOV 2024 to 26 DEC 2024