

WAAS CH <b>97442</b> <b>W01B</b>	APP CRS <b>011°</b>	Rwy Idg TDZE Apt Elev	<b>4182</b> <b>678</b> <b>729</b>
--	------------------------	-----------------------------	---

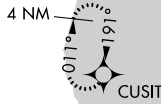
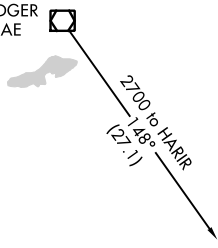
# RNAV (GPS) RWY 1R

GENERAL MITCHELL INTL (MKE)

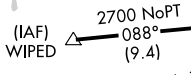
RNP APCH.		MISSED APPROACH: Climb to 2900 direct CUSIT and hold.			
For uncompensated Baro-VNAV systems, LNAV/VNAV NA below -20°C or above 54°C.					
D-ATIS <b>126.4</b>	MILWAUKEE APP CON <b>126.5 307.0</b>	MILWAUKEE TOWER <b>124.575 269.05</b>	GND CON <b>121.8 263.125</b>	CLNC DEL <b>120.8</b>	CPDLC

Procedure NA for arrival on BAE VOR/DME airway radials 085 CW 226.

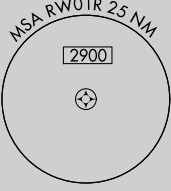
BADGER BAE



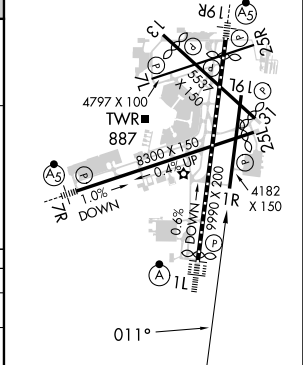
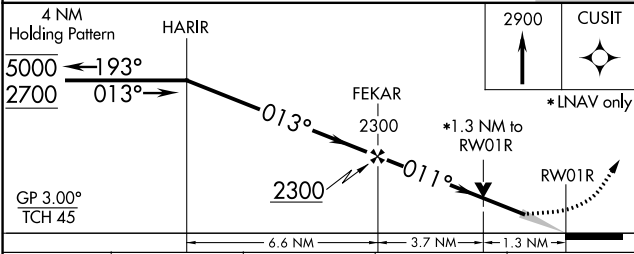
(IAF) WIPED



Procedure NA for arrivals at WIPED on V191 northbound.



ELEV 729 TDZE 678



CATEGORY	A	B	C	D
LPV DA	928-1		250 (200-1)	
LNAV/VNAV DA	1078-1½		400 (400-1½)	
LNAV MDA	1140-1 462 (500-1)		1140-1¾ 462 (500-1¾)	
CIRCLING	1240-1 511 (600-1)		1240-1½ 511 (600-1½) 1360-2 631 (700-2)	

TDZ/CL Rwy 1L  
REIL Rwy 1R, 7L, 13, 25L, 25R, and 31  
HIRL Rwy 1L-19R and 7R-25L  
MIRL Rwy 1R-19L, 13-31, and 7L-25R