

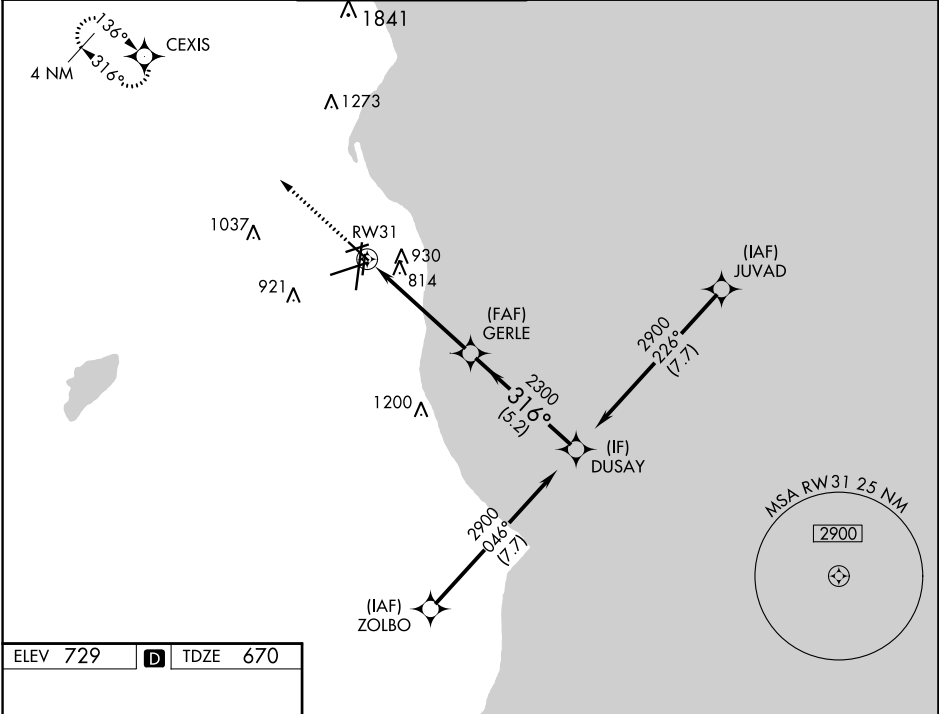
WAAS CH <b>48842</b> <b>W31A</b>	APP CRS <b>316°</b>	Rwy ldg TDZE Apt Elev	<b>5152</b> <b>670</b> <b>729</b>
--	------------------------	-----------------------------	---

# RNAV (GPS) RWY 31

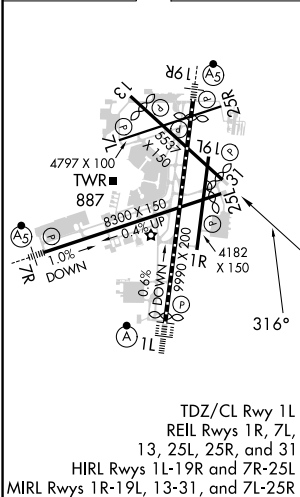
GENERAL MITCHELL INTL (MKE)

RNP APCH.		MISSED APPROACH: Climb to 2900 direct CEXIS and hold.	
<p>▼ Rwy 31 helicopter visibility reduction below 3/4 SM NA. For uncompensated Baro-VNAV systems, LNAV/VNAV NA below -19°C or above 54°C.</p>			

D-ATIS <b>126.4</b>	MILWAUKEE APP CON <b>126.5 307.0</b>	MILWAUKEE TOWER <b>124.575 269.05</b>	GND CON <b>121.8 263.125</b>	CLNC DEL <b>120.8</b>	CPDLC
------------------------	---	--	---------------------------------	--------------------------	-------



ELEV 729	<b>D</b>	TDZE 670
----------	----------	----------



2900	CEXIS	DUSAY		
↑	✧	GERLE	2900	
*LNAV only		2300	2900	
*1.1 NM to RWY 31		2300	2900	
RWY 31		2300	2900	
1.1		3.9 NM	5.2 NM	
GP 3.00°	TCH 55			
CATEGORY	A	B	C	D
LPV DA	948-1		278 (300-1)	
LNAV/VNAV DA	1092-1¼		422 (400-1¼)	
LNAV MDA	1080-1	410 (400-1)	1080-1½	410 (400-1½)
<input checked="" type="checkbox"/> CIRCLING	1240-1	511 (600-1)	1240-1½	1360-2 631 (700-2)

EC-3, 28 NOV 2024 to 26 DEC 2024

EC-3, 28 NOV 2024 to 26 DEC 2024