

APP CRS	Rwy Idg	7867
256°	TDZE	683
	Apt Elev	729

RNAV (RNP) Y RWY 25L

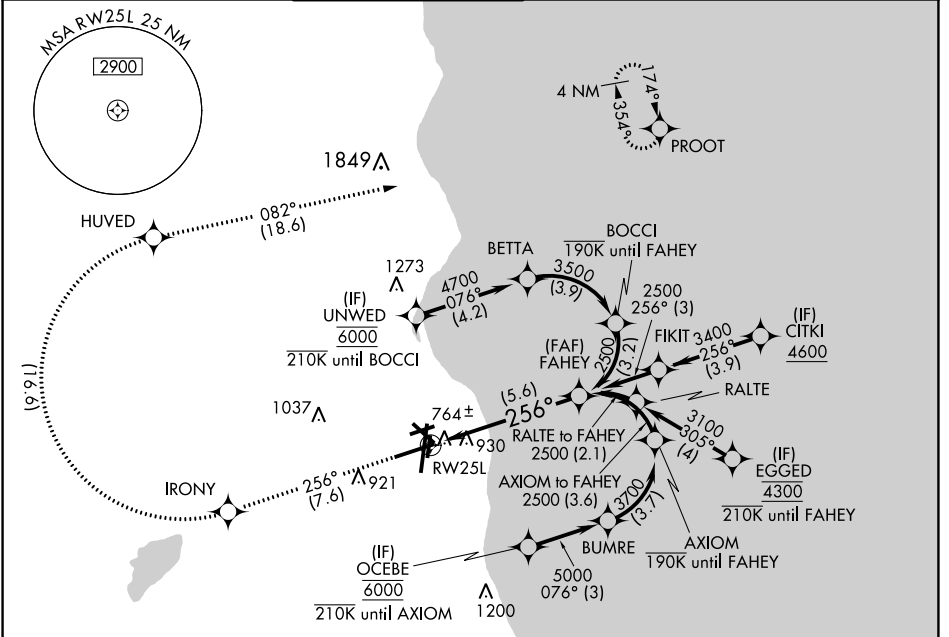
GENERAL MITCHELL INTL (MKE)

RF required. RNP AR APCH.

For uncompensated Baro-VNAV systems, procedure NA below -20°C or above 54°C.

MISSED APPROACH: Climb to 3700 on the RNAV missed approach route to PROOT and hold.

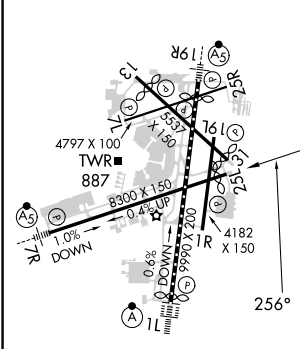
D-ATIS	MILWAUKEE APP CON	MILWAUKEE TOWER	GND CON	CLNC DEL	CPDLC
126.4	126.5 307.0	124.575 269.05	121.8 263.125	120.8	



EC-3, 28 NOV 2024 to 26 DEC 2024

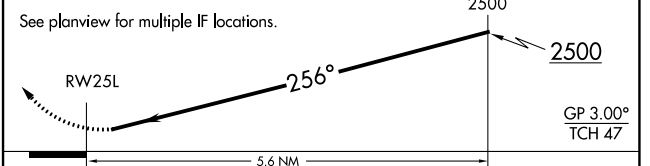
EC-3, 28 NOV 2024 to 26 DEC 2024

ELEV 729	D	TDZE 683
----------	----------	----------



TDZ/CL Rwy 1L
 REIL Rws 1R, 7L,
 13, 25R, 25L and 31
 HIRL Rws 1L-19R and 7R-25L
 MIRL Rws 1R-19L, 13-31 and 7L-25R

3700	IRONY	HUVED	PROOT
↑	◆	◆	◆



CATEGORY	A	B	C	D
RNP 0.10 DA		1087-1 ³ / ₈	404 (400-1 ³ / ₈)	
RNP 0.30 DA		1256-2	573 (600-2)	

AUTHORIZATION REQUIRED