

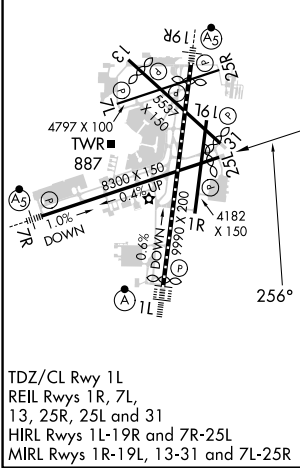
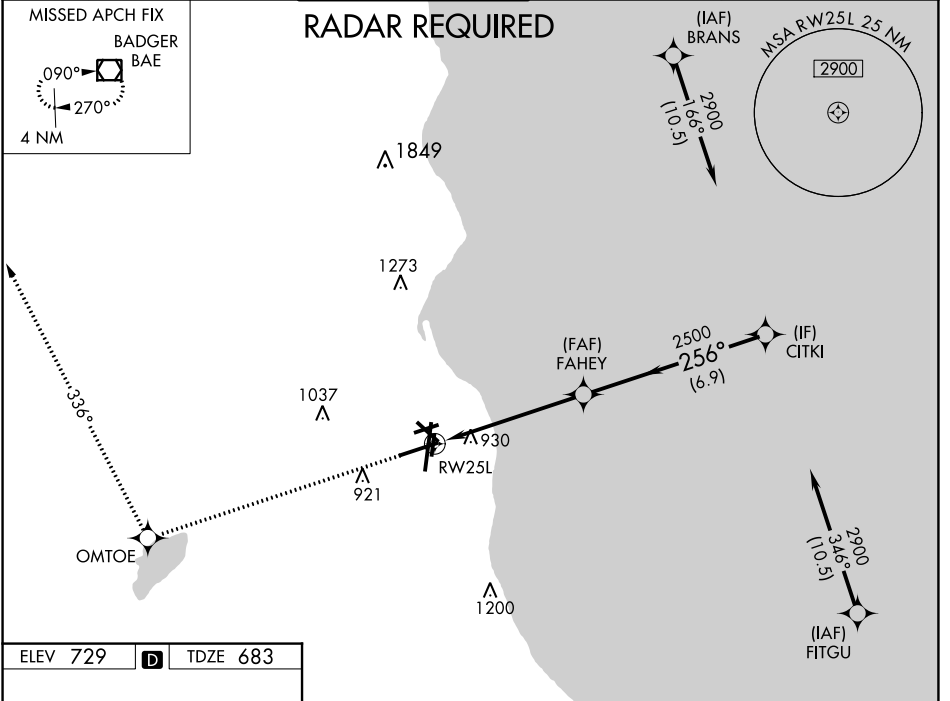
WAAS CH 62826 W25A	APP CRS 256°	Rwy Idg TDZE Apt Elev	7867 683 729
--	------------------------	-----------------------------	---

RNAV (GPS) Z RWY 25L

GENERAL MITCHELL INTL (MKE)

<p>▼ For uncompensated Baro-VNAV systems, LNAV/VNAV NA below -20°C (-4°F) or above 54°C (130°F). DME/DME RNP-0.3 NA. Helicopter visibility reduction below ¾ SM NA.</p>	<p>MISSED APPROACH: Climb to 2900 direct OMTOE and on track 336° to BAE VOR/DME and hold.</p>
---	---

D-ATIS 126.4	MILWAUKEE APP CON 126.5 307.0	MILWAUKEE TOWER 124.575 269.05	GND CON 121.8 263.125	CLNC DEL 120.8	CPDLC
------------------------	---	--	---------------------------------	--------------------------	-------



ELEV 729	D	TDZE 683				
2900	OMTOE	tr 336°	BAE	* LNAV only		
			FAHEY	CITKI	GP 3.00° TCH 47	
			2500	2500	2900	
			1.5	4.1 NM	6.9 NM	
CATEGORY	A	B	C	D		
LPV DA	973-1		290 (300-1)			
LNAV/VNAV DA	1262-2		579 (600-2)			
LNAV MDA	1180-1	497 (500-1)	1180-1½	497 (500-1½)		
C CIRCLING	1240-1	511 (600-1)	1240-1½	511 (600-1½)	1360-2	631 (700-2)

EC-3, 28 NOV 2024 to 26 DEC 2024

EC-3, 28 NOV 2024 to 26 DEC 2024