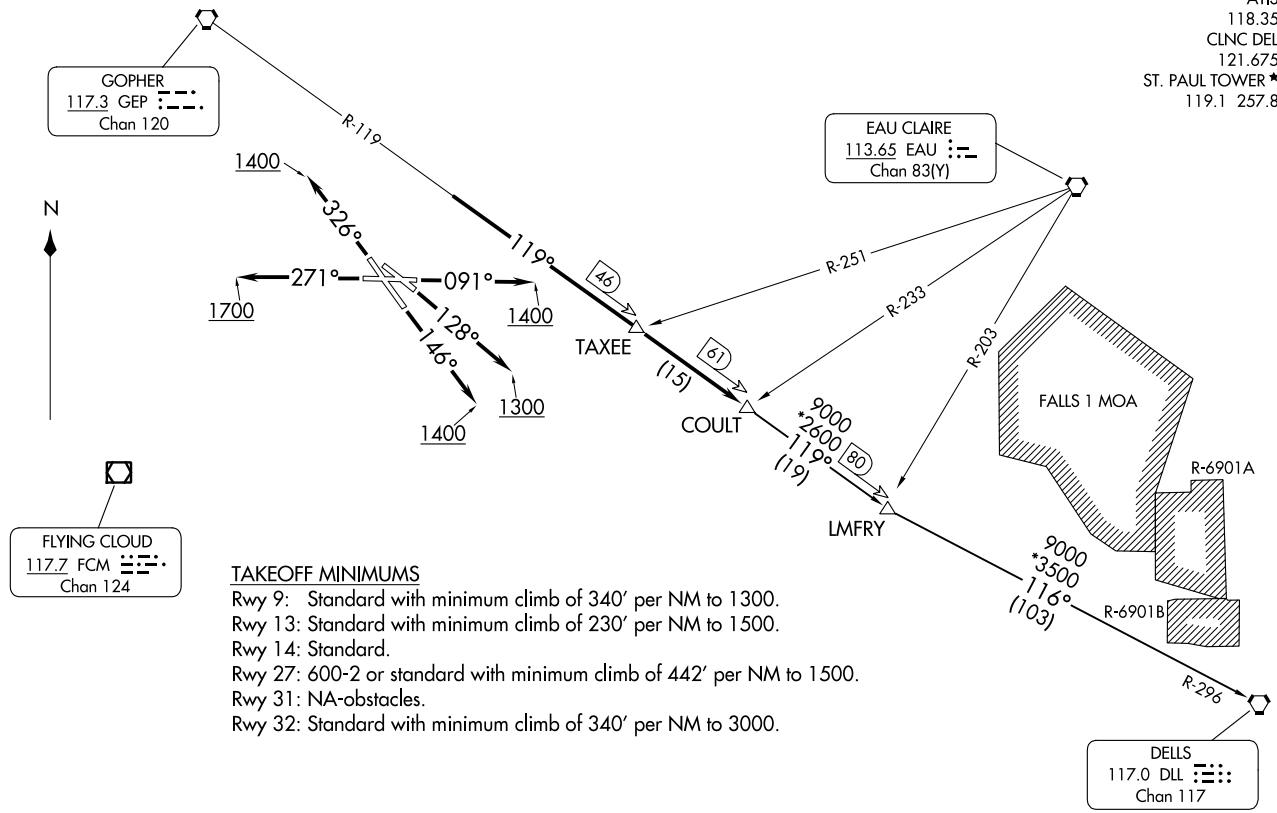


MINNEAPOLIS DEP CON  
 121.2 335.65  
 ATIS  
 118.35  
 CLNC DEL  
 121.675  
 ST. PAUL TOWER ★  
 119.1 257.8



**TAKEOFF MINIMUMS**  
 Rwy 9: Standard with minimum climb of 340' per NM to 1300.  
 Rwy 13: Standard with minimum climb of 230' per NM to 1500.  
 Rwy 14: Standard.  
 Rwy 27: 600-2 or standard with minimum climb of 442' per NM to 1500.  
 Rwy 31: NA-obstacles.  
 Rwy 32: Standard with minimum climb of 340' per NM to 3000.

NOTE: RADAR required.  
 NOTE: Chart not to scale.

(CONTINUED ON FOLLOWING PAGE)



DEPARTURE ROUTE DESCRIPTION

TAKEOFF RUNWAY 9: Climb heading 091° to 1400 for RADAR vectors to intercept GEP R-119 to COULT INT/GEP 61 DME, thence . . . .

TAKEOFF RUNWAY 13: Climb heading 128° to 1300 for RADAR vectors to intercept GEP R-119 to COULT INT/GEP 61 DME, thence . . . .

TAKEOFF RUNWAY 14: Climb heading 146° to 1400 for RADAR vectors to intercept GEP R-119 to COULT INT/GEP 61 DME, thence . . . .

TAKEOFF RUNWAY 27: Climb heading 271° to 1700 for RADAR vectors to intercept GEP R-119 to COULT INT/GEP 61 DME, thence . . . .

TAKEOFF RUNWAY 32: Climb heading 326° to 1400 for RADAR vectors to intercept GEP R-119 to COULT INT/GEP 61 DME, thence . . . .

. . . . on transition or assigned route. Expect clearance to filed altitude/flight level 10 (ten) minutes after departure.

DELLS TRANSITION (COULT7.DLL): From over COULT INT on GEP R-119 to LMFY INT then on DLL R-296 to DLL VORTAC.

NC-1, 28 NOV 2024 to 26 DEC 2024

NC-1, 28 NOV 2024 to 26 DEC 2024