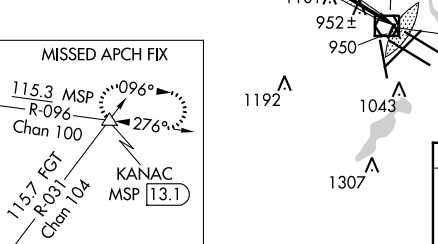
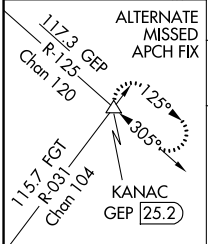
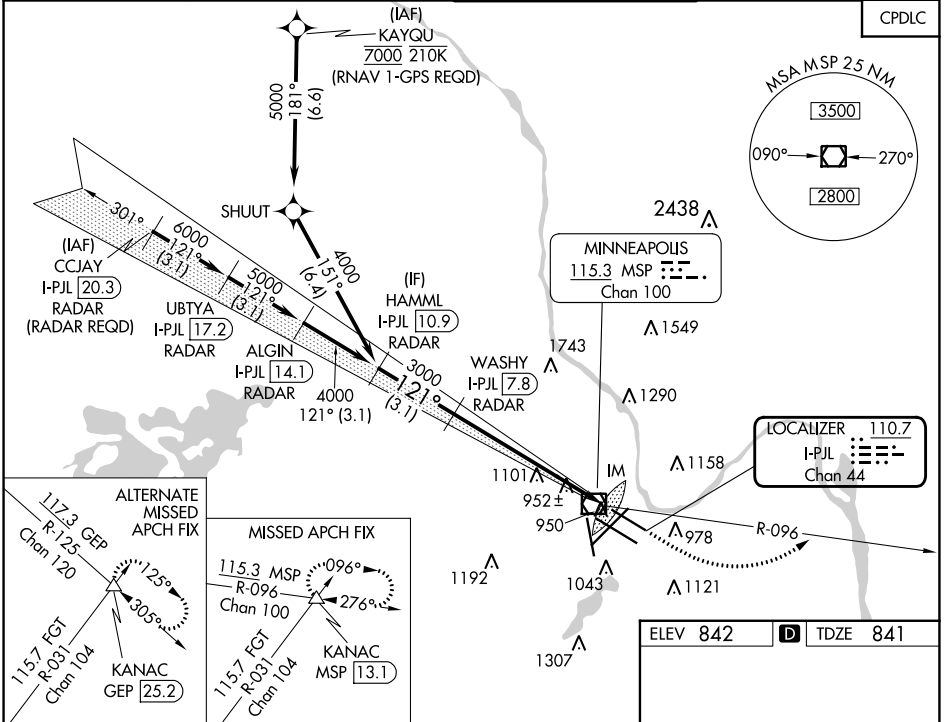


LOC/DME I-PJL <b>110.7</b> Chan <b>44</b>	APP CRS <b>121°</b>	Rwy Idg TDZE Apt Elev	<b>7620</b> <b>841</b> <b>842</b>
---	------------------------	-----------------------------	---

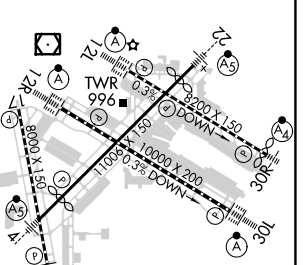
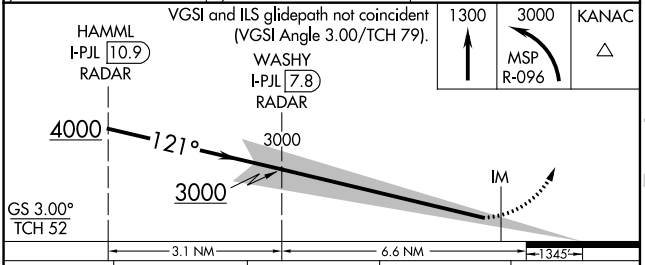
# ILS RWY 12L (SA CAT I)

## MINNEAPOLIS-ST PAUL INTL/WOLD-CHAMBERLAIN (MSP)

<b>⚠</b> Simultaneous approach authorized with Rwy 12R. Requires specific OPSPEC, MSPEC, or LOA approval and use of HUD to DH. DME or RADAR required.	<b>⚠</b> MISSED APPROACH: Climb to 1300, then climbing left turn to 3000 on MSP VOR/DME R-096 to KANAC INT/MSP 13.1 DME and hold.	ALSF-2		
		ARR <b>135.35</b> <b>239.275</b>	MINNEAPOLIS APP CON <b>118.725 335.65</b> (Rwy 35) <b>119.3 335.65</b> (12L-30R, 4-22, 17) <b>126.95 335.65</b> (12R-30L)	MINNEAPOLIS TOWER <b>123.675 273.55</b> (17-35) <b>123.95 273.55</b> (12L-30R) <b>126.7 273.55</b> (12R-30L, 4-22)



ELEV 842	<b>D</b> TDZE 841
----------	-------------------



CATEGORY	A	B	C	D
S-ILS 12L	RA 147/14 150 DA 991			

**SA CATEGORY I ILS - SPECIAL AIRCREW & AIRCRAFT CERTIFICATION REQUIRED**

HIRL all Rwys  
REIL Rwy 17  
TDZ/CL Rwys 12L, 12R, 30L, and 35

NC-1, 28 NOV 2024 to 26 DEC 2024

NC-1, 28 NOV 2024 to 26 DEC 2024