

| | | |
|---|------------------------|--|
| LOC/DME I-HKZ 110.3 Chan 40 | APP CRS 121° | Rwy Idg 10000 TDZE 842 Apt Elev 842 |
|---|------------------------|--|

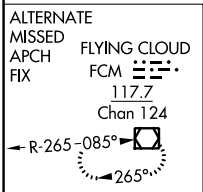
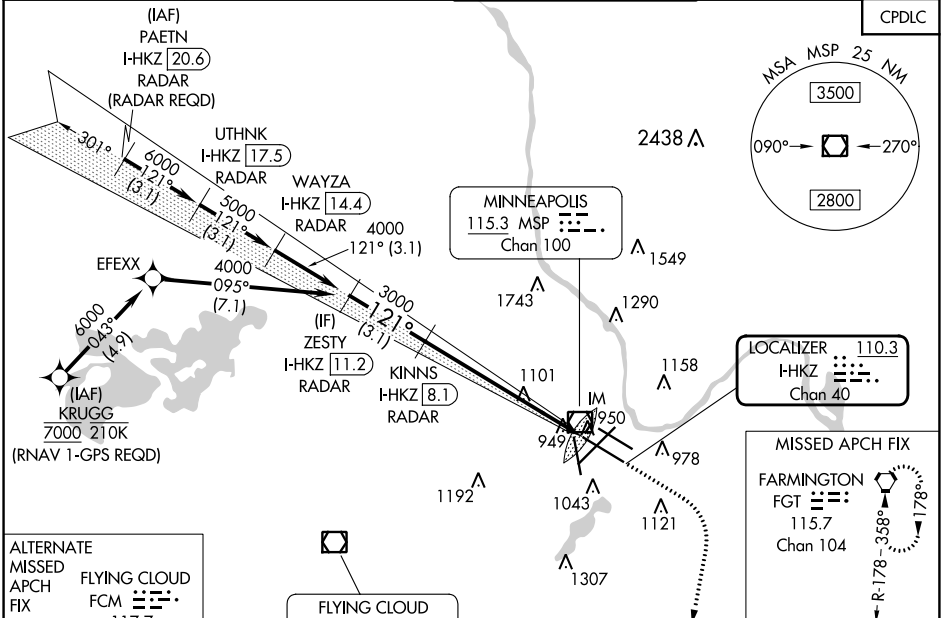
ILS RWY 12R (CAT II & III)

MINNEAPOLIS-ST PAUL INTL/WOLD-CHAMBERLAIN (MSP)

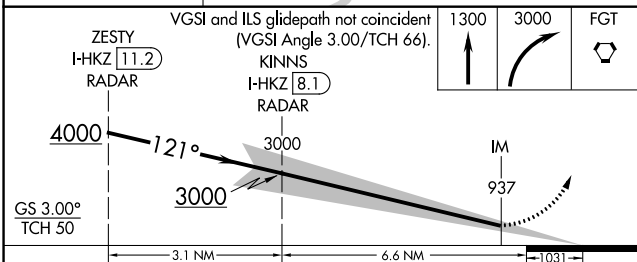
⚠ DME or RADAR required. Simultaneous approach authorized with Rwy 12L.
⚠ CAT II: RVR 1000 authorized with specific OPSPEC, MSPEC, or LOA approval and use of autoland or HUD to touchdown.

ALSF-2
 MISSED APPROACH: Climb to 1300 then climbing right turn to 3000 direct FGT VORTAC and hold.

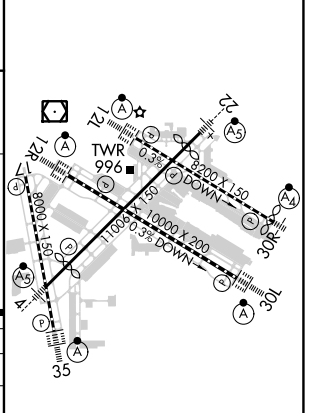
| | | | | |
|---|--|---|---|--------------------------|
| D-ATIS ARR 135.35 239.275 DEP 120.8 | MINNEAPOLIS APP CON 118.725 335.65 (Rwy 35) 119.3 335.65 (12L-30R, 4-22, 17) 126.95 335.65 (12R-30L) | MINNEAPOLIS TOWER 123.675 273.55 (17-35) 123.95 273.55 (12L-30R) 126.7 273.55 (12R-30L, 4-22) | GND CON N 121.8 348.6 S 121.9 348.6 W 127.925 348.6 | CLNC DEL 133.2 |
|---|--|---|---|--------------------------|



| | |
|----------|-------------------|
| ELEV 842 | D TDZE 842 |
|----------|-------------------|



| | | | | |
|-----------|-----------------------------|---|---|---|
| CATEGORY | A | B | C | D |
| S-ILS 12R | CAT II RA 102/12 100 DA 942 | | | |
| S-ILS 12R | CAT III RVR 06 | | | |



CATEGORY II & III ILS - SPECIAL AIRCREW & AIRCRAFT CERTIFICATION REQUIRED

HIRL all Rwys
 REIL Rwy 17
 TDZ/CL Rwys 12L, 12R, 30L, and 35

NC-1, 28 NOV 2024 to 26 DEC 2024

NC-1, 28 NOV 2024 to 26 DEC 2024