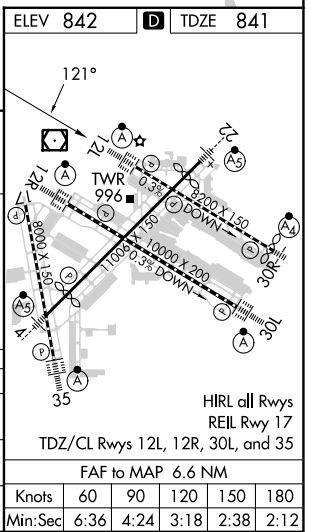
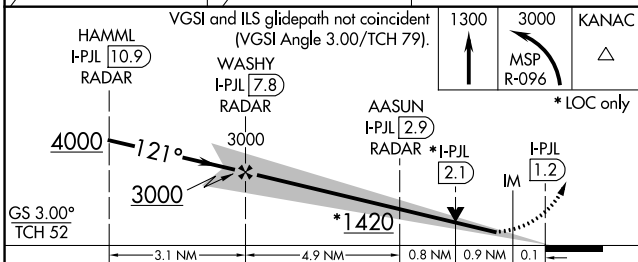
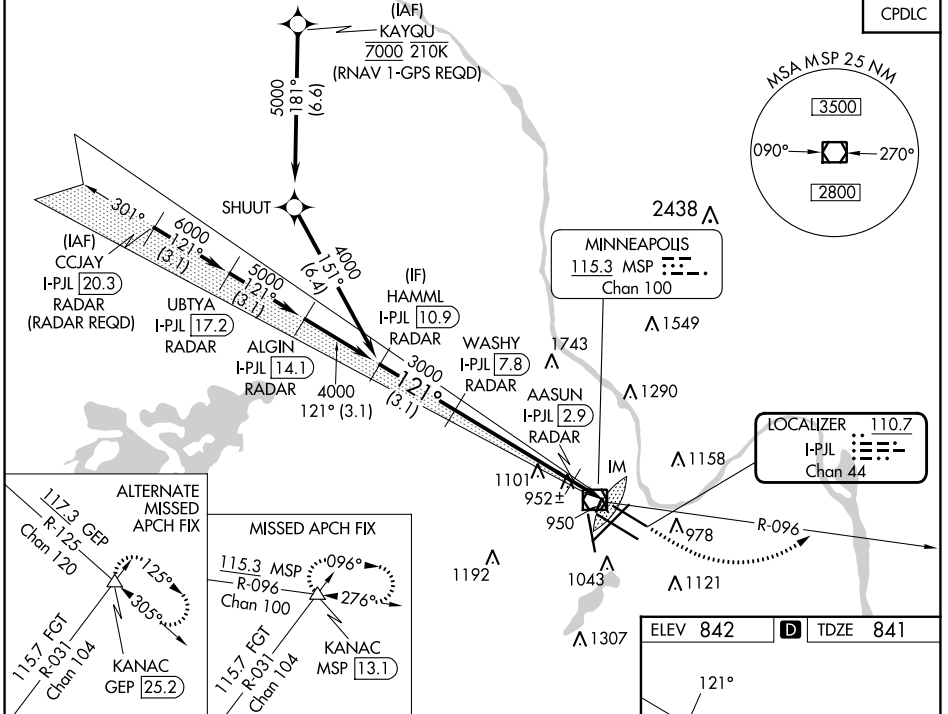


LOC/DME I-PJL <b>110.7</b> Chan <b>44</b>	APP CRS <b>121°</b>	Rwy Idg TDZE Apt Elev	<b>7620</b> <b>841</b> <b>842</b>
---	------------------------	-----------------------------	---

# ILS or LOC RWY 12L

## MINNEAPOLIS-ST PAUL INTL/WOLD-CHAMBERLAIN (MSP)

<b>⚠</b> Simultaneous approach authorized with Rwy 12R. For inop ALS, increase S-ILS 12L Cat E visibility to RVR 4000, S-LOC 12L Cat C/D/E visibility to RVR 5500. DME or RADAR required.	MINNEAPOLIS APP CON <b>118.725 335.65</b> (Rwy 35) <b>119.3 335.65</b> (12L-30R, 4-22, 17) <b>126.95 335.65</b> (12R-30L)		MINNEAPOLIS TOWER <b>123.675 273.55</b> (17-35) <b>123.95 273.55</b> (12L-30R) <b>126.7 273.55</b> (12R-30L, 4-22)		GND CON <b>N 121.8 348.6</b> <b>S 121.9 348.6</b> <b>W 127.925 348.6</b>	CLNC DEL <b>133.2</b>
	D-ATIS ARR <b>135.35 239.275</b> DEP <b>120.8</b>		ALSF-2 		MISSED APPROACH: Climb to 1300, then climbing left turn to 3000 on MSP VOR/DME R-096 to KANAC INT/MSP 13.1 DME and hold.	



ELEV 842	<b>D</b> TDZE 841
CATEGORY A B C D E S-ILS 12L 1041/18 200 (200-½) S-LOC 12L 1220/24 379 (400-½) 1220/35 379 (400-¾) <b>C</b> CIRCLING 1360-1 518 (600-1) 1460-1¾ 1660-2¾ 1800-3 618 (700-1¾) 818 (900-2¾) 958 (1000-3)	
HIRL all Rwy REIL Rwy 17 TDZ/CL Rwy 12L, 12R, 30L, and 35 FAF to MAP 6.6 NM	
Knots 60 90 120 150 180 Min:Sec 6:36 4:24 3:18 2:38 2:12	

# ILS or LOC RWY 12L

NC-1, 28 NOV 2024 to 26 DEC 2024

NC-1, 28 NOV 2024 to 26 DEC 2024