

LOC/DME I-HKZ <b>110.3</b> Chan <b>40</b>	APP CRS <b>121°</b>	Rwy Idg <b>10000</b> TDZE <b>842</b> Apt Elev <b>842</b>
---	------------------------	--

# ILS or LOC RWY 12R

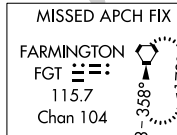
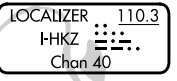
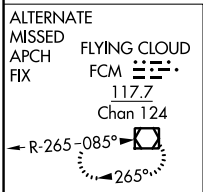
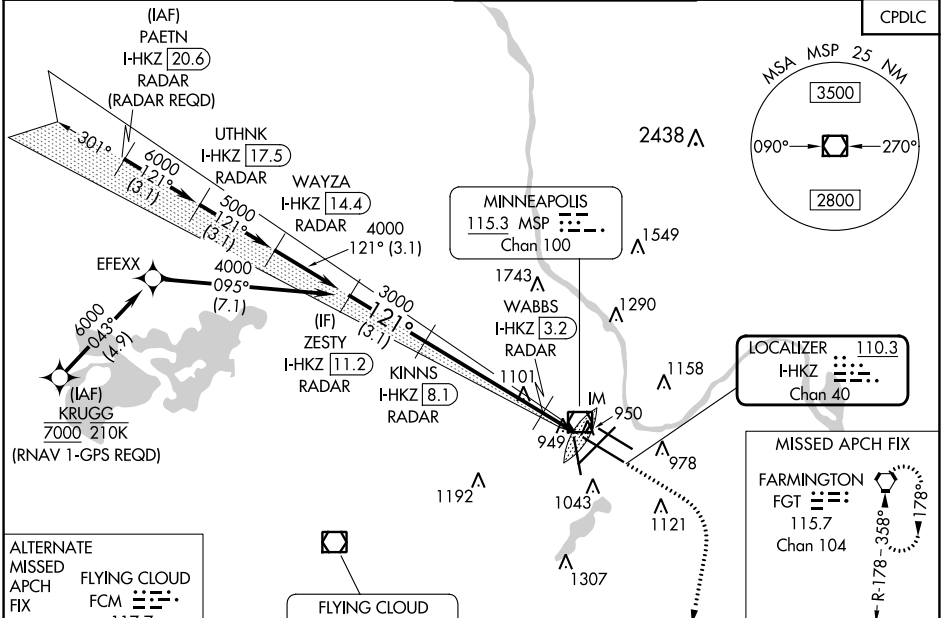
## MINNEAPOLIS-ST PAUL INTL/WOLD-CHAMBERLAIN (MSP)

**⚠** DME or RADAR required. For inop ALS, increase S-ILS 12R Cat E visibility to RVR 4000, and S-LOC 12R Cat E visibility to RVR 6000. Simultaneous approach authorized with Rwy 12L.

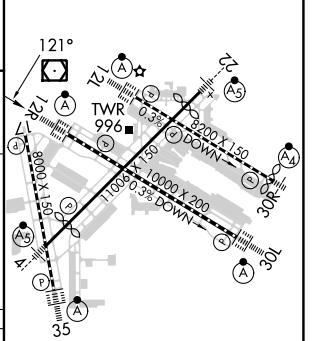
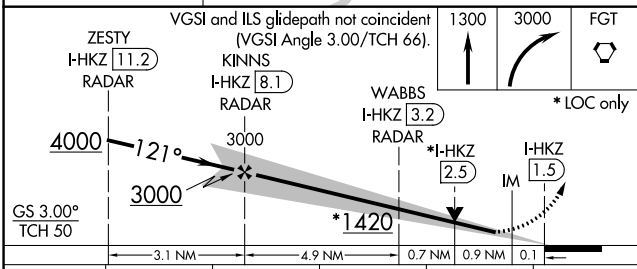
**ALSF-2**

**MISSED APPROACH:** Climb to 1300 then climbing right turn to 3000 direct FGT VORTAC and hold.

D-ATIS ARR <b>135.35 239.275</b> DEP <b>120.8</b>	MINNEAPOLIS APP CON <b>118.725 335.65</b> (Rwy 35) <b>119.3 335.65</b> (12L-30R, 4-22, 17) <b>126.95 335.65</b> (12R-30L)	MINNEAPOLIS TOWER <b>123.675 273.55</b> (17-35) <b>123.95 273.55</b> (12L-30R) <b>126.7 273.55</b> (12R-30L, 4-22)	GND CON <b>N 121.8 348.6</b> <b>S 121.9 348.6</b> <b>W 127.925 348.6</b>	CLNC DEL <b>133.2</b>
---	--	---	---	--------------------------



ELEV 842	<b>D</b> TDZE 842
----------	-------------------



CATEGORY	A	B	C	D	E
S-ILS 12R	1042/18 200 (200-½)				
S-LOC 12R	1240/24 398 (400-½)	1240/35 398 (400-¾)			
<b>C</b> CIRCLING	1360-1 518 (600-1)	1460-1¾ 618 (700-1¾)	1660-2¾ 818 (900-2¾)	1800-3 958 (1000-3)	

HIRL all Rwys  
REIL Rwy 17  
TDZ/CL Rwy 12L, 12R, 30L, and 35  
FAF to MAP 6.6 NM

Knots	60	90	120	150	180
Min:Sec	6:36	4:24	3:18	2:38	2:12

# ILS or LOC RWY 12R

NC-1, 28 NOV 2024 to 26 DEC 2024

NC-1, 28 NOV 2024 to 26 DEC 2024