

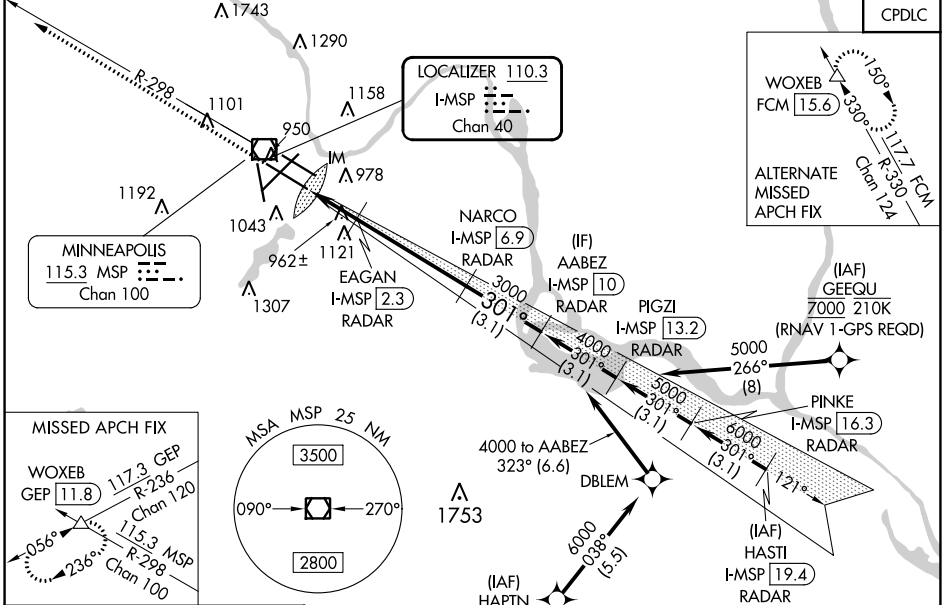
LOC/DME I-MSP 110.3 Chan 40	APP CRS 301°	Rwy Idg TDZE 823 Apt Elev 842	10000
---	------------------------	---	--------------

ILS or LOC RWY 30L

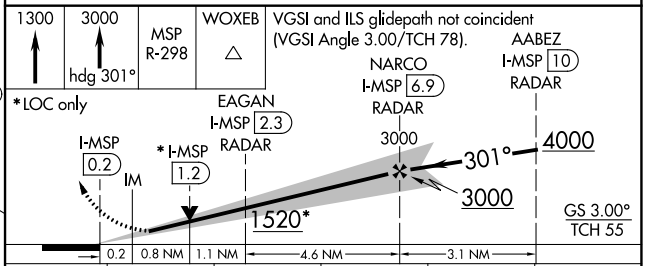
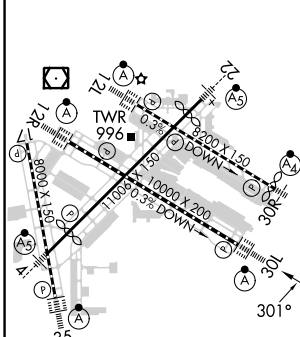
MINNEAPOLIS-ST PAUL INTL/WOLD-CHAMBERLAIN (MSP)

<p>▼ DME or RADAR required. Simultaneous approaches authorized with Rwy 30R and ILS V RWY 35 (CONVERGING). For inop ALS, increase S-ILS 30L Cat E visibility to RVR 4000, and increase S-LOC 30L Cat E visibility to RVR 6000.</p>	<p>ALS-F-2 A</p>	<p>MISSED APPROACH: Climb to 1300 then climb to 3000 on heading 301° and MSP VOR/DME R-298 to WOXEB INT/ GEP VORTAC 11.8 DME and hold.</p>
---	-----------------------------	--

D-ATIS ARR 135.35 239.275 DEP 120.8	MINNEAPOLIS APP CON 118.725 335.65 (Rwy 35) 119.3 335.65 (12L-30R, 4-22, 17) 126.95 335.65 (12R-30L)	MINNEAPOLIS TOWER 123.675 273.55 (17-35) 123.95 273.55 (12L-30R) 126.7 273.55 (12R-30L, 4-22)	GND CON N 121.8 348.6 S 121.9 348.6 W 127.925 348.6	CLNC DEL 133.2
---	--	---	---	--------------------------



ELEV 842	D	TDZE 823
-----------------	----------	-----------------



CATEGORY	A	B	C	D	E
S-ILS 30L	1023/18 200 (200-½)				
S-LOC 30L	1220/24	397 (400-½)	1220/35 397 (400-¾)		
C CIRCLING	1360-1	518 (600-1)	1460-1¾	1660-2¾	1800-3

ILS or LOC RWY 30L

NC-1, 28 NOV 2024 to 26 DEC 2024

NC-1, 28 NOV 2024 to 26 DEC 2024