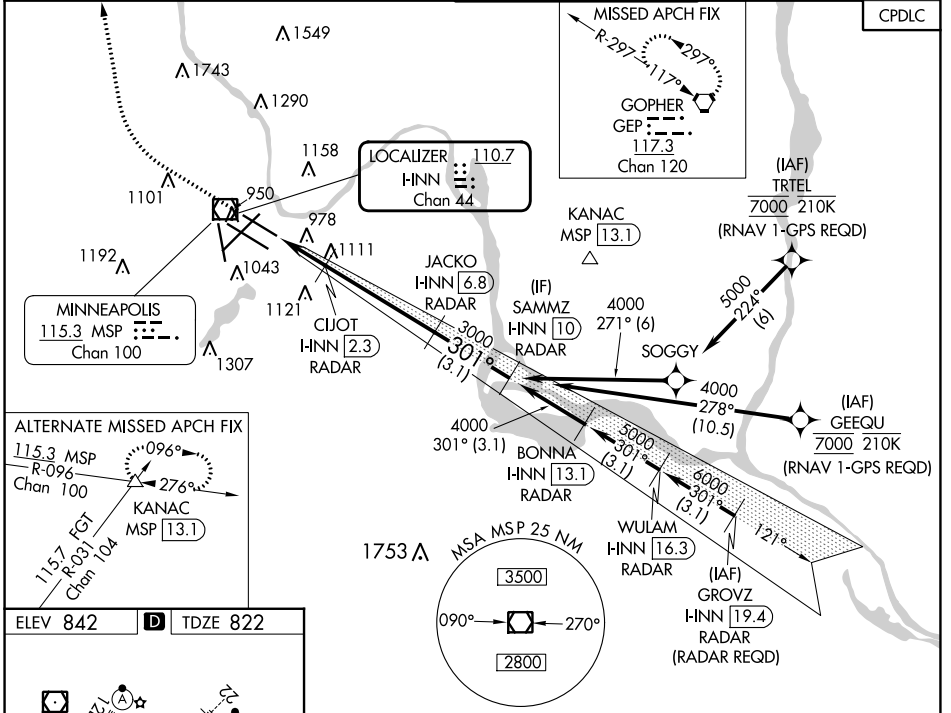


LOC/DME I-HINN 110.7 Chan 44	APP CRS 301°	Rwy Idg TDZE Apt Elev	8000 822 842
---	------------------------	-----------------------------	---

ILS or LOC RWY 30R

MINNEAPOLIS-ST PAUL INTL/WOLD-CHAMBERLAIN (MSP)

⚠ Simultaneous approaches authorized with Rwy 30L and ILS V RWY 35 (CONVERGING). For inop ALS, increase S-LOC 30R Cat D/E visibility to 1 3/8 SM. Inop table does not apply to S-ILS 30R all Cats. DME or RADAR required.	MAJLF 	MISSED APPROACH: Climb to 1300, then climbing right turn to 3000 direct GEP VORTAC and hold.	CLNC DEL 133.2



ELEV 842	D	TDZE 822			
HIRL all Rwys REIL Rwy 17 TDZ/CL Rwys 12L, 12R, 30L, and 35 FAF to MAP 6.7 NM					
Knots	60	90	120	150	180
Min:Sec	6:42	4:28	3:21	2:41	2:14

1300 *LOC only	3000 	GEP 	VGSi and ILS glidepath not coincident (VGSi Angle 3.00/TCH 71).	JACKO I-HINN [6.8] RADAR	SAMMZ HINN [10] RADAR
CIJOT I-HINN [2.3] RADAR		3000 4000 301°		GS 3.00° TCH 55	
HINN [0.2] *I-HINN [1.5]		1520*		1.3 NM 0.8 NM 4.6 NM 3.1 NM	
CATEGORY	A	B	C	D	E
S-ILS 30R	1072/40 250 (300-3/4)				
S-LOC 30R	1320/40 498 (500-3/4)	1320/60 498 (500-1 1/4)			
C CIRCLING	1360-1 518 (600-1)	1460-1 3/4 618 (700-1 1/4)	1660-2 3/4 818 (900-2 3/4)	1800-3 958 (1000-3)	

NC-1, 28 NOV 2024 to 26 DEC 2024

NC-1, 28 NOV 2024 to 26 DEC 2024