

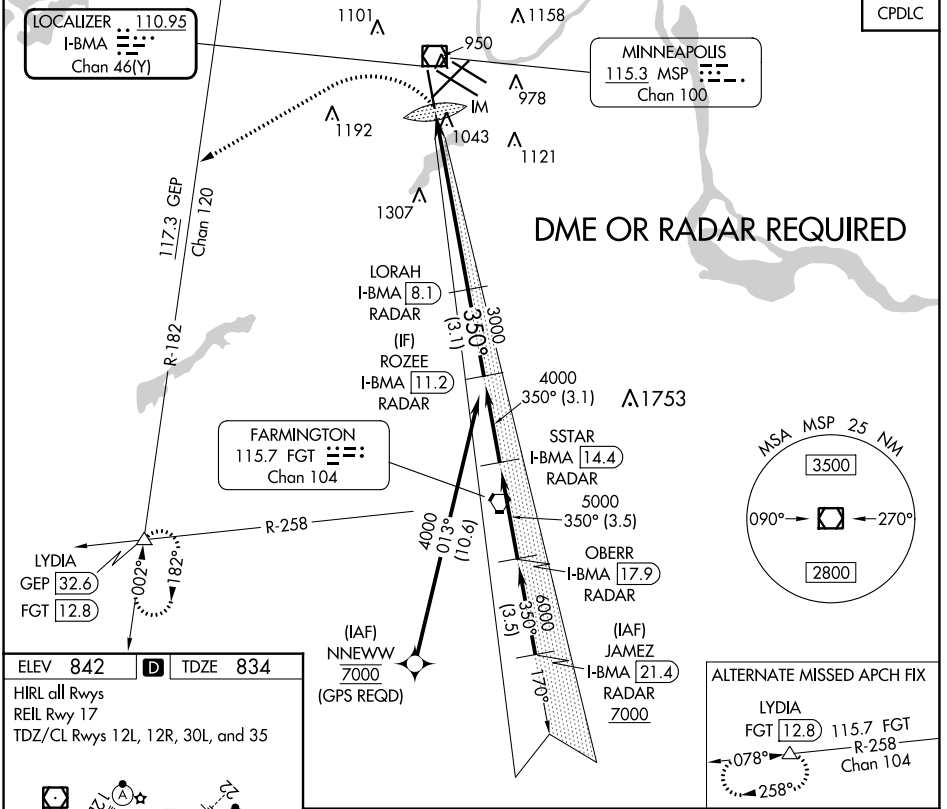
LOC/DME I-BMA <b>110.95</b> Chan <b>46 (Y)</b>	APP CRS <b>350°</b>	Rwy ldg TDZE Apt Elev	<b>8000</b> <b>834</b> <b>842</b>
--	------------------------	-----------------------------	---

# ILS V RWY 35 (CONVERGING)

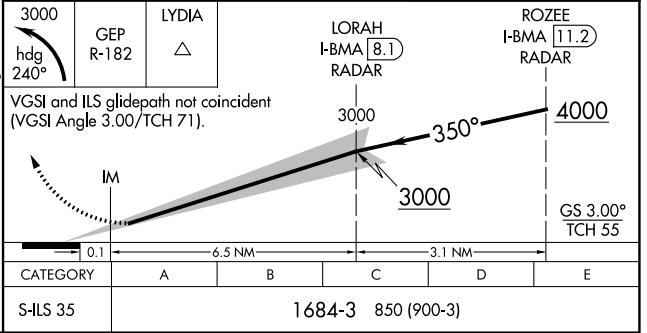
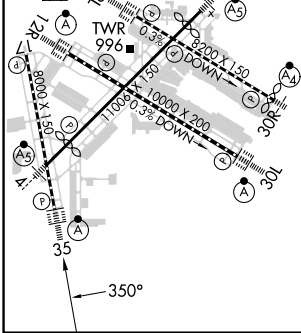
MINNEAPOLIS-ST PAUL INTL/WOLD-CHAMBERLAIN (MSP)

<p><b>▽</b> Inop table does not apply.</p> <p><b>△NA</b> No autoland on ILS V RWY 35 (CONVERGING). Simultaneous approach authorized.</p>	<p>ALSF-2</p> <p><b>MISSED APPROACH:</b> Climbing left turn to 3000 on heading 240° and on GEP VORTAC R-182 to LYDIA INT/GEOP 32.6 DME and hold.</p>
--	--

D-ATIS ARR <b>135.35 239.275</b> DEP <b>120.8</b>	MINNEAPOLIS APP CON <b>118.725 335.65</b> (Rwy 35) <b>119.3 335.65</b> (12L-30R, 4-22, 17) <b>126.95 335.65</b> (12R-30L)	MINNEAPOLIS TOWER <b>123.675 273.55</b> (17-35) <b>123.95 273.55</b> (12L-30R) <b>126.7 273.55</b> (12R-30L, 4-22)	GND CON <b>N 121.8 348.6</b> <b>S 121.9 348.6</b> <b>W 127.925 348.6</b>	CLNC DEL <b>133.2</b>
---	--	---	---	--------------------------



ELEV 842	<b>D</b>	TDZE 834
HIRL all Rwys REL Rwy 17 TDZ/CL Rwys 12L, 12R, 30L, and 35		



NC-1, 28 NOV 2024 to 26 DEC 2024

NC-1, 28 NOV 2024 to 26 DEC 2024