

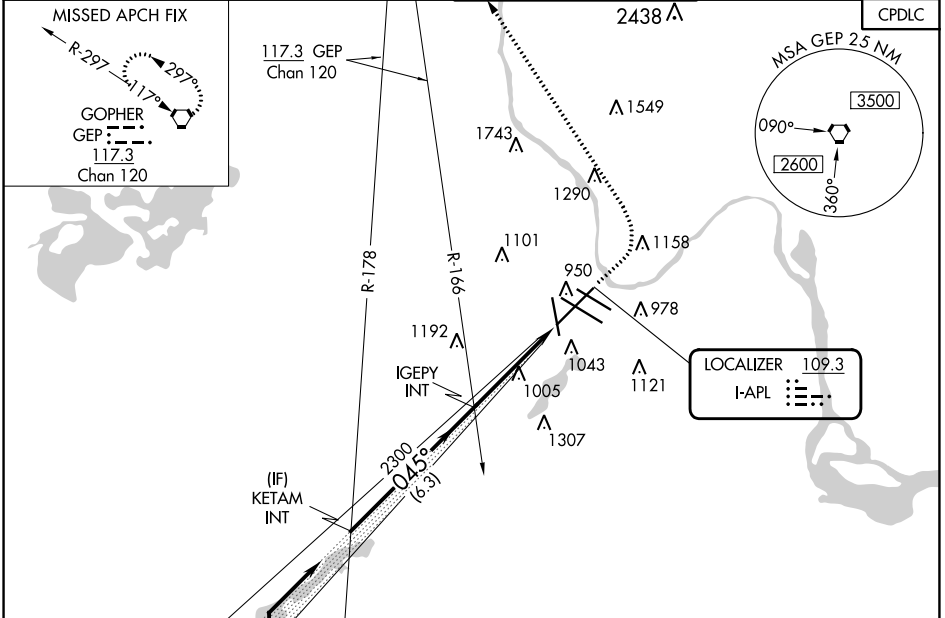
LOC I-APL 109.3	APP CRS 045°	Rwy Idg 9456
		TDZE 832
		Apt Elev 842

LOC RWY 4

MINNEAPOLIS-ST PAUL INTL/WOLD-CHAMBERLAIN (MSP)

<p>For inop ALS, increase S-4 Cat C/D/E visibility to 1 3/8 SM.</p>		<p>MISSED APPROACH: Climb to 1500 then climbing left turn to 3000 direct GEP VORTAC and hold.</p>

D-ATIS ARR 135.35 239.275 DEP 120.8	MINNEAPOLIS APP CON 118.725 335.65 (Rwy 35) 119.3 335.65 (12L-30R, 4-22, 17) 126.95 335.65 (12R-30L)	MINNEAPOLIS TOWER 123.675 273.55 (17-35) 123.95 273.55 (12L-30R) 126.7 273.55 (12R-30L, 4-22)	GND CON N 121.8 348.6 S 121.9 348.6 W 127.925 348.6	CLNC DEL 133.2
---	--	---	---	--------------------------



VGSI and descent angles not coincident (VGSI Angle 3.00/TCH 76).

KETAM INT

4000

045°

2300

3.00° TCH 55

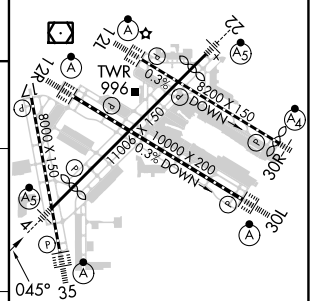
IGEPY INT

6.3 NM

4.4 NM

ELEV 842	D TDZE 832
----------	-------------------

HIRL all Rwys
REIL Rwy 17
TDZ/CL Rwys 12L, 12R, 30L, and 35



CATEGORY	A	B	C	D	E
S-4	1340/24	508 (500-1/2)	1340/55	508 (500-1)	
C CIRCLING	1360-1	518 (600-1)	1460-1 3/4 618 (700-13/4)	1660-2 3/4 818 (900-23/4)	1800-3 958 (1000-3)

FAF to MAP 4.4 NM					
Knots	60	90	120	150	180
Min:Sec	4:24	2:56	2:12	1:46	1:28

LOC RWY 4

NC-1, 28 NOV 2024 to 26 DEC 2024

NC-1, 28 NOV 2024 to 26 DEC 2024