

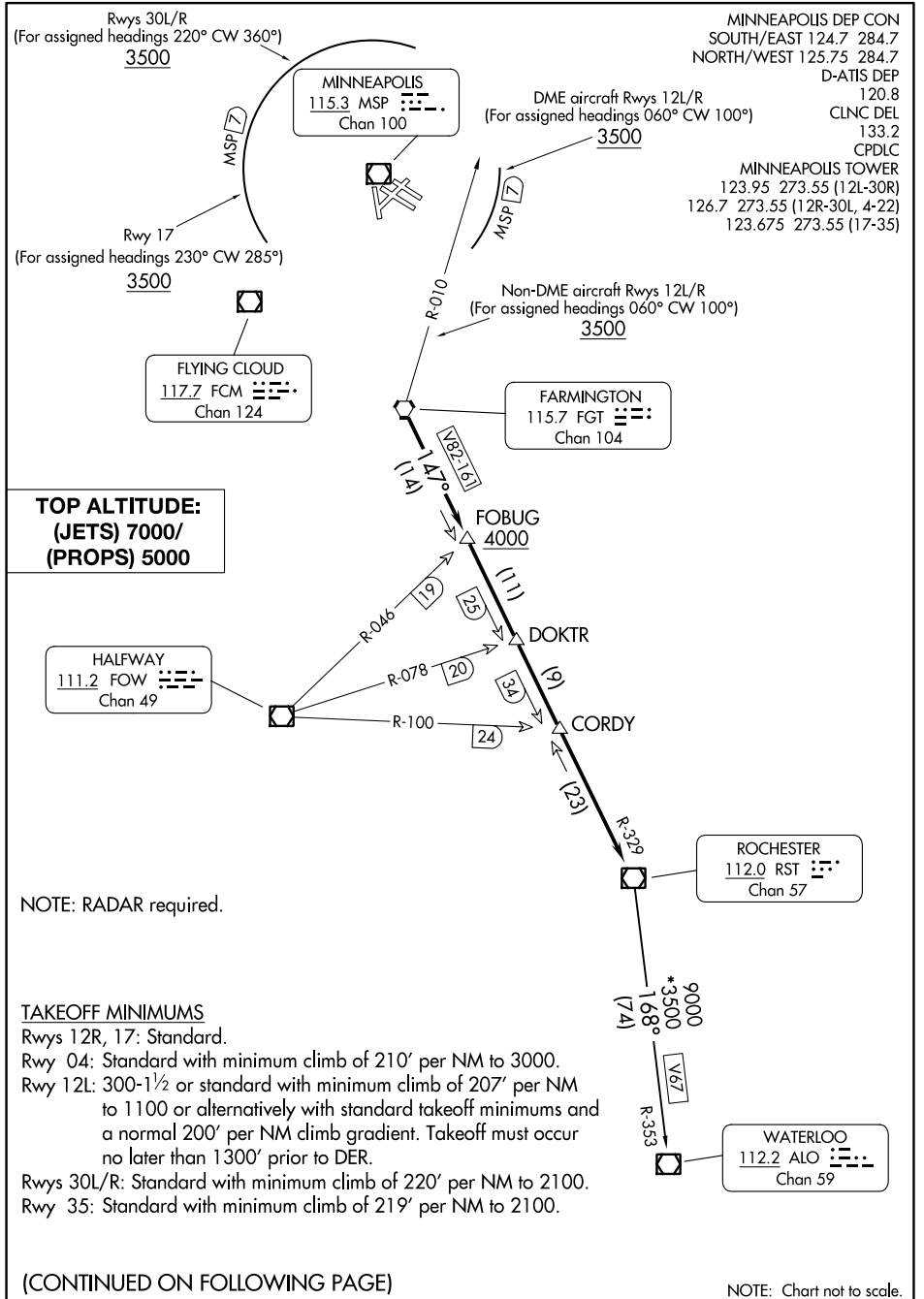
(RST1 .RST) 23334

MINNEAPOLIS-ST PAUL INTL/WOLD-CHAMBERLAIN (MSP)

# ROCHESTER ONE DEPARTURE

AL-264 (FAA)

MINNEAPOLIS, MINNESOTA



**TOP ALTITUDE:  
(JETS) 7000/  
(PROPS) 5000**

HALFWAY  
111.2 FOW  
Chan 49

MINNEAPOLIS  
115.3 MSP  
Chan 100

FLYING CLOUD  
117.7 FCM  
Chan 124

FARMINGTON  
115.7 FGT  
Chan 104

MINNEAPOLIS DEP CON  
 SOUTH/EAST 124.7 284.7  
 NORTH/WEST 125.75 284.7  
 D-ATIS DEP 120.8  
 CLNC DEL 133.2  
 CPDLC  
 MINNEAPOLIS TOWER  
 123.95 273.55 (12L-30R)  
 126.7 273.55 (12R-30L, 4-22)  
 123.675 273.55 (17-35)

NOTE: RADAR required.

### TAKEOFF MINIMUMS

Rwys 12R, 17: Standard.  
 Rwy 04: Standard with minimum climb of 210' per NM to 3000.  
 Rwy 12L: 300-1½ or standard with minimum climb of 207' per NM to 1100 or alternatively with standard takeoff minimums and a normal 200' per NM climb gradient. Takeoff must occur no later than 1300' prior to DER.  
 Rwys 30L/R: Standard with minimum climb of 220' per NM to 2100.  
 Rwy 35: Standard with minimum climb of 219' per NM to 2100.

(CONTINUED ON FOLLOWING PAGE)

NOTE: Chart not to scale.

# ROCHESTER ONE DEPARTURE

MINNEAPOLIS, MINNESOTA

(RST1 .RST) 13SEP18

MINNEAPOLIS-ST PAUL INTL/WOLD-CHAMBERLAIN (MSP)

NC-1, 28 NOV 2024 to 26 DEC 2024

NC-1, 28 NOV 2024 to 26 DEC 2024



DEPARTURE ROUTE DESCRIPTION

TAKEOFF ALL RUNWAYS: Fly assigned heading for RADAR vectors to FGT VORTAC and then on FGT R-147 and RST R-329 to RST VOR/DME. Cross FOBUG INT/FGT 14 DME at or above 4000. Turbojet aircraft maintain 7000 or lower assigned altitude. All other aircraft maintain 5000 or lower assigned altitude.

DME EQUIPPED AIRCRAFT RUNWAYS 12L/R DEPARTURES: For assigned headings from 060° clockwise to 100°, cross MSP 7 DME at or above 3500, maintain assigned altitude. If unable to comply, advise ATC as soon as possible prior to departure, thence . . . .

NON-DME EQUIPPED AIRCRAFT RUNWAYS 12L/R DEPARTURES: For assigned headings from 060° clockwise to 100°, cross FGT R-010 at or above 3500, maintain assigned altitude. If unable to comply, advise ATC as soon as possible prior to departure, thence. . . .

TAKEOFF RUNWAYS 4, 22, 35: Initially assigned heading, thence . . . .

TAKEOFF RUNWAY 17: For assigned headings from 230° clockwise to 285° cross MSP 7 DME at or above 3500, maintain assigned altitude. If unable to comply, advise ATC as soon as possible prior to departure, thence . . . .

TAKEOFF RUNWAYS 30L/R: For assigned headings from 220° clockwise to 360° cross MSP 7 DME at or above 3500, maintain assigned altitude. If unable to comply, advise ATC as soon as possible prior to departure, thence . . . .

. . . .on assigned transition or assigned route. Expect clearance to filed altitude/flight level 10 (ten) minutes after departure.

WATERLOO TRANSITION (RST1.ALO): From over RST VOR/DME on RST R-168 and ALO R-353 to ALO VOR/DME.

NC-1, 28 NOV 2024 to 26 DEC 2024

NC-1, 28 NOV 2024 to 26 DEC 2024