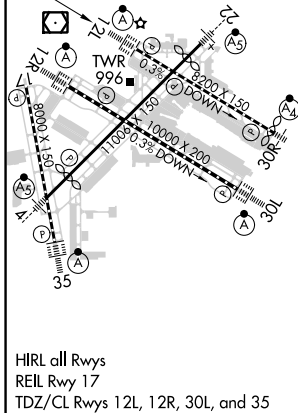
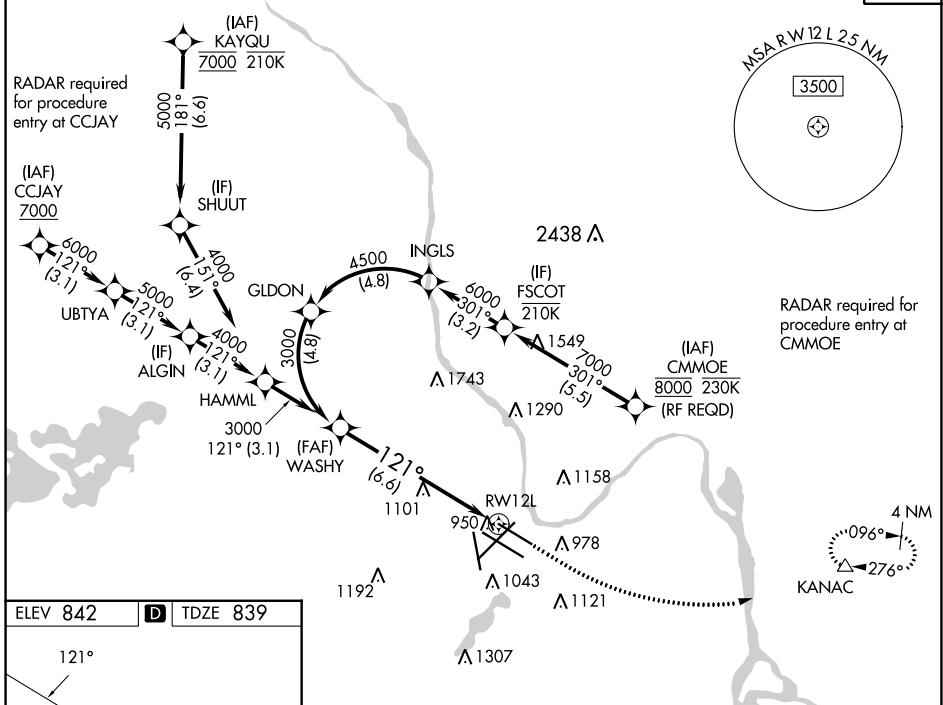


APP CRS	Rwy Idg	7620
121°	TDZE	839
	Apt Elev	842

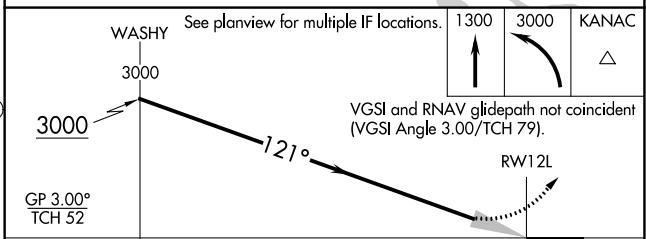
RNAV (RNP) Y RWY 12L

MINNEAPOLIS-ST PAUL INTL/WOLD-CHAMBERLAIN (MSP)

▽ For uncompensated Baro-VNAV systems, procedure NA below -20°C (-4°F) or above 54°C (130°F). GPS required.	MINNEAPOLIS APP CON (Rwy 35) 118.725 335.65 119.3 335.65 (12L-30R, 4-22, 17) 126.95 335.65 (12R-30L)		MINNEAPOLIS TOWER (17-35) 123.675 273.55 123.95 273.55 (12L-30R) 126.7 273.55 (12R-30L, 4-22)		GND CON N 121.8 348.6 S 121.9 348.6 W 127.925 348.6	CLNC DEL 133.2
	D-ATIS ARR 135.35 239.275 DEP 120.8					
						CPDLC



HIRL all Rwys
 REIL Rwy 17
 TDZ/CL Rwys 12L, 12R, 30L, and 35



GP 3.00° TCH 52	6.6 NM			
CATEGORY	A	B	C	D
RNP 0.15 DA	1150/24 311 (400-½)			
RNP 0.30 DA	1241/45 402 (400-⅙)			

AUTHORIZATION REQUIRED