

APP CRS	Rwy Idg	<b>10000</b>
<b>121°</b>	TDZE	<b>842</b>
	Apt Elev	<b>842</b>

# RNAV (RNP) Y RWY 12R

MINNEAPOLIS-ST PAUL INTL/WOLD-CHAMBERLAIN (MSP)

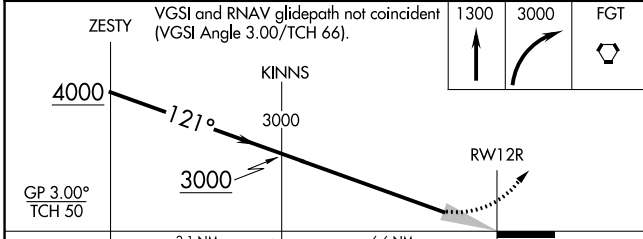
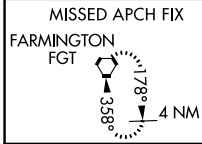
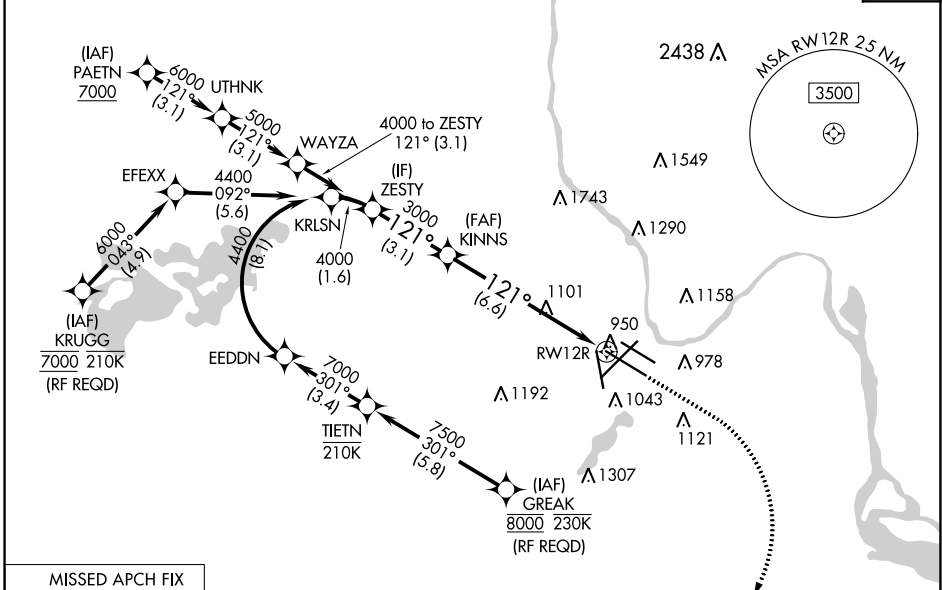
▼ For uncompensated Baro-VNAV systems, procedure NA below -20°C (-4°F) or above 54°C (130°F). Simultaneous approach authorized with Rwy 12L. GPS required. For inop ALS, increase RNP 0.15 all Cats visibility to RVR 6000.



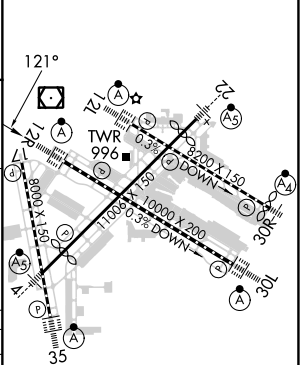
MISSED APPROACH: Climb to 1300 then climbing right turn to 3000 direct FGT VORTAC and hold.

D-ATIS	MINNEAPOLIS APP CON	MINNEAPOLIS TOWER	GND CON	CLNC DEL
ARR <b>135.35</b> 239.275	<b>118.725</b> 335.65 (Rwy 35)	<b>123.675</b> 273.55 (17-35)	<b>N 121.8</b> 348.6	<b>133.2</b>
DEP <b>120.8</b>	<b>119.3</b> 335.65 (12L-30R, 4-22, 17)	<b>123.95</b> 273.55 (12L-30R)	<b>S 121.9</b> 348.6	
	<b>126.95</b> 335.65 (12R-30L)	<b>126.7</b> 273.55 (12R-30L, 4-22)	<b>W 127.925</b> 348.6	

CPDLC



ELEV 842	<b>D</b>	TDZE 842
----------	----------	----------



CATEGORY	A	B	C	D
RNP 0.15 DA		1191/40	349 (400-¾)	
RNP 0.30 DA		1251/45	409 (500-¾)	

## AUTHORIZATION REQUIRED

HIRL all Rwys  
REIL Rwy 17  
TDZ/CL Rwys 12L, 12R, 30L, and 35

NC-1, 28 NOV 2024 to 26 DEC 2024

NC-1, 28 NOV 2024 to 26 DEC 2024