

APP CRS	Rwy Idg	8000
350°	TDZE	834
	Apt Elev	842

RNAV (RNP) Y RWY 35

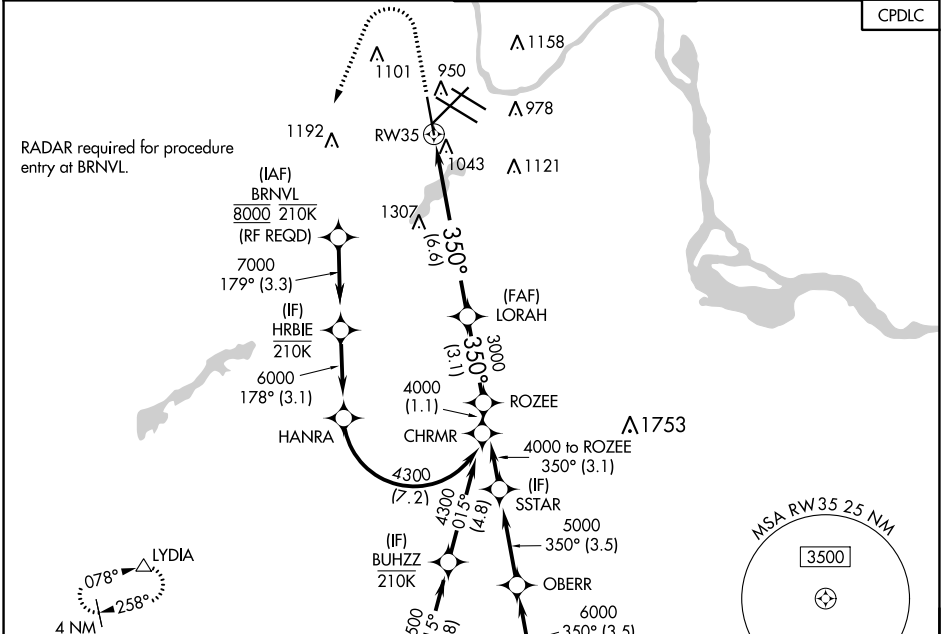
MINNEAPOLIS-ST PAUL INTL/WOLD-CHAMBERLAIN (MSP)

▼ For uncompensated Baro-VNAV systems, procedure NA below -19°C (-2°F) or above 54°C (130°F). For inop ALSF, increase RNP 0.30 all Cats visibility to 1½ miles. GPS required.



MISSED APPROACH: Climb to 1300 then climbing left turn to 3000 direct LYDIA and hold.

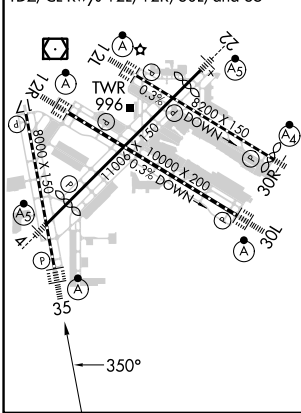
D-ATIS ARR 135.35 239.275 DEP 120.8	MINNEAPOLIS APP CON 118.725 335.65 (Rwy 35) 119.3 335.65 (12L-30R, 4-22, 17) 126.95 335.65 (12R-30L)	MINNEAPOLIS TOWER 123.675 273.55 (17-35) 123.95 273.55 (12L-30R) 126.7 273.55 (12R-30L, 4-22)	GND CON N 121.8 348.6 S 121.9 348.6 W 127.925 348.6	CLNC DEL 133.2
---	--	---	---	--------------------------



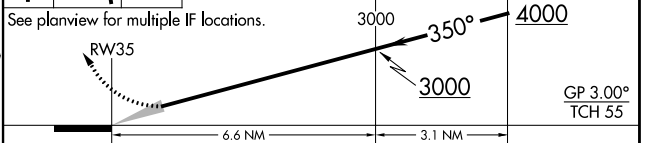
NC-1, 28 NOV 2024 to 26 DEC 2024

NC-1, 28 NOV 2024 to 26 DEC 2024

ELEV 842	D	TDZE 834
HIRL all Rwys		
REIL Rwy 17		
TDZ/CL Rwys 12L, 12R, 30L, and 35		



1300 3000 LYDIA VGS1 and RNAV glidepath not coincident (VGS1 Angle 3.00/TCH 71). ROZEE



CATEGORY	A	B	C	D
RNP 0.11 DA		1213/40	379 (400-¾)	
RNP 0.16 DA		1291/60	457 (500-1¼)	
RNP 0.30 DA		1345-1¼	511 (600-1¼)	

AUTHORIZATION REQUIRED

RNAV (RNP) Y RWY 35