

WAAS CH <b>50125</b> <b>W12A</b>	APP CRS <b>121°</b>	Rwy Idg <b>10000</b> TDZE <b>842</b> Apt Elev <b>842</b>
--	------------------------	--

# RNAV (GPS) Z RWY 12R

MINNEAPOLIS-ST PAUL INTL/WOLD-CHAMBERLAIN (MSP)

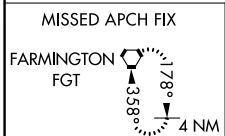
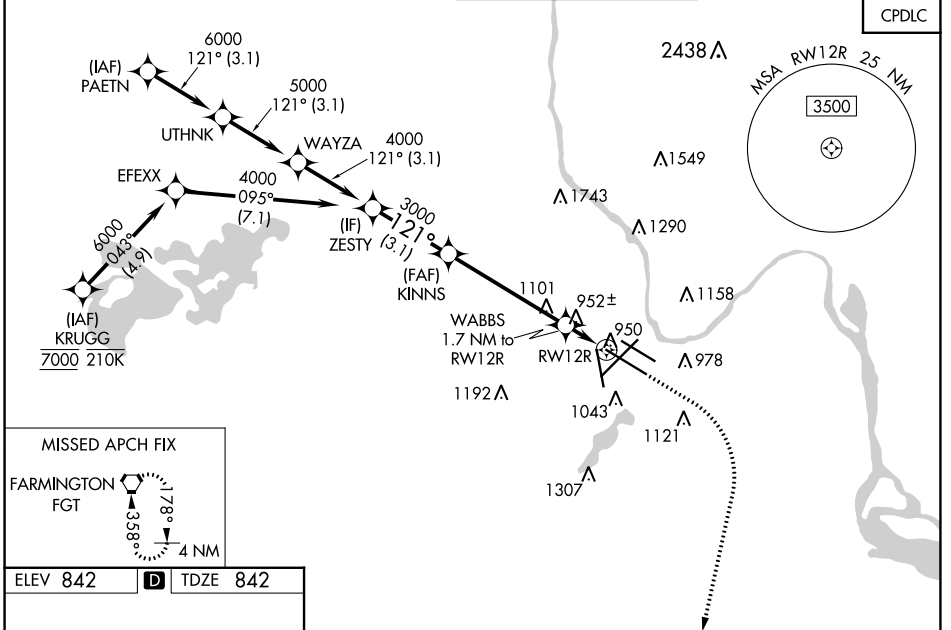
**⚠** For uncompensated Baro-VNAV systems, LNAV/VNAV NA below -20°C (-4°F) or above 54°C (130°F). Simultaneous approach authorized with Rwy 12L. DME/DME RNP-0.3 NA. Use of FD or AP providing RNAV track guidance required during simultaneous operations. For inop ALS, increase LPV Cat E visibility to RVR 4000, increase LNAV/VNAV Cat E visibility to 1½ SM, and increase LNAV Cat C/D/E visibility to RVR 5500. LNAV procedure NA during simultaneous operations.

ALSF-2

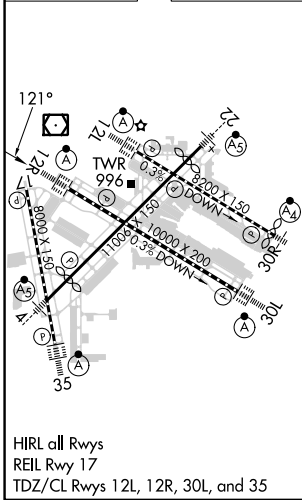


**MISSED APPROACH:**  
Climb to 1300 then climbing right turn to 3000 direct FGT VORTAC and hold.

D-ATIS ARR <b>135.35 239.275</b> DEP <b>120.8</b>	MINNEAPOLIS APP CON <b>118.725 335.65</b> (Rwy 35) <b>119.3 335.65</b> (12L-30R, 4-22, 17) <b>126.95 335.65</b> (12R-30L)	MINNEAPOLIS TOWER <b>123.675 273.55</b> (17-35) <b>123.95 273.55</b> (12L-30R) <b>126.7 273.55</b> (12R-30L, 4-22)	GND CON <b>N 121.8 348.6</b> <b>S 121.9 348.6</b> <b>W 127.925 348.6</b>	CLNC DEL <b>133.2</b>
---	--	---	---	--------------------------



ELEV 842	<b>D</b>	TDZE 842
----------	----------	----------



HIRL all Rwys  
REIL Rwy 17  
TDZ/CL Rwys 12L, 12R, 30L, and 35

ZESTY		VGSI and RNAV glidepath not coincident (VGSI Angle 3.00/TCH 66).		1300	3000	FGT
KINNS		WABBS 1.7 NM to RW12R		*NNAV only		
4000	121°	3000	*1420	*1 NM to RW12R		
GP 3.00°		TCH 50				
← 3.1 NM		← 4.9 NM		← 0.7 NM		
CATEGORY	A	B	C	D	E	
LPV DA	1042/18		200 (200-½)			
LNAV/VNAV DA	1211/40		369 (400-¾)			
LNAV MDA	1220/24		378 (400-½)		1220/35 378 (400-⅝)	
<b>C</b> CIRCLING	1360-1 518 (600-1)		1460-1¾ 1660-2¾		1800-3 618 (700-1¼) 818 (900-2¾) 958 (1000-3)	

NC-1, 28 NOV 2024 to 26 DEC 2024

NC-1, 28 NOV 2024 to 26 DEC 2024