

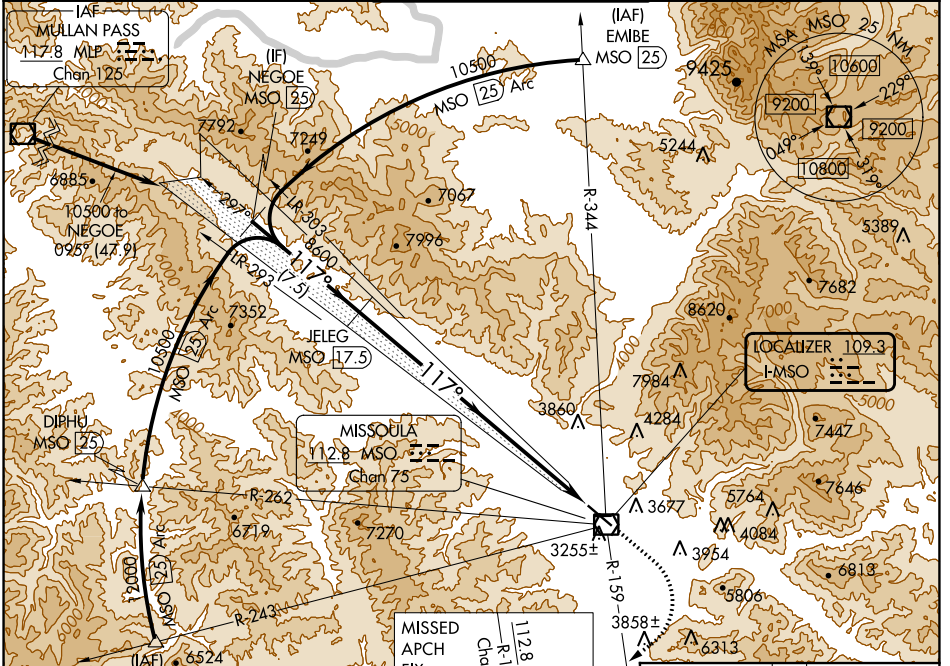
LOC I-MSO <b>109.3</b>	APP CRS <b>117°</b>	Rwy ldg TDZE Apt Elev	<b>9501</b> <b>3200</b> <b>3206</b>
---------------------------	------------------------	-----------------------------	---

# ILS Z RWY 12

MISSOULA MONTANA (MISO)

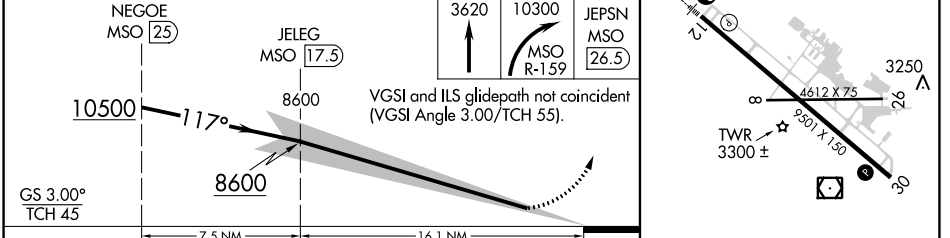
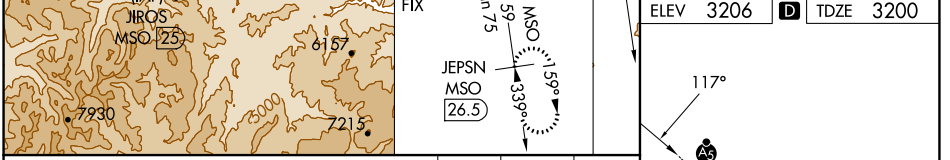
DME required.		MALSRS	MISSED APPROACH: Climb to 3620 then climbing right turn to 10300 on MSO VOR/DME R-159 to JEPSN/MISO 26.5 DME and hold. Missed approach requires minimum climb of 410 feet per NM to 9800; if unable to meet climb gradient, see ILS Y RWY 12.
-12°C			

ATIS <b>126.65</b>	SPOKANE APP CON * <b>124.9 298.95</b>	MISSOULA TOWER * <b>118.4 (CTAF) 377.175</b>	GND CON <b>121.9</b>	UNICOM <b>122.95</b>
-----------------------	--	---	-------------------------	-------------------------



NW-1, 28 NOV 2024 to 26 DEC 2024

NW-1, 28 NOV 2024 to 26 DEC 2024



CATEGORY	A	B	C	D
S-ILS 12		3411/24	211 (300-½)	

REIL Rwy 30  
MIRL Rwy 8-26  
HIRL Rwy 12-30