

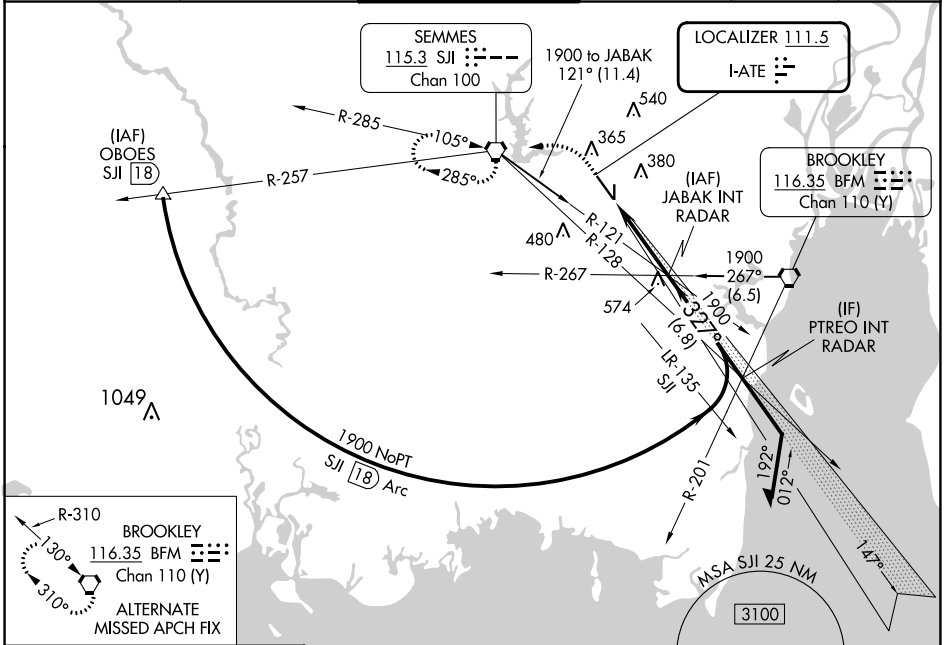
LOC I-ATE 111.5	APP CRS 327°	Rwy Idg 8502 TDZE 219 Apt Elev 219
---------------------------	------------------------	---

ILS or LOC RWY 33

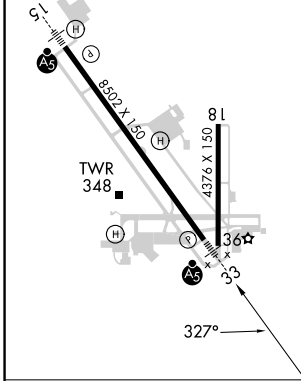
MOBILE RGNL (MOB)

<p>* RVR 1800 authorized with use of FD or AP or HUD to DA.</p>		<p>MISSED APPROACH: Climb to 700 then climbing left turn to 2000 direct SJJ VORTAC and hold.</p>

ATIS 124.75 257.85	MOBILE APP CON * 118.5 269.3	MOBILE TOWER * 118.3 (CTAF) 239.0	GND CON 121.9 348.6	CLNC DEL 119.85	UNICOM 122.95
------------------------------	--	---	-------------------------------	---------------------------	-------------------------



ELEV 219	TDZE 219
MIRL Rwy 18-36 HIRL Rwy 15-33	



700	2000	SJJ	<p>JABAK INT RADAR</p> <p>Remain within 10 NM</p>
↑	↩	⬡	
<p>VGSI and ILS glidepath not coincident (VGSI Angle 3.00/TCH 50).</p>			
<p>1900</p>		<p>1900</p>	
<p>1900</p>		<p>1900</p>	
<p>5.1 NM</p>		<p>GS 3.00° TCH 57</p>	

FAF to MAP 5.1 NM					
Knots	60	90	120	150	180
Min:Sec	5:06	3:24	2:33	2:02	1:42

CATEGORY	A	B	C	D
S-ILS 33*	419/24 200 (200-½)			
S-LOC 33	660/24	441 (500-½)	660/45	441 (500-¾)
<input checked="" type="checkbox"/> CIRCLING	680-1	461 (500-1)	740-1½ 521 (600-1½)	780-2 561 (600-2)

SE-4, 28 NOV 2024 to 26 DEC 2024

SE-4, 28 NOV 2024 to 26 DEC 2024