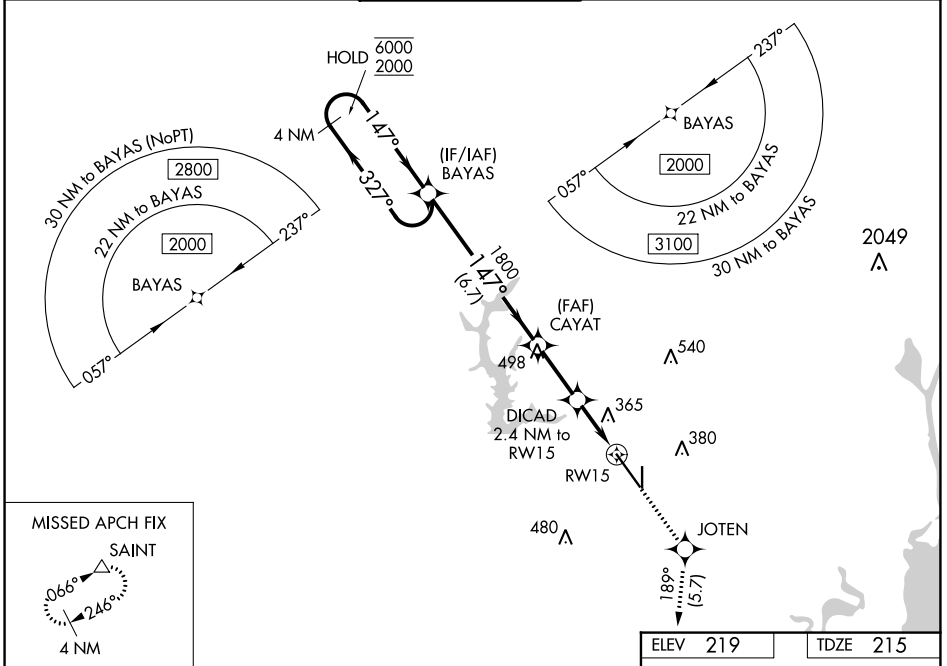


WAAS CH <b>97506</b> <b>W15A</b>	APP CRS <b>147°</b>	Rwy Idg TDZE Apt Elev	<b>8502</b> <b>215</b> <b>219</b>
--	------------------------	-----------------------------	---

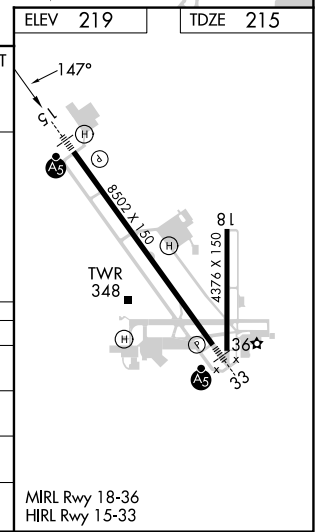
# RNAV (GPS) RWY 15

MOBILE RGNL (MOB)

RNP APCH - GPS.		MALSR		MISSED APPROACH: Climb to 2000 direct JOTEN and on track 189° to SAINT and hold.	
⚠ For uncompensated Baro-VNAV systems, LNAV/VNAV NA below -4°C or above 42°C. For inop ALS, increase LNAV Cats C/D visibility to RVR 6000. * RVR 1800 authorized with use of FD or AP or HUD to DA.					
ATIS	MOBILE APP CON ★	MOBILE TOWER ★	GND CON	CLNC DEL	UNICOM
<b>124.75 257.85</b>	<b>118.5 269.3</b>	<b>118.3 (CTAF) 239.0</b>	<b>121.9 348.6</b>	<b>119.85</b>	<b>122.95</b>



VGSI and RNAV glidepath not coincident (VGSI Angle 3.00/TCH 50). 4 NM Holding Pattern BAYAS		2000	JOTEN	tr 189°	SAINT
GP 3.00° TCH 55		6000	2000	147°	327°
6.7 NM		1800	1020	147°	1800
2.4 NM		DICAD 2.4 NM to RW15		1.1 NM to RW15	
1.3 NM		RW15		1.1 NM	
CATEGORY	A	B	C	D	
LPV DA*		415/24	200 (200-½)		
LNAV/VNAV DA		636/45	421 (500-¾)		
LNAV MDA		620/40	405 (500-¾)		
CIRCLING	680-1	461 (500-1)	740-1½ 521 (600-1½)	780-2 561 (600-2)	



SE-4, 28 NOV 2024 to 26 DEC 2024

SE-4, 28 NOV 2024 to 26 DEC 2024