

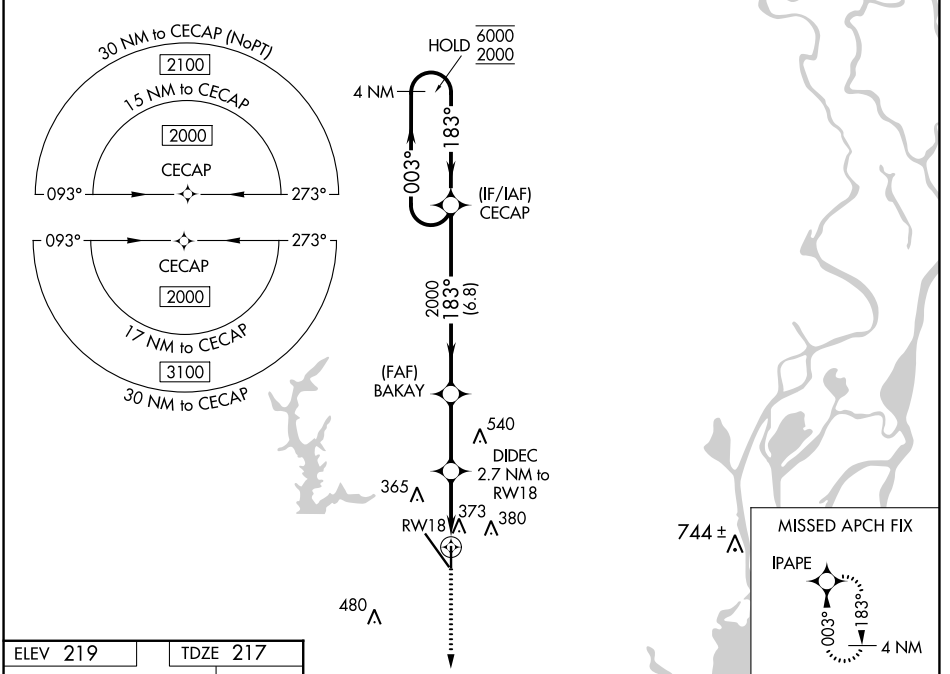
WAAS CH 78128 W18A	APP CRS 183°	Rwy ldg TDZE Apt Elev	4376 217 219
--	------------------------	-----------------------------	---

RNAV (GPS) RWY 18

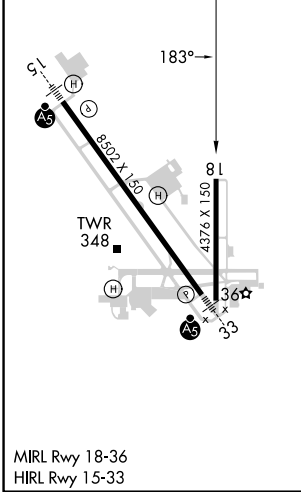
MOBILE RGNL (MOB)

RNP APCH - GPS.		MISSED APPROACH: Climb to 2000 direct IPAPE and hold.			
⚠ For uncompensated Baro-VNAV systems, LNAV/VNAV NA below -4°C or above 42°C. Rwy 18 helicopter visibility reduction below ¼ SM NA.					

ATIS 124.75 257.85	MOBILE APP CON ★ 118.5 269.3	MOBILE TOWER ★ 118.3 (CTAF) 0 239.0	GND CON 121.9 348.6	CLNC DEL 119.85	UNICOM 122.95
------------------------------	--	---	-------------------------------	---------------------------	-------------------------



ELEV 219	TDZE 217
----------	----------



	4 NM Holding Pattern	CECAP	BAKAY	DIDECE	RWY 18
	6000 2000	2000	2000	1120	
	GP 3.00° TCH 45				
		6.8 NM	2.8 NM	1.4 NM	1.3 NM
CATEGORY	A	B	C	D	
LPV DA		508-1	291 (300-1)		
LNAV/VNAV DA		624-1 ³ / ₈	407 (500-1 ³ / ₈)		
LNAV MDA	640-1	423 (500-1)	640-1 ¹ / ₄	423 (500-1 ¹ / ₄)	
C CIRCLING	680-1	461 (500-1)	740-1 ¹ / ₂	780-2	
			521 (600-1 ¹ / ₂)	561 (600-2)	

SE-4, 28 NOV 2024 to 26 DEC 2024

SE-4, 28 NOV 2024 to 26 DEC 2024