

LOC/DME I-RUJ 108.5 Chan 22	APP CRS 320°	Rwy Idg 9618 TDZE 25 Apt Elev 26
--	------------------------	---

ILS or LOC RWY 32

MOBILE INTL (BFM)

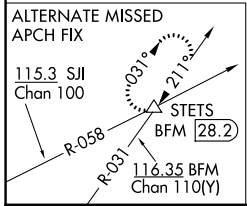
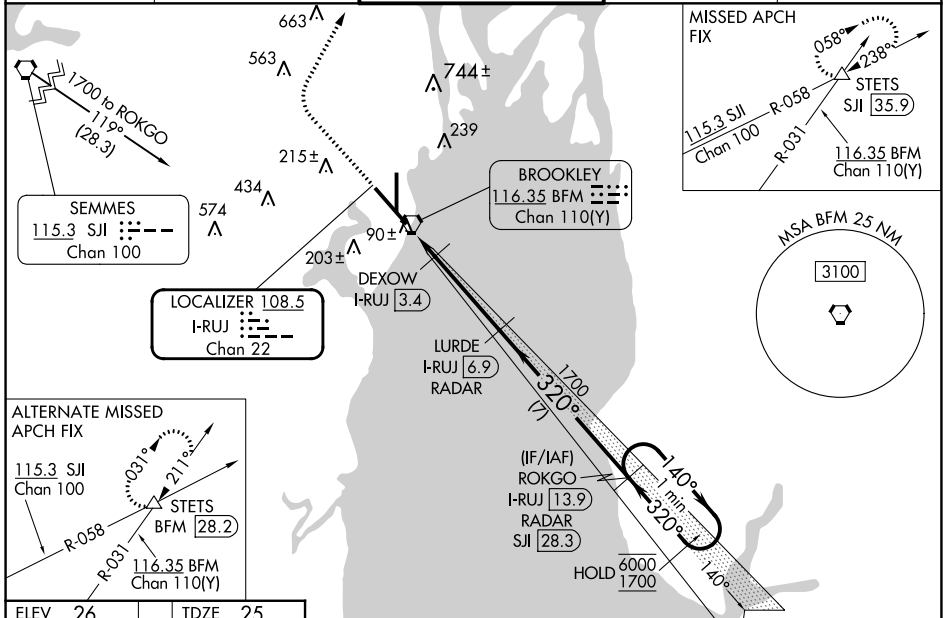
DME or RADAR required.

⚠ For inop ALS, increase S-LOC 32 Cat C/D visibility to 1¾ and DEXOW S-LOC 32 Cat C/D visibility to RVR 4500.

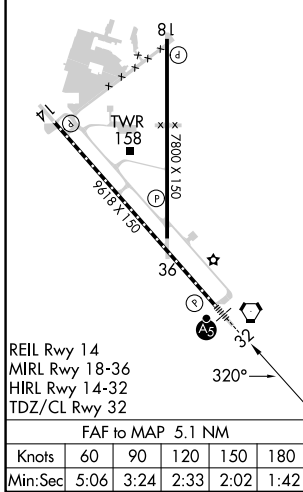
MALSRS

MISSED APPROACH: Climb to 800 then climbing right turn to 2000 on heading 030° and on SJJ R-058 to STETS INT/SJJ 35.9 DME and hold.

ATIS 135.575	MOBILE APP CON ★ 118.5 269.3	INTERNATIONAL TOWER ★ 118.8 (CTAF) 251.1	GND CON 121.7 239.3	UNICOM 122.95
------------------------	--	--	-------------------------------	-------------------------



ELEV 26	TDZE 25
---------	---------



800	2000	SJJ R-058	STETS	VGSI and ILS glidepath not coincident (VGSI Angle 3.00/TCH 71).
		hdg 030°		LURDE I-RUJ 6.9 RADAR
				ROKGO I-RUJ 13.9 RADAR
				DEXOW I-RUJ 3.4
				I-RUJ 1.8
				I-RUJ 2.6
				580
				1700
				320°
				140°
				6000
				1700
				GS 3.00°
				TCH 55
				One Minute Holding Pattern
CATEGORY	A	B	C	D
S-ILS 32		225/18	200 (200-½)	
S-LOC 32	580/24	555 (600-½)	580/60	555 (600-1¼)
CIRCLING	680-1	654 (700-1)	680-1¾ 654 (700-1¾)	1100-3 1074 (1100-3)
	DEXOW FIX MINIMUMS			
S-LOC 32		340/24	315 (400-½)	
CIRCLING	680-1	654 (700-1)	680-1¾ 654 (700-1¾)	1100-3 1074 (1100-3)

SE-4, 28 NOV 2024 to 26 DEC 2024

SE-4, 28 NOV 2024 to 26 DEC 2024