

WAAS CH <b>56511</b> <b>W36A</b>	APP CRS <b>001°</b>	Rwy Idg <b>7800</b> TDZE <b>26</b> Apt Elev <b>26</b>
--	------------------------	---

# RNAV (GPS) RWY 36

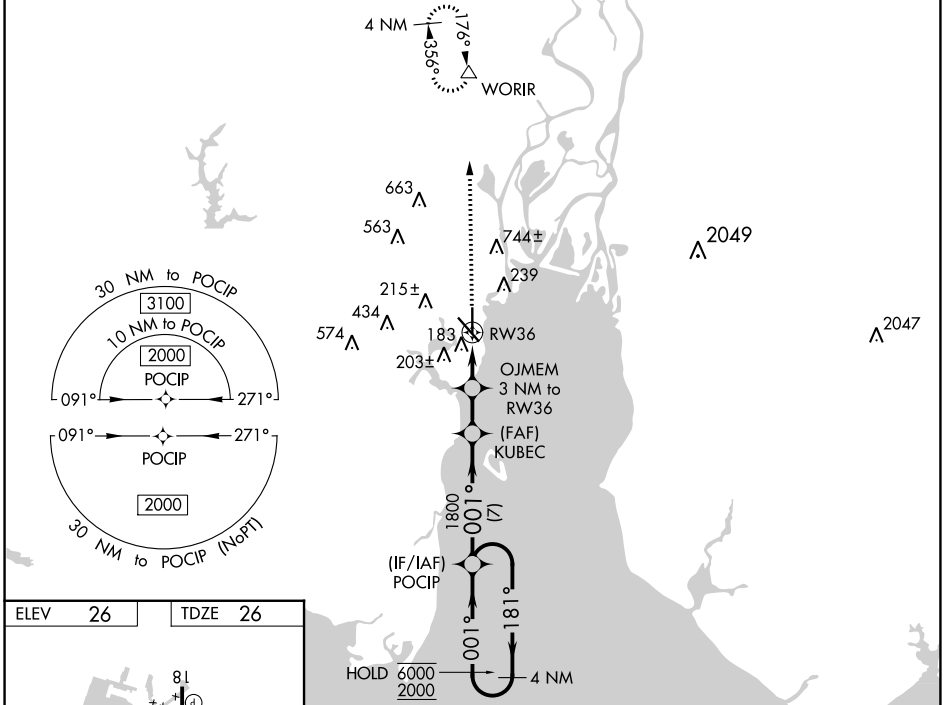
MOBILE INTL (BFM)

RNP APCH - GPS.

**⚠** Rwy 36 helicopter visibility reduction below 3/4 SM NA.  
For uncompensated Baro-VNAV systems, LNAV/VNAV NA below -2°C or above 54°C.

**MISSED APPROACH:**  
Climb to 2300 direct WORIR and hold.

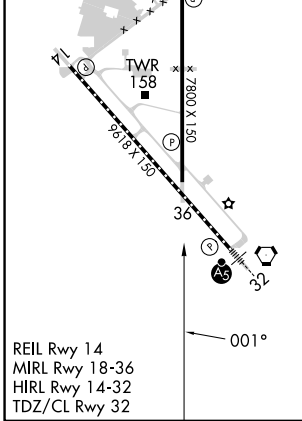
ATIS <b>135.575</b>	MOBILE APP CON ★ <b>118.5 269.3</b>	<b>INTERNATIONAL TOWER★</b> <b>118.8 (CTAF) 0 251.1</b>	GND CON <b>121.7 239.3</b>	UNICOM <b>122.95</b>
------------------------	--	--	-------------------------------	-------------------------



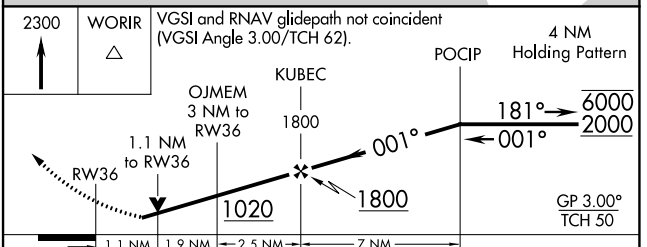
SE-4, 28 NOV 2024 to 26 DEC 2024

SE-4, 28 NOV 2024 to 26 DEC 2024

ELEV <b>26</b>	TDZE <b>26</b>
----------------	----------------



REIL Rwy 14  
MIRL Rwy 18-36  
HIRL Rwy 14-32  
TDZ/CL Rwy 32



3000	WORIR	VGSI and RNAV glidepath not coincident (VGSI Angle 3.00°/TCH 62).				4 NM Holding Pattern
1800	KUBEC	POICIP	181°	6000	2000	GP 3.00° TCH 50
1020	OJMEM 3 NM to RW36	1800	001°	001°		
1.1 NM	1.9 NM	2.5 NM	7 NM			
CATEGORY	A	B	C	D		
LPV DA		304-1	278 (300-1)			
LNAV/VNAV DA		364-1	338 (400-1)			
LNAV MDA	440-1	414 (500-1)	440-1 1/8	414 (500-1 1/8)		
<b>C</b> CIRCLING	680-1	654 (700-1)	680-1 3/4	1100-3		
			654 (700-1 3/4)	1074 (1100-3)		