

VORTAC BFM <b>116.35</b> Chan <b>110(Y)</b>	APP CRS <b>130°</b>	Rwy Idg TDZE Apt Elev	<b>9618</b> <b>26</b> <b>26</b>
---	------------------------	-----------------------------	---------------------------------------

# VOR RWY 14

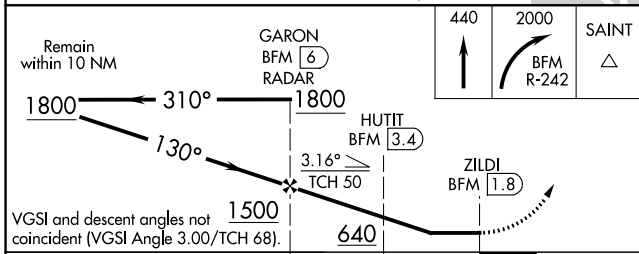
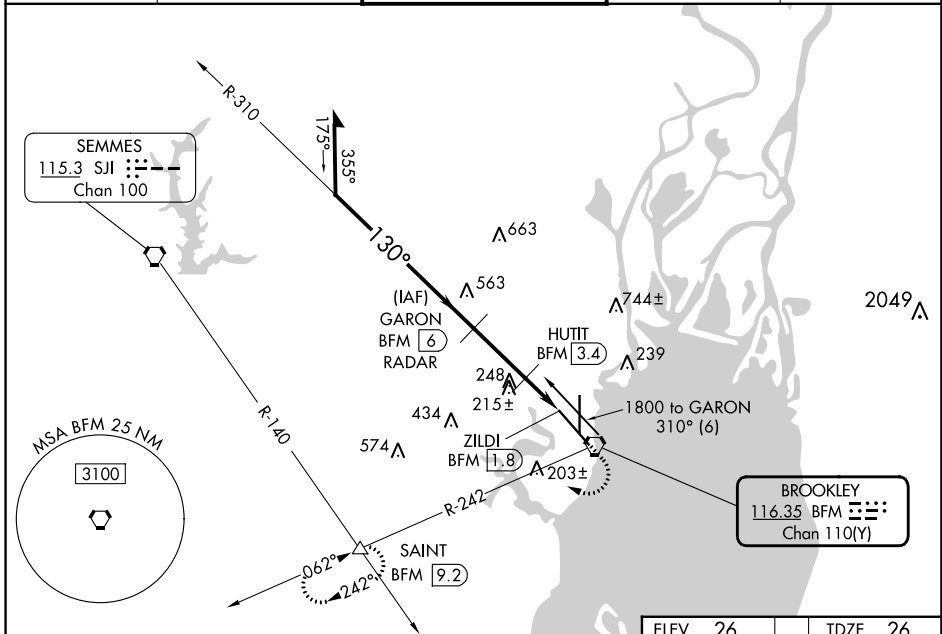
MOBILE INTL (BFM)

DME or RADAR required.

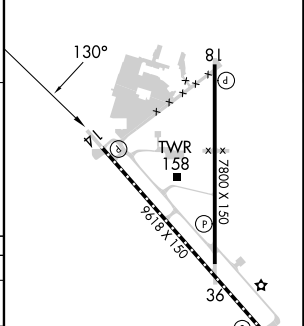
**⚠** Rwy 14 helicopter visibility reduction below 3/4 SM NA.

MISSED APPROACH: Climb to 440 then climbing right turn to 2000 on BFM VORTAC R-242 to SAINT INT/ BFM 9.2 DME and hold, continue climb-in-hold to 2000.

ATIS <b>135.575</b>	MOBILE APP CON* <b>118.5 269.3</b>	INTERNATIONAL TOWER* <b>118.8 (CTAF) 251.1</b>	GND CON <b>121.7 239.3</b>	UNICOM <b>122.95</b>
------------------------	---------------------------------------	---	-------------------------------	-------------------------



ELEV	26	TDZE	26
------	----	------	----



CATEGORY	A	B	C	D
S-14	640-1	614 (700-1)	640-1 3/4	614 (700-1 3/4)
<b>C</b> CIRCLING	680-1	654 (700-1)	680-1 3/4 654 (700-1 3/4)	1100-3 1074 (1100-3)
HUTIT DME FIX MINIMUMS				
S-14	500-1	474 (500-1)	500-1 3/8	474 (500-1 3/8)
<b>C</b> CIRCLING	680-1	654 (700-1)	680-1 3/4 654 (700-1 3/4)	1100-3 1074 (1100-3)

REIL Rwy 14  
HIRL Rwy 14-32  
MIRL Rwy 18-36  
TDZ/CL Rwy 32

FAF to MAP 4.2 NM

Knots	60	90	120	150	180
Min:Sec	4:12	2:48	2:06	1:41	1:24

SE-4, 28 NOV 2024 to 26 DEC 2024

SE-4, 28 NOV 2024 to 26 DEC 2024