

WAAS CH 86715 W31A	APP CRS 306°	Rwy Idg TDZE 583 Apt Elev 590	6432
--	------------------------	---	-------------

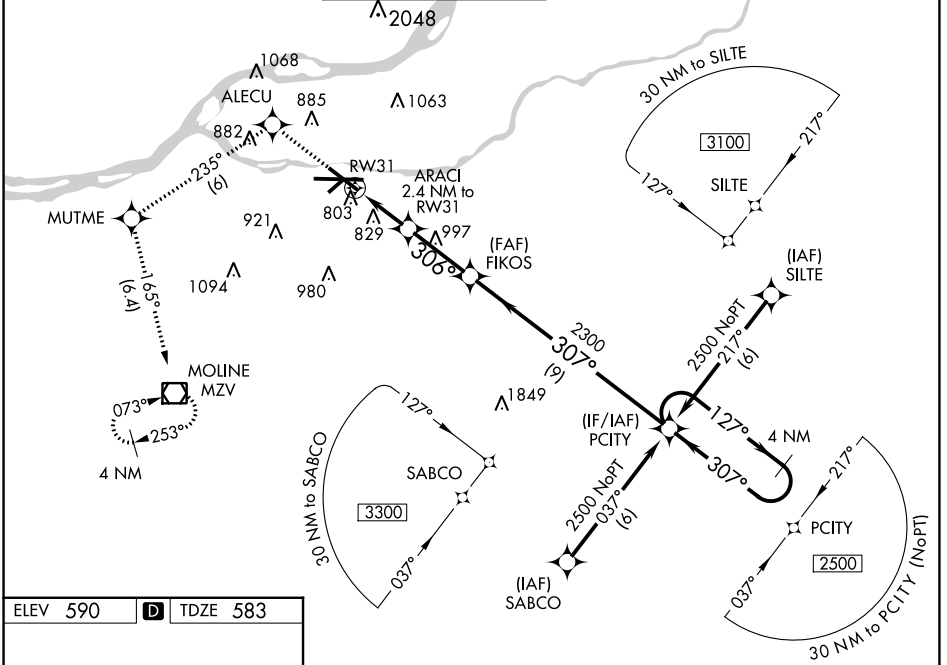
RNAV (GPS) RWY 31

QUAD CITIES INTL (MLI)

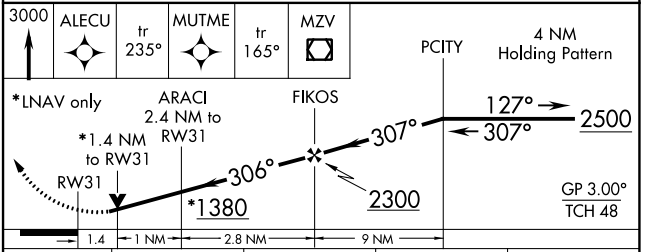
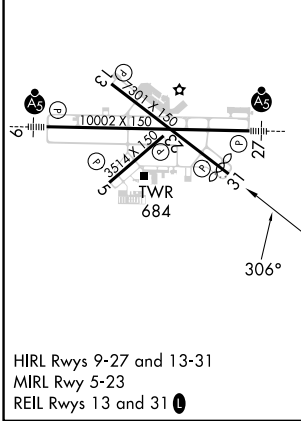
⚠ Circling to Rwy 5 NA at night. For uncompensated Baro-VNAV systems, LNAV/VNAV NA below -16°C (4°F) or above 47°C (116°F). DME/DME RNP-0.3 NA. When local altimeter setting not received, use Davenport altimeter setting and increase LPV DA to 1078 feet and LNAV/VNAV DA to 1207 feet and all MDA 60 feet, increase LPV all Cats, LNAV/VNAV all cats, LNAV Cats C and D, and Circling Cats C and D visibility ¼ SM. Baro-VNAV and VDP NA when using Davenport altimeter setting. Rwy 31 helicopter visibility reduction below ¼ SM NA.

⚠ MISSED APPROACH: Climb to 3000 direct ALECU and on track 235° to MUTME and on track 165° to MZV VOR/DME and hold.

ATIS 121.2	QUAD CITY APP CON * 125.95 257.8	QUAD CITY TOWER * 119.4 (CTAF) 269.55	GND CON 121.9	CLNC DEL 124.05	UNICOM 122.95
----------------------	--	---	-------------------------	---------------------------	-------------------------



ELEV 590	D	TDZE 583
----------	----------	----------



CATEGORY	A	B	C	D
LPV DA		1031-1½	448 (500-1½)	
LNAV/VNAV DA		1160-2	577 (600-2)	
LNAV MDA	1080-1	497 (500-1)	1080-1¼ 497 (500-1¼)	1080-1½ 497 (500-1½)
CIRCLING	1140-1 550 (600-1)	1200-1 610 (700-1)	1320-2 730 (800-2)	1420-2¾ 830 (900-2¾)

EC-3, 28 NOV 2024 to 26 DEC 2024

EC-3, 28 NOV 2024 to 26 DEC 2024