


WAAS CH <b>61123</b> <b>W09A</b>	APP CRS <b>090°</b>	Rwy Idg <b>10002</b> TDZE <b>587</b> Apt Elev <b>590</b>
--	------------------------	--

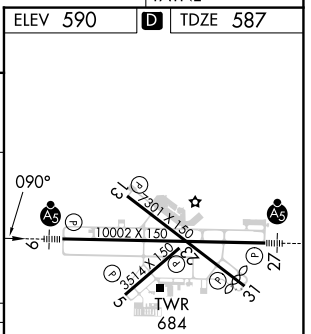
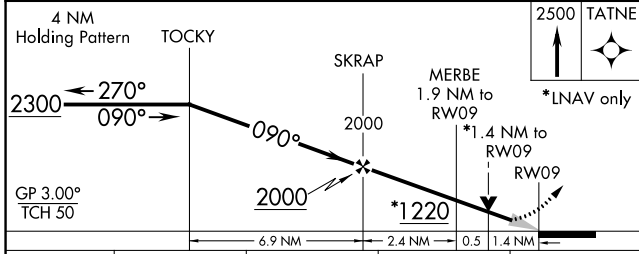
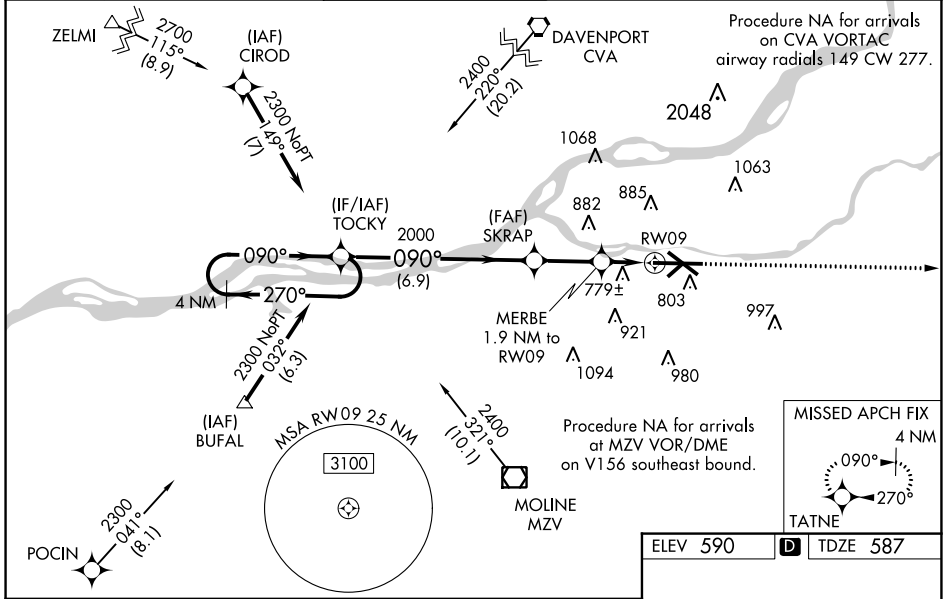
# RNAV (GPS) RWY 9

QUAD CITIES INTL (MLI)

**⚠** Circling to Rwy 5 NA at night. Baro-VNAV NA when using Davenport altimeter setting. For uncompensated Baro-VNAV systems, LNAV/VNAV NA below -26°C (-14°F) or above 40°C (104°F). DME/DME RNP-0.3 NA. VDP NA when using Davenport altimeter setting. When local altimeter setting not received, use Davenport altimeter setting and increase LPV DA to 825 feet and LNAV/VNAV DA to 1160 feet and LNAV/VNAV visibility all Cats 1/2 SM; increase all MDA 60 feet and LNAV visibility Cats C and D 1/2 SM, Circling Cats C and D 1/4 SM. For inoperative ALS, increase LNAV visibility Cats C and D to 1 1/2 SM. When using Davenport altimeter increase LNAV/VNAV visibility all Cats to 2 SM, LNAV visibility Cats C and D to 1 1/2 SM.  
**\*\* RVR 1800 authorized with use of FD or AP or HUD to DA.**

**MALSRS**  
  
**MISSED APPROACH:**  
 Climb to 2500 direct TATNE and hold.

ATIS <b>121.2</b>	QUAD CITY APP CON * <b>125.95 257.8</b>	QUAD CITY TOWER * <b>119.4 (CTAF) 0 269.55</b>	GND CON <b>121.9</b>	CLNC DEL <b>124.05</b>	UNICOM <b>122.95</b>
----------------------	--	---	-------------------------	---------------------------	-------------------------



CATEGORY	A	B	C	D
LPV DA**	787/24		200 (200-1/2)	
LNAV/VNAV DA	1122-1 3/8		535 (600-1 3/8)	
LNAV MDA	1060/24	473 (500-1/2)	1060/50	473 (500-1)
CIRCLING	1140-1 550 (600-1)	1200-1 610 (700-1)	1320-2 730 (800-2)	1420-2 3/4 830 (900-2 3/4)

MIRL Rwy 5-23  
 REIL Rws 13 and 31  
 HIRL Rws 9-27 and 13-31

EC-3, 28 NOV 2024 to 26 DEC 2024

EC-3, 28 NOV 2024 to 26 DEC 2024