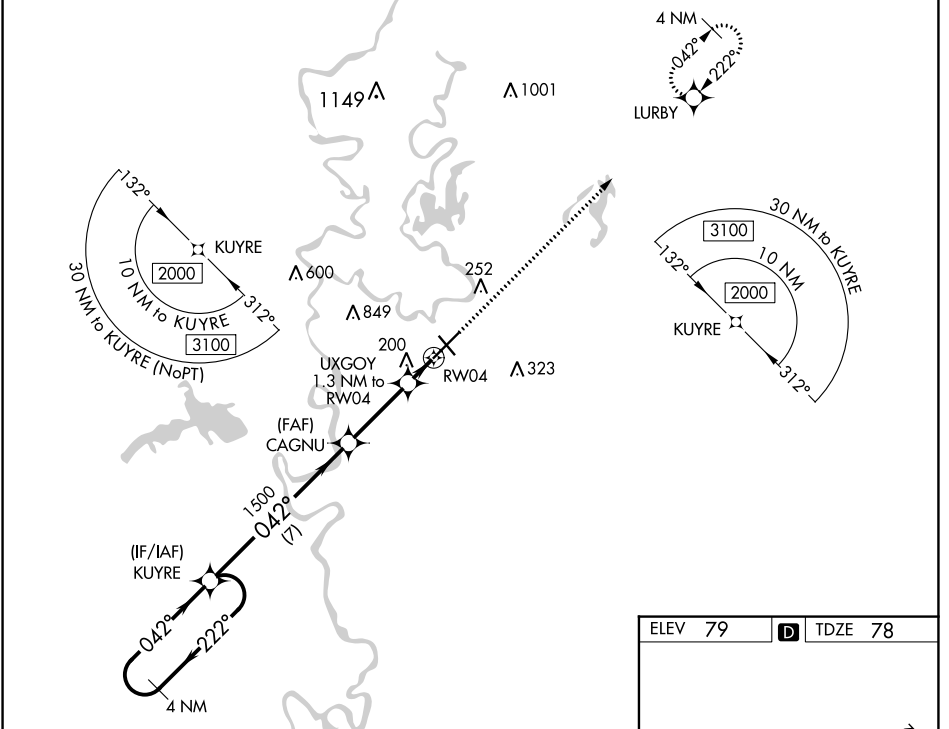


WAAS CH <b>56410</b> <b>W04A</b>	APP CRS <b>042°</b>	Rwy Idg <b>7504</b> TDZE <b>78</b> Apt Elev <b>79</b>
--	------------------------	---

# RNAV (GPS) RWY 4

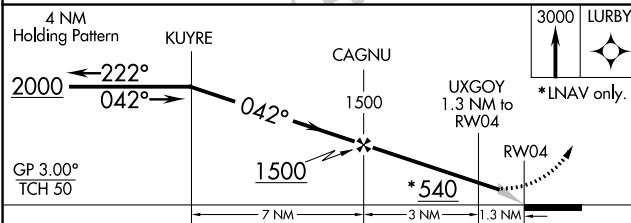
MONROE RGNL (MLU)

RNP APCH.		MALSR 		MISSED APPROACH: Climb to 3000 direct LURBY and hold.	
<p><b>▼</b> For uncompensated Baro-VNAV systems, LNAV/VNAV NA below -15°C or above 54°C. For inop ALS, increase LNAV/VNAV all Cats visibility to RVR 4500. Circling ASR Rwy 14 NA at night.  <b>** RVR 1800 authorized with use of FD or AP or HUD to DA.</b></p>		<p>ATIS <b>125.05</b></p>		<p>MONROE APP CON <b>118.15 290.475</b></p>	
<p>MONROE TOWER <b>118.9</b> (CTAF) <b>0 257.8</b></p>		<p>GND CON <b>121.9</b></p>		<p>CLNC DEL <b>121.65</b></p>	
				<p>UNICOM <b>122.95</b></p>	



SC-4, 28 NOV 2024 to 26 DEC 2024

SC-4, 28 NOV 2024 to 26 DEC 2024



ELEV 79	<b>D</b> TDZE 78
---------	------------------

REIL Rwy 14 and 32  
MIRL Rwy 14-32 **1**  
HIRL Rwy 4-22 **1**

CATEGORY	A	B	C	D
LPV DA **		278/24	200 (200-½)	
LNAV/VNAV DA		383/24	305 (400-½)	
LNAV MDA	460/24	382 (400-½)	460/35	382 (400-¾)
<b>C</b> CIRCLING	580-1	501 (600-1)	740-1¾ 661 (700-1¾)	1160-3 1081 (1100-3)