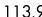


MONTEREY FIVE DEPARTURE


AL-271 (FAA)

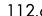
MONTEREY RGNL (MRY)
MONTEREY, CALIFORNIA

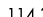
**TOP ALTITUDE:
7000**

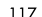
WOODSIDE
113.9 OSI 
Chan 86

SAN JOSE
114.1 SJC 
Chan 88

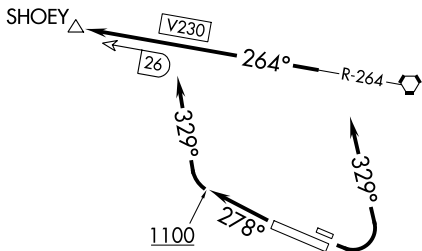
SALINAS
117.3 SNS 
Chan 120

PANOCHÉ
112.6 PXN 
Chan 73

PASO ROBLES
114.3 PRB 
Chan 90

AVENAL
117.1 AVE 
Chan 118

ATIS
119.25
CLNC DEL
135.45
GND CON
120.875 348.6
MONTEREY TOWER ★
118.4 257.8
NORCAL DEP CON
133.0 251.15 (001°-135°)
127.15 307.125 (136°-360°)



TAKEOFF MINIMUMS

- Rwy 10L: Standard with minimum climb of 360' per NM to 1300.
- Rwy 10R: Standard with minimum climb of 390' per NM to 1200.
- Rwy 28L: Standard with minimum climb of 310' per NM to 1100.
- Rwy 28R: Standard.

NOTE: Chart not to scale.

DEPARTURE ROUTE DESCRIPTION

TAKEOFF RUNWAYS 10L/R: Climbing left turn heading 329°. Thence. . . .

TAKEOFF RUNWAYS 28L/R: Climb heading 278° until leaving 1100 or as directed by Monterey Tower. Then climbing right turn heading 329°. Thence. . . .

. . . . intercept SNS R-264 westbound to SHOHEY intersection. Maintain 7000 or assigned altitude. Expect clearance to filed altitude five minutes after departure.

SW-2, 28 NOV 2024 to 26 DEC 2024

SW-2, 28 NOV 2024 to 26 DEC 2024