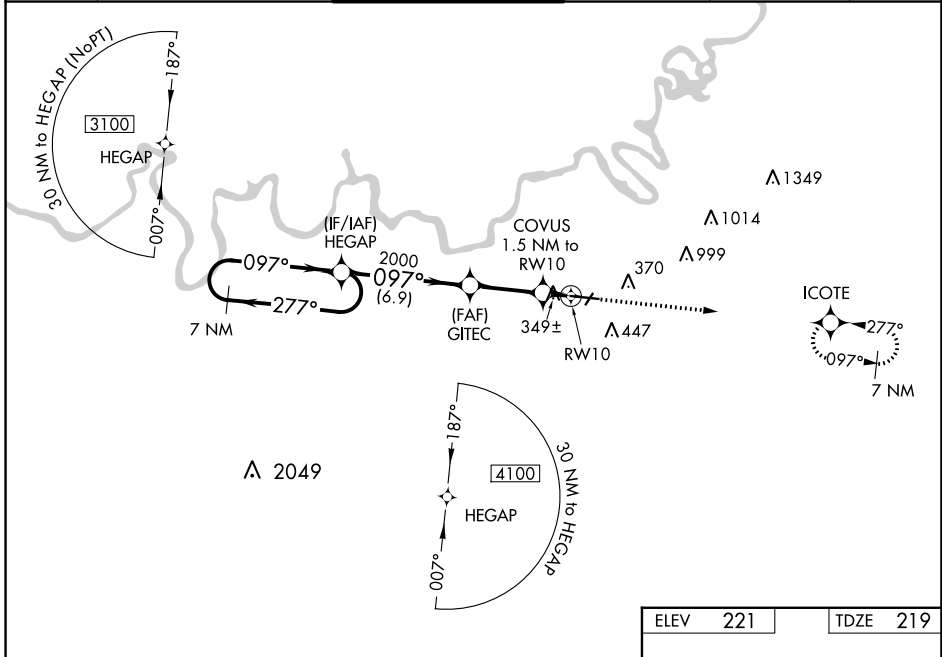


WAAS CH <b>50100</b> <b>W10A</b>	APP CRS <b>097°</b>	Rwy Idg TDZE Apt Elev	<b>9020</b> <b>219</b> <b>221</b>
--	------------------------	-----------------------------	---

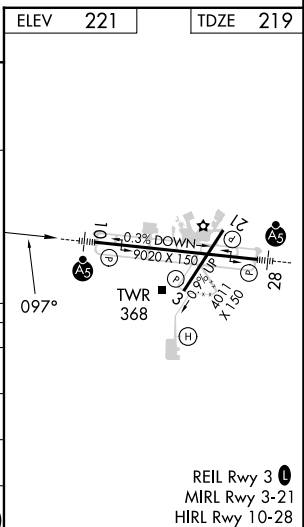
# RNAV (GPS) RWY 10

MONTGOMERY RGNL (DANNELLY FLD) (MGM)

RNP APCH.		DANNELLY TOWER ★		GND CON	CLNC DEL	UNICOM
<p>▼ For uncompensated Baro-VNAV systems, LNAV/VNAV NA below -8°C (18°F) or above 54°C (130°F). For inop MALS, increase LPV Cat E visibility to RVR 4000; increase LNAV/VNAV Cat E visibility to RVR 5000; increase LNAV Cats C/D/E visibility to 1½ mile. Circling for Cat E NA north of Rwy 10-28.                  **RVR 1800 authorized with use of FD or AP or HUD to DA.</p>		<p>★ <b>119.7 (CTAF) 360.85</b></p>		<p><b>121.7 348.6</b></p>	<p><b>118.3 270.3</b></p>	<p><b>122.95</b></p>
ATIS	MONTGOMERY APP CON ★					
<b>120.675</b>	<b>124.0 363.025</b>					



VGSi and RNAV glidepath not coincident (VGSi Angle 3.00/TCH 64).					
7 NM Holding Pattern HEGAP 3100 ← 277° / 097° →		GITEC 2000 *740		COVUS 1.5 NM to RWY 10 *1 NM to RWY 10 RWY 10	
GP 3.00° TCH 50		*LNNAV only.		2600 ICOTE	
CATEGORY	A	B	C	D	E
LPV DA **	419/24		200 (200-½)		
LNAV/VNAV DA	530/24		311 (400-½)		
LNAV MDA	600/24	381 (400-½)		600/35 381 (400-¾)	
CIRCLING	700-1	479 (500-1)	800-1½ 579 (600-1½)	860-2 639 (700-2)	860-2¼ 639 (700-2¼)



SE-4, 28 NOV 2024 to 26 DEC 2024

SE-4, 28 NOV 2024 to 26 DEC 2024