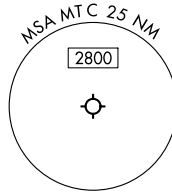


**TOP ALTITUDE:
ASSIGNED BY ATC**

RNAV 1 - DME/DME/IRU or GPS.

RADAR required.



- SELFRIDGE DEP CON★
119.6 391.9
- ATIS
125.325 270.1
- CLNC DEL
128.3 275.8
- GND CON
128.3 275.8
- SELFRIDGE TOWER★
120.15 225.4

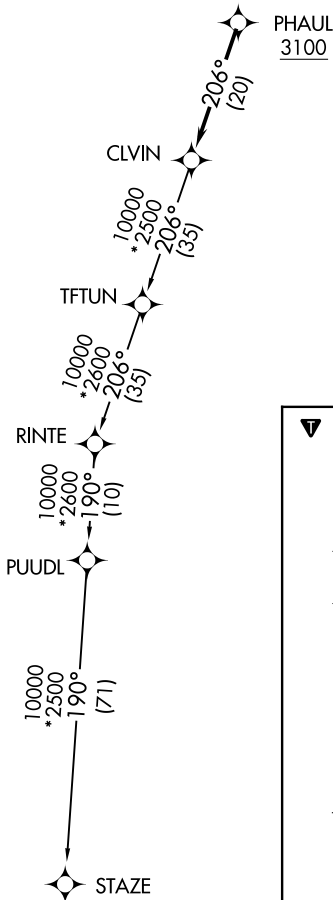


TAKEOFF MINIMUMS:

- Rwy 1: Standard.
- Rwy 19: Standard with minimum climb of 235' per NM to 1500.

NOTE: Turbojet departures at/above 10000, maintain 280K until advised by ATC.

NOTE: Chart not to scale.



DEPARTURE ROUTE DESCRIPTION

TAKEOFF RUNWAY 1: Climb on heading 007° or as assigned by ATC, thence....

TAKEOFF RUNWAY 19: Climb on heading 187° or as assigned by ATC, thence....

....for RADAR vectors to cross PHAUL at or above 3100, then on track 206° to CLVIN, then on (transition). Maintain ATC assigned altitude, expect filed altitude 10 minutes after departure.

STAZE TRANSITION (CLVIN3.STAZE):

EC-1, 28 NOV 2024 to 26 DEC 2024

EC-1, 28 NOV 2024 to 26 DEC 2024