

# HI-TACAN RWY 1

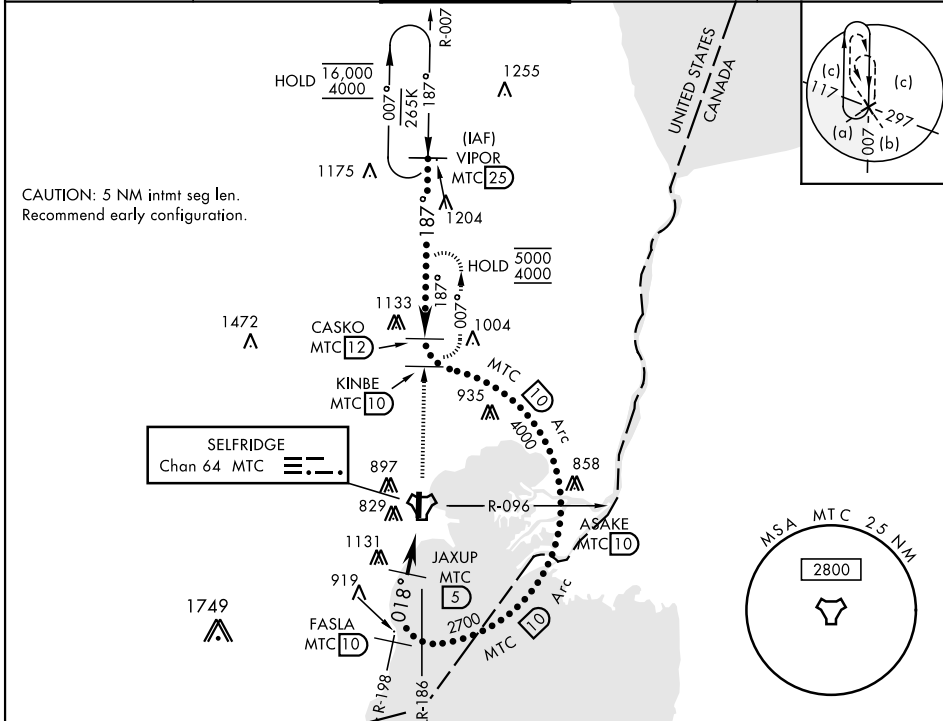
TACAN MTC Chan <b>64</b>	APCH CRS <b>018°</b>	Rwy ldg THRE <b>579</b> Arprt Elev <b>580</b>	AL-276 [USAF]	SELFRIEDGE ANGB (KMTC)
-----------------------------	-------------------------	---	---------------	------------------------

▼ \* When ALS inop, increase vis to 1½ miles.  
 \*\* Circling not authorized W of Rwy 01-19.

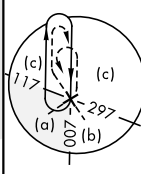


MISSED APPROACH: Climb to 4000 on MTC R-007 to CASKO and hold, continue climb-in-hold to 4000.

ATIS <b>125.325 270.1</b>	APP CON <b>119.6 318.2</b>	TOWER ★ <b>120.15 (CTAF) 0 225.4</b>	GND CON <b>128.3 275.8</b>	CLNC DEL <b>128.3 275.8</b>
------------------------------	-------------------------------	---	-------------------------------	--------------------------------



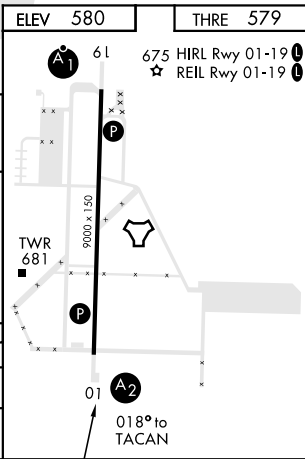
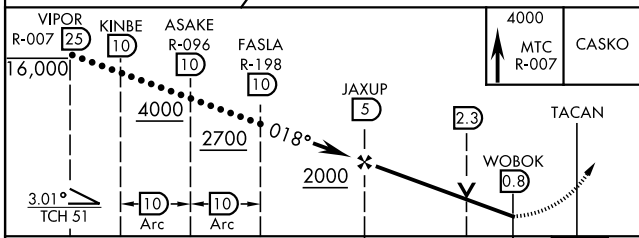
CAUTION: 5 NM intmt seg len. Recommend early configuration.



EC-1, 28 NOV 2024 to 26 DEC 2024

EC-1, 28 NOV 2024 to 26 DEC 2024

ELEV 580	THRE 579
----------	----------



CATEGORY	C	D	E
S-1*	1120-1½	541 (600-1½)	
CIRCLING **	1120-1½ 541 (600-1½)	1140-2	561 (600-2)

# HI-TACAN RWY 1

