

MT. CLEMENS, MICHIGAN

ILS or LOC/DME RWY 19

LOC I-MTC 110.1	APCH CRS 187°	Rwy Ldg THRE Arpt Elev 9000 579 580
---------------------------	-------------------------	---

AL-276 [USAF]

SELFRIDGE ANGB (KMTC)

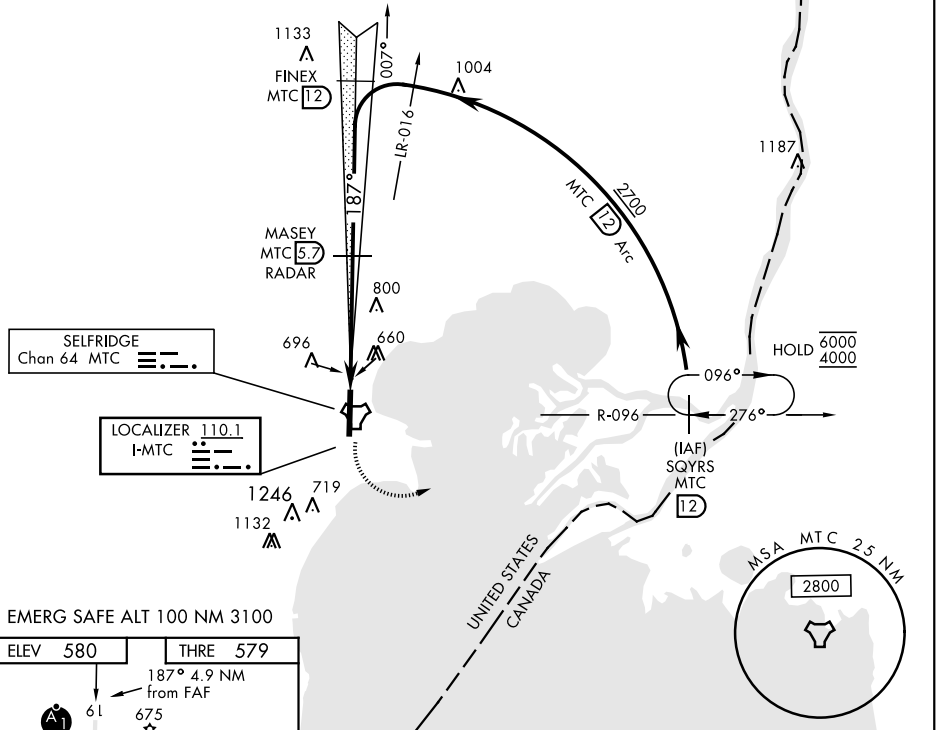
▼ * When ALS inop, increase RVR to 55, vis to 1 mile.
 ** When ALS inop, increase CAT AB RVR to 55, vis to 1 mile, CAT CDE vis to 1½ miles.



MISSED APPROACH: Climbing left turn to 4000, intercept MTC R-096 to SQYRS and hold, continue climb-in-hold to 4000.

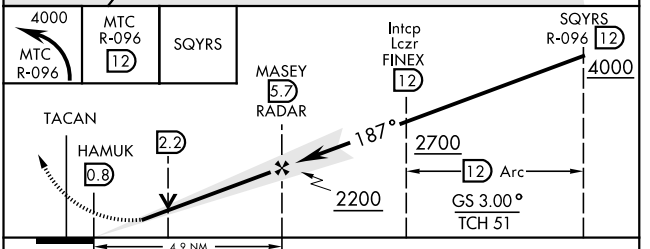
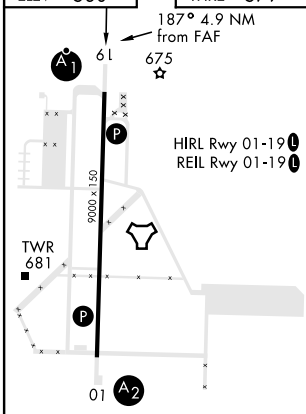
ATIS 125.325 270.1	SELFRIDGE APP CON 119.6 318.2	SELFRIDGE TOWER ★ 120.15 (CTAF) 0 225.4	GND CON 128.3 275.8	CLNC DEL 128.3 275.8
------------------------------	---	---	-------------------------------	--------------------------------

*** Circling not authorized W of Rwy 01-19.



EMERG SAFE ALT 100 NM 3100

ELEV 580	THRE 579
----------	----------



CATEGORY	A	B	C	D	E
S-ILS 19*	923/40		344	(400-¾)	
S-LOC 19**	1080/40	501 (600-¾)	1080/55	501 (600-1)	
CIRCLING ***	1120-1	541 (600-1)	1120-1½ 541 (600-1½)	1140-2	561 (600-2)

FAF to MAP 4.9 NM					
Knots	60	90	120	150	180
Min:Sec	4:54	3:16	2:27	1:58	1:38

MT. CLEMENS, MICHIGAN

42° 37' N-82° 50' W

SELFRIDGE ANGB (KMTC)

Amtd 3 23AUG12

ILS or LOC/DME RWY 19

EC-1, 28 NOV 2024 to 26 DEC 2024

EC-1, 28 NOV 2024 to 26 DEC 2024