

MT. CLEMENS, MICHIGAN

# RNAV (GPS) RWY 1

APCH CRS	Rwy Idg	9000
007°	TDZE	580
	Arprt Elev	580

AL-276 (USAF)

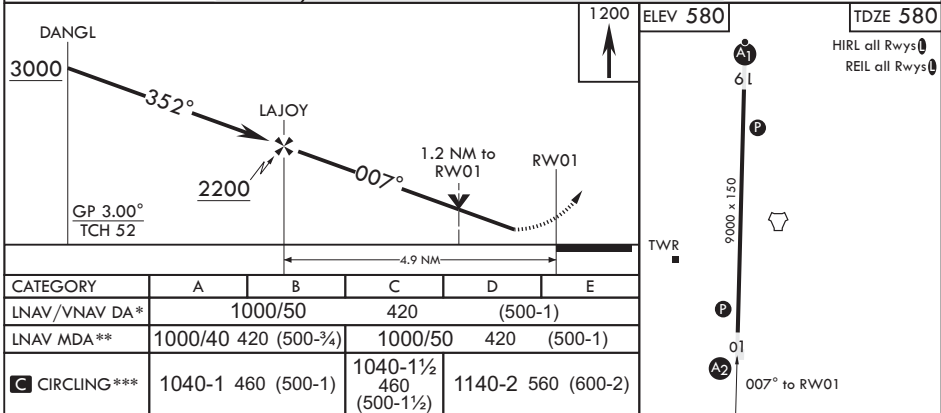
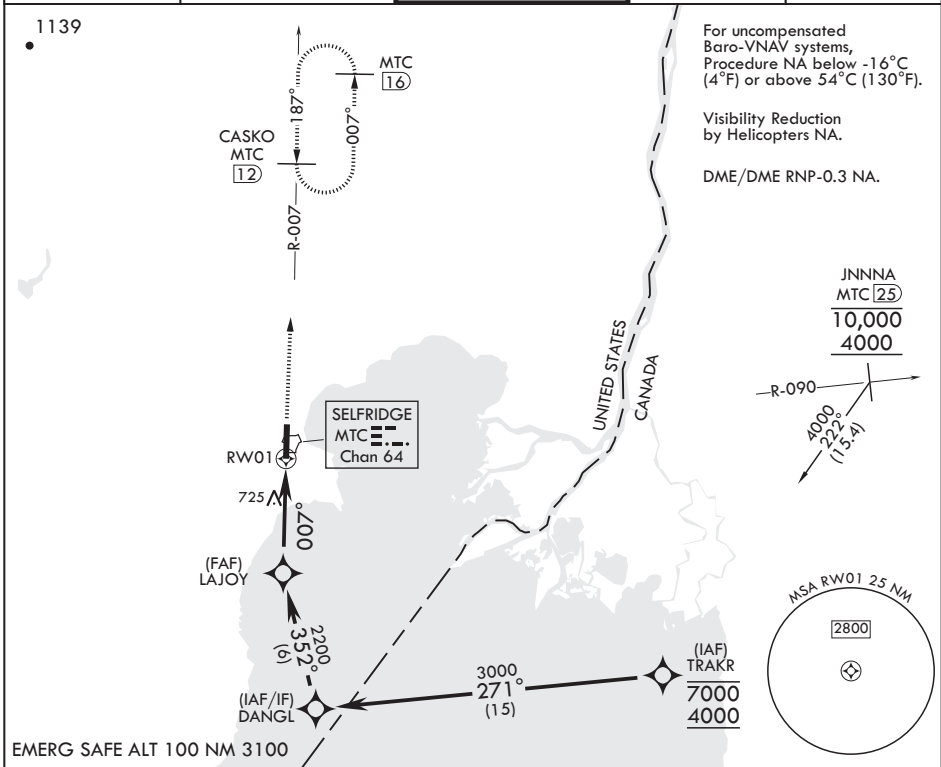
SELFRIDGE ANGB (KMTC)

**V** \* When ALS inop increase RVR to 60, vis to 1 1/8 miles.  
 \*\* When ALS inop increase CAT AB RVR to 55, vis to 1 mile;  
 CAT CDE RVR to 60, vis to 1 1/8 miles.  
 \*\*\* Circling not authorized W of Rwy 01-19.



**MISSED APPROACH:** Climb to 1200 then climbing right turn to 4000 direct CASKO (MTC TACAN R-007/12 DME) and hold, continue climb-in-hold to 4000.

ATIS <b>125.325 270.1</b>	APP CON/DEP CON <b>119.6 318.2</b>	TOWER* <b>120.15 (CTAF) 0 225.4</b>	GND CON <b>128.3 275.8</b>	CLNC DEL <b>128.3 275.8</b>
------------------------------	---------------------------------------	--	-------------------------------	--------------------------------



MT. CLEMENS, MICHIGAN

42°37'N - 82°50'W

SELFRIDGE ANGB (KMTC)

Orig 20MAY21

# RNAV (GPS) RWY 1

EC-1, 28 NOV 2024 to 26 DEC 2024

EC-1, 28 NOV 2024 to 26 DEC 2024